

# Geometric Correction Box Wired LAN

Version 1.00

Keep this manual in a safe place future reference.

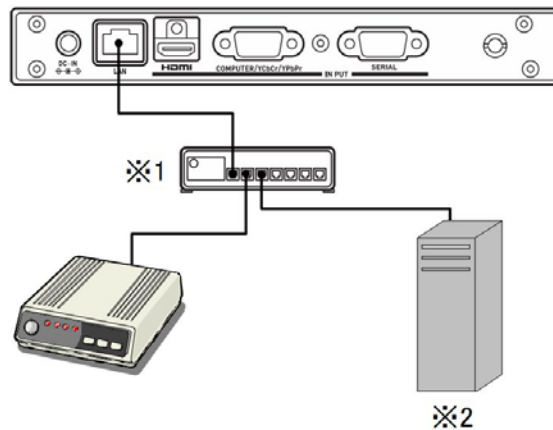
- Crestron is a registered trademark of Crestron Electronics, Inc. of the United States.
- Other company and product names may be registered product names or trademarks of their respective owners.

- The contents of this manual are subject to change without notice.
- This manual is published under strict quality control standards. Should you notice any errors or other problems, please feel free to contact us about them.
- Copying of this manual, either in part or its entirety is forbidden. You are allowed to use these instructions for your own personal use. Any other use is forbidden without the permission of CASIO COMPUTER CO., LTD.
- CASIO COMPUTER CO., LTD. shall not be held liable for any lost profits or claims from third parties arising out of the use of this product or this manual.
- CASIO COMPUTER CO., LTD. shall not be held liable for any loss or lost profits due to loss of data due to malfunction or maintenance of this product, or any other reason.
- The sample screens shown in this manual are for illustrative purposes only, and may not be exactly the same as the screens actually produced by the product.
- Unless specifically stated otherwise, all illustrations in this manual show the YA-S10 projector.

The YA-S10 Geometric Correction Box ("Control Box") can be controlled from an external device via its LAN port.

## Connection

Connect the LAN port of the Control Box to the LAN hub to which the device to be linked to via wired LAN is connected. If this is the first time you are connecting the Control Box to a LAN (or immediately after executing the Control Box's "Initialize Wired LAN Settings" command), connect to a LAN that includes a device with a DHCP server function and configure wired LAN settings. For more information, refer to "Using a Computer to Configure Control Box LAN Settings" in the User's Guide.



\*1 LAN hub

\*2 Device with a DHCP server function

In a configuration like the one in the illustration above, you should normally use straight type LAN cables.

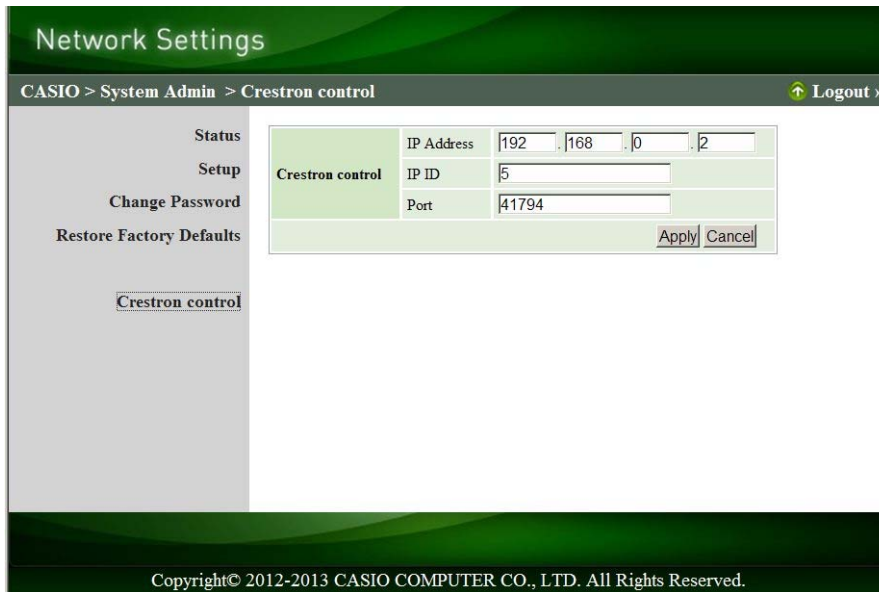
## Supported Devices and Standards

### Crestron

This Control Box supports Crestron Electronics controller and software (RoomView®) commands. For detailed information and information about downloading RoomView®, visit the website below.

URL <http://www.crestron.com/roomviewconnected/>

When using the Crestron controller, the controller IP address and other settings must be configured on the Control Box. Settings are configured on the Crestron Control page shown below, which appears when you click [Crestron Control] on the System Admin page.



- IP address                Specifies the controller IP address.
- IP ID                     Specifies the controller IP ID.
- Port                      Specifies the number of the port being used. (Always 41794)

Enter the applicable information for each item and then click the [Apply] button. This will restart the network function and apply the new settings.

## Caution

- The Control Box can be configured to enable or disable power via wired LAN on from the standby state. To do so, use [Wired LAN Settings]-[Remote On] on the Control Box's Setup Menu.

**Enable** : Power on enabled.

**Disable** : Power on disabled. (Default)

Initializing network settings or performing a "Restore All Defaults" operation with the Setup Menu will cause this setting to change to "Disable". If you are operating the Control Box using a wired LAN setting, be sure to change this setting back to "Enable" after initialization.

**CASIO®**

**CASIO COMPUTER CO.,LTD.**  
6-2, Hon-machi 1-chome  
Shibuya-ku, Tokyo 151-8543, Japan

NGX130419E-A