

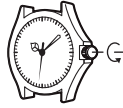
Operation Guide ANA(3H3E-2)

CASIO®

- Your watch may differ somewhat from the one shown in the illustration.

Notes

- Some water resistant models are equipped with a screw lock crown.
- With such models, you must unscrew the crown in the direction noted in the illustration to loosen it before you can pull it out. Do not pull too forcibly on such crowns.
- Also note that such watches are not water resistant while their crowns are loosened. Be sure to screw the crowns back in as far as they will go after making any setting.

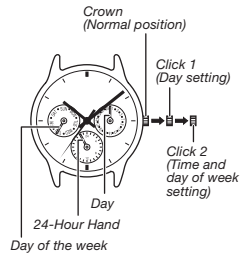


Setting the Time and Day

To set the day

- Pull the crown out to Click 1.
- Rotate the crown to set the day.
Avoid changing the day setting between 9:00 p.m. and 1:00 a.m. (If you do, the day indication may not change at midnight).
- Push the crown back in to the normal position.

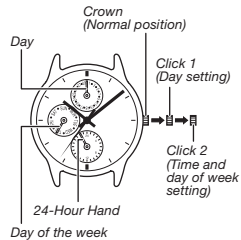
Module 1343/2364/5071/5316



To set the day of the week and time

- Pull the crown out to Click 2 when the second hand is at 12 o'clock. The second hand will stop.
- Set the hands by rotating the crown. As you do, the day of the week changes accordingly.
- After setting the day of the week, rotate the crown to set the time. Make sure to distinguish between AM and PM.
- On a time signal, push the crown back in to the normal position.

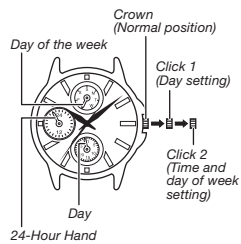
Module 1794/5072



24-Hour Hand

The 24-Hour Hand indicates the current hour of the day. It makes one complete rotation every 24 hours.

Module 5224



- For watch with the elapsed time bezel
Rotate the elapsed time bezel to align the ∇ mark with the minute hand.
After certain amount of time elapsed, read the graduation on the elapsed time bezel which the minute hand points to.
The elapsed time is indicated.



Elapsed time bezel

Specifications

Module No.	Accuracy at normal temperature	Battery type	Battery life
1343/5316	±20 seconds per month	SR916SW	Approx. 3 years
1794/2364	±20 seconds per month	SR621SW	Approx. 2 years
5071/5072	±20 seconds per month	SR621SW	Approx. 3 years
5224	±20 seconds per month	SR920SW	Approx. 3 years