
CASIO

XW-J1

Windows Setting GUIDE

Windows Driver Installation

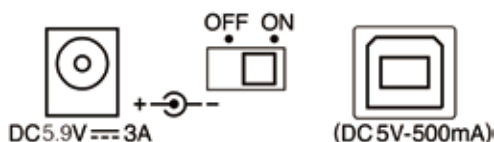
■NOTE

FOR WINDOWS ONLY. Macintosh computers do not require driver installation

Disable anti-virus software during the installation.

■How to install the driver

1. Connect the XW-J1 to the computer and turn ON the power switch.
 - Connect the included AC adaptor (AD-59300S) to the power socket located on the rear panel of XW-J1.
 - Connect the XW-J1 to your computer with a USB cable and set the power switch of the XW-J1 to ON.



2. Download "Casio_XW-J1_Driver_v167" from Casio Web site to your computer.

Double click "Casio_XW-J1_Driver_v167" to start the installation.



3. Click Next



4. The license agreement page will appear, click "I Agree".



5. This driver will be installed to a default location on your computer.

Click Next.
(or "Browse" if you want to change the location)



6. Driver installation will begin. (This may take some time.)



7. Once installation has completed, click "Finish".

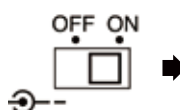


8. Reboot the XW-J1 and check the device is recognised by the computer.

Start up on Windows

9. Please double check if the power adaptor and USB cable connect to the power socket located and USB cable on the rear panel of the XW-J1.

10. Turn ON the power switch of the XW-J1 on the rear panel of the XW-J1.



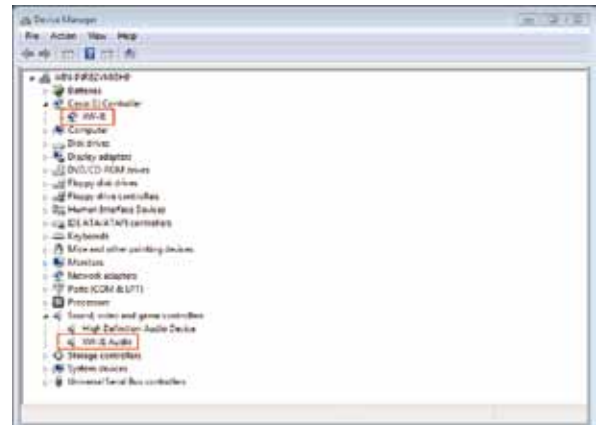
■NOTE

Before starting the DJ software, please check if PC recognized XW-J1 device after turning on the XW-J1 power.

How to check the XW-J1 device recognition on your Computer

■ Windows

- Go to "Control Panel" > "Device Manager"
- Check whether the following devices recognised.
- "Sound, video and game controllers" / "XW-J1 Audio"
- "Casio DJ Controller" / "XW-J1"



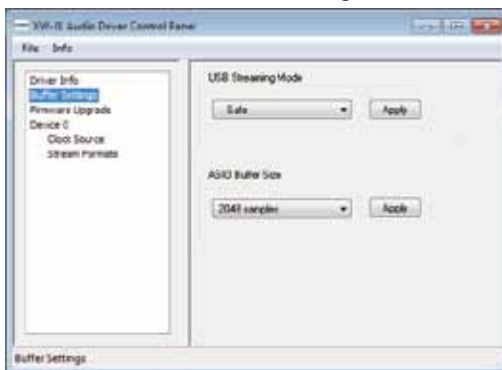
【Supplemental information of the Casio XW-J1 driver's control panel】

The Casio XW-J1 driver will automatically create a driver control panel for the XW-J1 in your computer when installation is completed.

"Start" > "All programs" > "Casio" > "XW-J1" > "XW-J1 Control Panel"

※The Casio XW-J1 control panel can also be launched from your Windows task bar.

■ Precautions for Buffer Settings



- Quit all applications when changing the USB Streaming Mode
- The message below may appear when changing the ASIO Buffer Size. This means the buffer size is set too small for the sample rate, USB streaming mode and your computers specifications. Select a larger ASIO Buffer Size or larger USB streaming mode to avoid distortions.

※Minimum Latency < Low Latency < Standard < Relaxed < Safe < Extra



TROUBLE SHOOTING

Problem	Possible solutions
The power does not turn on.	Check the connection of the bundled power adaptor. (If you are using an extension cable, make sure it's connected to the power socket.)
	Check if the power switch is turned ON.
	Check if the USB cable is connected correctly.
	If you are using a USB hub, try connecting directly to your computer.
My computer doesn't recognise controller.	Check if your computer fulfills the minimum system requirements.
	Connect the USB cable to another USB port. (Certain USB ports may have connection errors.)
	If you are using a USB hub, try connecting directly to your computer. Also try connecting to all USB ports.
	Try changing the USB cable. Using a faulty USB cable can cause communication errors.
	Start the software after connecting the XW-J1 and turning the power ON. (Orders of starting the software can affect USB recognition.)
	Quit all other running applications including anti-virus software. Also turn off WiFi and Bluetooth connections.
The JOG WHEELS do not operate	Drivers of web cameras, game controllers and other devices can prevent your computer recognising the XW-J1. Stop or remove such drivers.
	Clean up your MIDI driver registry. This can be tricky and we strongly recommend referring to the Microsoft support page before editing or deleting anything.
	Check if the bundled audio driver is installed on your computer. (For Windows only, Macintosh computers do not require driver installation.)
The JOG WHEELS do not operate	The sensor setting may possibly be too low. Adjust the sensor knobs located on the rear panel of the XW-J1.
	The adjustment point can differ between the left and right jog wheels.
My controller does not sync with the software	Check the MIDI and Audio setup of the software. Ensure the XW-J1 is selected for use.
	Connect the USB cable to another USB port. (Certain USB ports may have connection errors.)
	Connect the USB cable to another USB port. (Certain USB ports may have connection errors.)
	Check if your computer fulfills the minimum system requirements for the XW-J1.
There is no sound	Check that all volume controls are turned up (Input faders, trim, master). Also check the volume setting of your stereo and speakers.
	Check that the MASTER OUT connector is plugged into your stereo or speakers.
	Check that the bundled audio driver is installed on your computer. (For Windows only, Macintosh computers do not require driver installation.)
	The sensor setting may possibly be too high. Adjust the sensor knobs located on the rear panel of the XW-J1. The adjustment point can differ between the left and right jog wheels.
I can't hear anything from my headphones	Check that the HEADPHONE LEVEL knob located on the front panel is turned up. Also check that the monitor cue buttons (buttons with headphone marks located above the input faders) are selected.
	Check the audio settings of the software. If the software has monitor / headphone control, check that the level is turned up.
The sound is distorted or noisy	Increase the audio buffer size of the software to check if that improves sound quality.
	Check if your computer fulfills the minimum system requirements for the XW-J1. Noise / drop-outs / distortions can occur due to poor computer performance.
	Check that the virtual audio output of your software is not overloaded. If it is, decrease it using the Trim and Master knobs on the controller, or on the virtual knobs in the software.
I can't install the included audio driver	Installation may fail when other application are running. Please close all running applications.
	If you have anti-virus software installed on your computer, please disable it while the driver is being installed.
	Check that you are logged in as Administrator and have full access permissions.
The crossfader doesn't cut	The crossfader function may be disabled in software. Please check your software settings.
The sound change is too sudden when moving the crossfader	Adjusting the crossfader curve setting in your software.

※ The XW-J1 does not support computers that do not meet required minimum system specifications.

※ Here's a few tips to enable stable operation with your computer and the XW-J1.

- Quit all other applications
- Quit all resident software (such like virus busters)
- Turn WiFi off
- Stop drivers of other devices

Deckadance DJ software(DEMO) Installation



You can download Deckadance Trial version from Image-line website as below link.

<http://www.image-line.com/documents/deckadance.html>

- Open the installation file



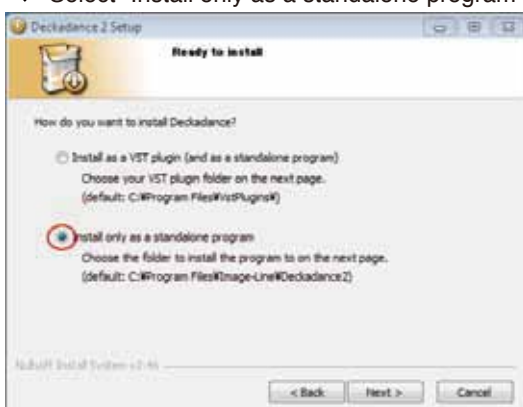
- ↓ The license agreement page. Click "I Agree".



- ↓ Un select "Asio 4All" .



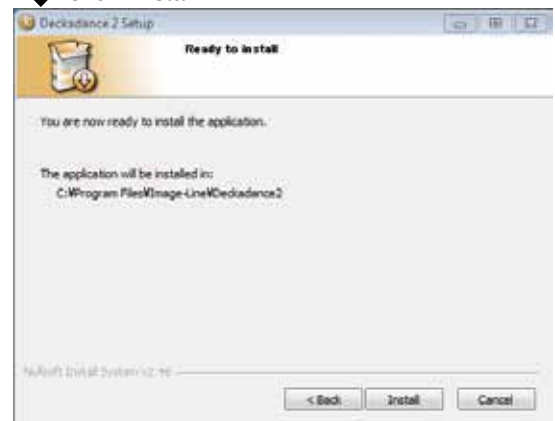
- ↓ Select "Install only as a standalone program"



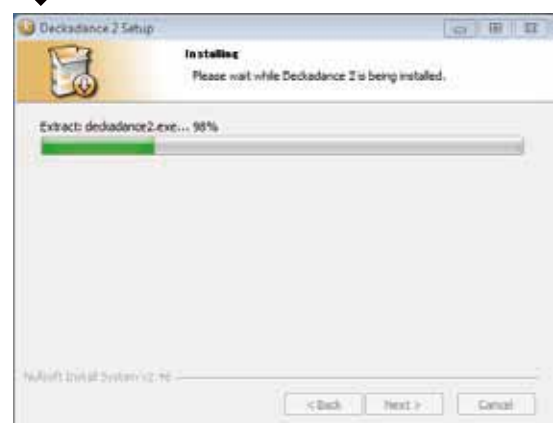
- ↓ Click "Next" .



- ↓ Click "Install" .



- ↓ Wait while.



- ↓ Click "Finish" .

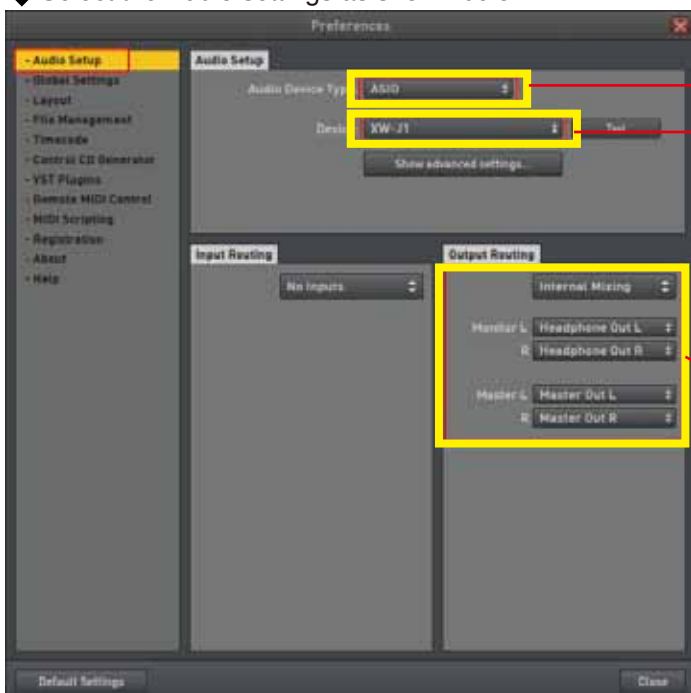


Deckadance DJ software(DEMO) How to setup (AUDIO)

↓ Click the “Preferences” icon.



↓ Select the Audio settings as shown below.



Please check that the Audio Setup and Routing options are configured as below:

[Audio Setup]
- Audio Device Type : “ASIO”
- Device : “XW-J1”

[Output Routing] : “Internal Mixing”
- Monitor L : “Headphone Out L”
- Monitor R : “Headphone Out R”
- Master L : “Master Out L”
- Master R : “Master Out R”

Deckadance DJ software(DEMO) How to setup (MIDI)

Newer versions of Deckadance2 (2.25 and above)

It is recommended to download the latest version of Deckadance2 from their website. Then, XW-J1 can be selected from the Remote MIDI Control in the Preferences screen. Make sure that the "Casio MIDI In" button under the "MIDI Inputs / Outputs menu" is set to "ON" .



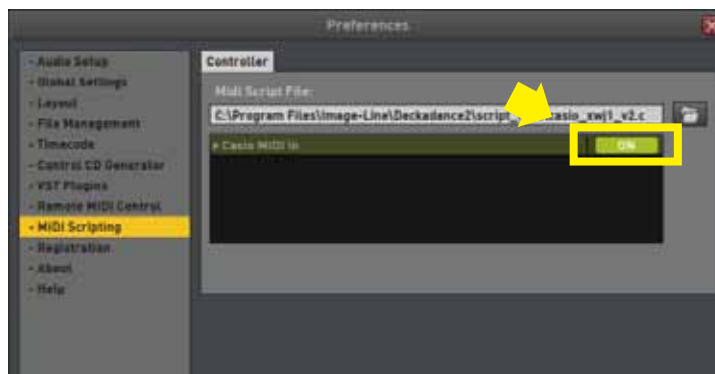
Older versions of Deckadance2 (2.24 and below)

If you have already installed an older version of Deckadance2, please follow the steps below.

1. Select "Generic Controller" from the Remote MIDI Control tab in the Preferences menu.



2. From the MIDI Scripting tab in the Preferences menu, make sure that the "Casio MIDI In" button under the "MIDI Inputs / Outputs menu" is set to "ON" .



3. Copy the files

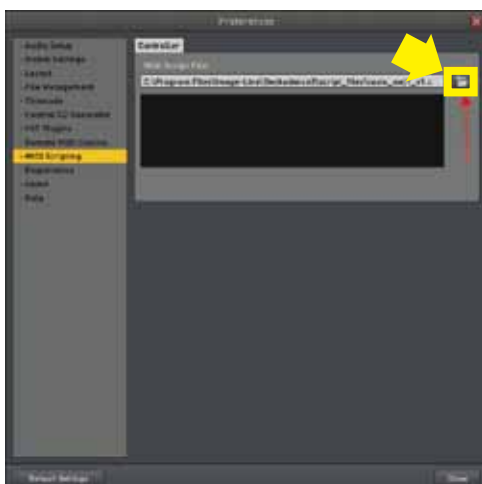
"casio_xwj1_v2.c" and "dd_commands.h"
to the folder C:\Program Files\Image-Line\Deckadance2\script_files :



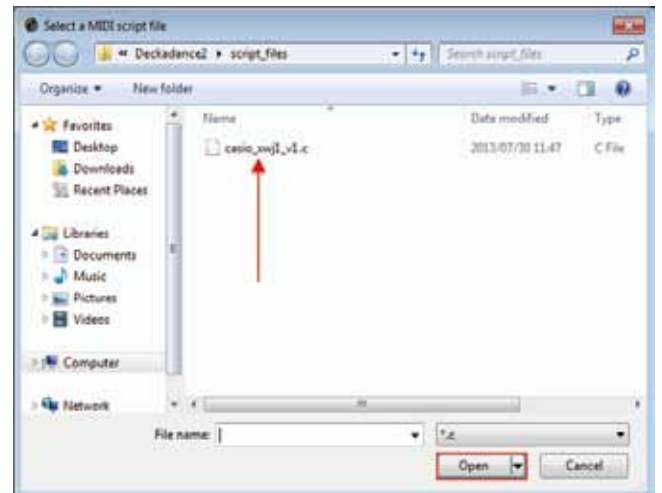
4. Open the Deckadance application. Click the Preferences icon on the top of the screen:



5. Click the "MIDI Scripting" menu from the left hand side. Click the folder icon:



6. Select the "casio_xwj1_v2.c" file and click "Open".



7. Check that the script file shown here is

"C:\Program Files\Image-Line\Deckadance2\script_files\casio_xwj1_v2.c" :

