

Music Data Management Software Data Manager for CT-X

User's Guide

Use this manual in combination with the
User's Guide that comes with the Instrument.

Contents

Introduction	4
What is Data Manager?	4
Minimum Computer Operating Environment	4
Use of This Software	4
Getting Ready, Starting Up, Shutting Down	5
Getting Ready.....	5
Starting Up Data Manager	5
Exiting Data Manager	6
Transfer Mode.....	7
What you can do in this mode.....	7
Important!	7
Data Manager Window (Transfer Tab)	7
Using the Transfer Tab.....	9
Preference Mode	11
What you can do in this mode.....	11
Screen Content	11
Using the Preference Mode.....	12
Other Operations	13
Using a USB Flash Drive to Transfer Data between the Instrument and a Computer	13
Important!	13
Copying Files in the User Data File Folder to a USB Flash Drive	13
Copying a File from a Folder on Your Computer to the User Data File Folder	13

User Data Reference	14
Rhythm Data Notes.....	14
Error Messages	15

Introduction

What is Data Manager?

Data Manager is application software that lets you perform the following operations on your computer.

- Save Instrument* user data on your computer.
- Transfer user data files from your computer to the Instrument.

* The term “Instrument” in this manual refers to one of the CASIO electronic musical instruments included in Supported Models. For details, visit the website at the URL below.

<http://world.casio.com/>

IMPORTANT!

- **Do not use any other applications, disconnect your computer’s USB cable, remove your computer’s USB flash drive, or turn any peripheral connected to your computer on or off while Data Manager is running. Doing so not only will cause Data Manager to operate abnormally, it also can corrupt data and cause malfunction of the Instrument and/or your computer.**

Minimum Computer Operating Environment

■ Supported Operating Systems

For the latest news about supported operating systems, visit the website at the URL below.

<http://world.casio.com/>

IMPORTANT!

- **The above minimum computer operating environment does not guarantee proper operation of this software.**

Use of This Software

- All rights to the software (this Software) revert to CASIO COMPUTER CO., LTD.
- Distribution of any version of this Software created by altering the structure, content, or any other aspect of the original Software is prohibited.
- This Software is provided “as is,” and CASIO makes no express warranty concerning the suitability of the Software functions for any particular purpose. NOTE THAT IN NO EVENT SHALL CASIO BE LIABLE FOR ANY DAMAGES WHATSOEVER (INCLUDING, WITHOUT LIMITATION, DAMAGES FOR LOSS OF PROFITS, BUSINESS INTERRUPTION, LOSS OF INFORMATION) ARISING OUT OF THE USE OF OR INABILITY TO USE THIS SOFTWARE, EVEN IF CASIO HAS BEEN ADVISED OF THE POSSIBILITY OF SUCH DAMAGES.
- You are granted the right to use this Software free of charge. You are also granted the right to distribute this Software freely, as long as such distribution is not for profit.
- Note that CASIO will not provide any support for this Software or its functions.
- The contents of this Software are subject to change without notice.
- The screen shots shown in this manual may differ from the screen contents produced by your computer.
- Except as authorized under GNU LESSER GENERAL PUBLIC LICENSE Version 2.1 (LGPL), you are not allowed to modify this Software without permission from CASIO.
- This Software uses the LGPL version Qt Library, and performs operations by dynamically linking to the Qt library. You can obtain the Qt library from <http://qt.nokia.com>.
- For the full text of the LGPL, see the LGPL.txt file that is included with the files distributed with this Software.

Getting Ready, Starting Up, Shutting Down

Getting Ready

Windows Users

- 1. Download the Data Manager software file from the CASIO website to your computer.**
- 2. Uncompress the file.**

This will create a folder named "CASIO DataManager for CT-X" on your computer.

Mac Users

- 1. Download the Data Manager software file from the CASIO website to your computer.**
- 2. Open the file.**

This will create an image named "CASIO DataManager for CT-X".

Copy "DataManagerCTX" to your application folder.

Starting Up Data Manager

Windows Users

- 1. On the Instrument, select the rhythm mode.**
- 2. Quit all other applications running on your computer.**
- 3. Open the folder named "CASIO DataManager for CT-X".**
- 4. Double-click "DataManagerCTX.exe".**

Data transfer cannot be performed when the Instrument is in any mode besides the rhythm mode.

Data Manager will not run correctly if any other application is running on your computer.

This will start up Data Manager.

Mac Users

- 1. On the Instrument, select the rhythm mode.**
- 2. Quit all other applications running on your computer.**
- 3. In the application folder, double-click "DataManagerCTX".**

Data transfer cannot be performed when the Instrument is in any mode besides the rhythm mode.

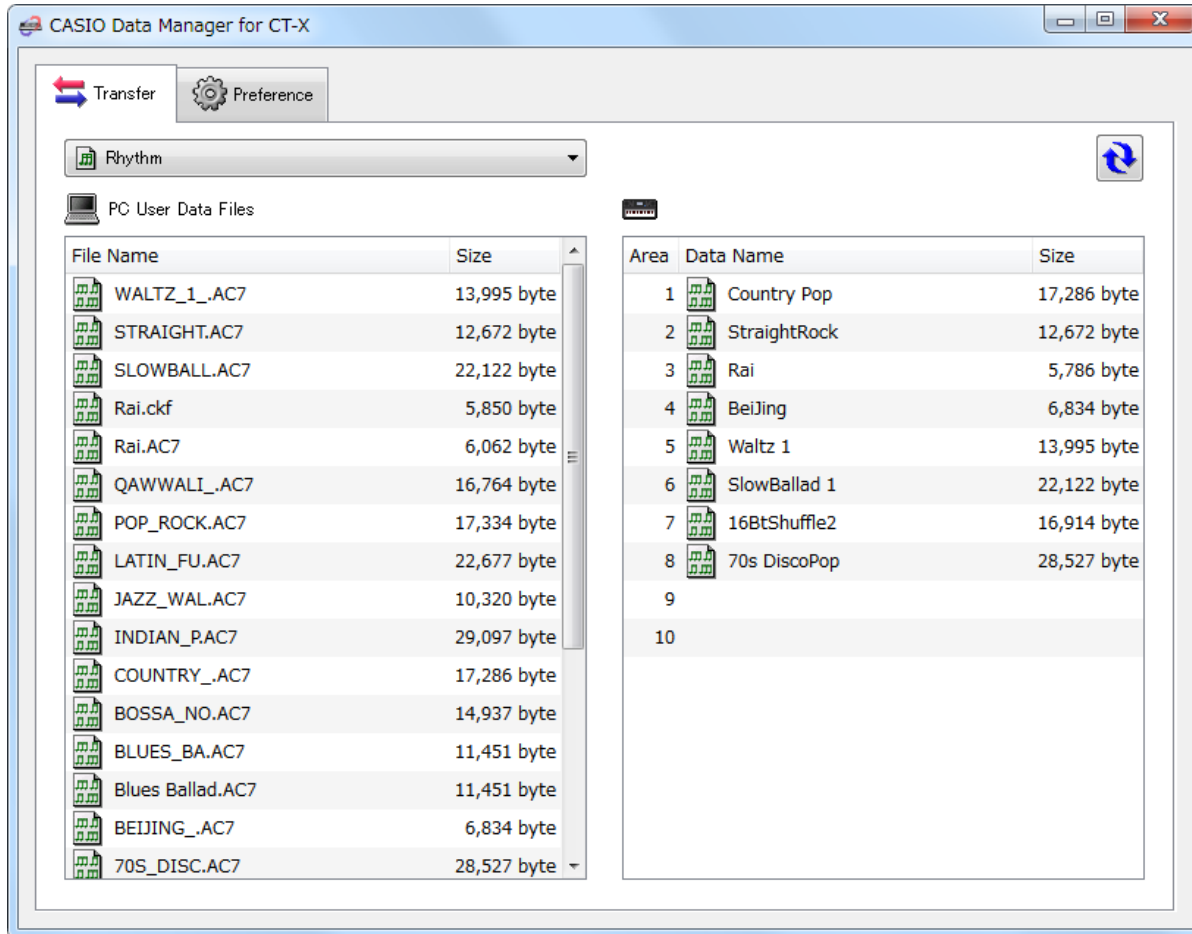
Data Manager will not run correctly if any other application is running on your computer.

This will start up Data Manager.

Screen Following Startup

Starting up Data Manager will display a screen like the one shown below. Click a tab to select the mode you want. For details about each mode, see the sections of this manual that cover them.

- Examples show Windows 7 screen shots.



Exiting Data Manager

Click the close (x) button in the title bar of the Data Manager window.

- A confirmation dialog box will appear if you try to exit Data Manager while it is transferring data or performing some other process. Click the [Yes] button to terminate the process and exit Data Manager. The effect of terminating an ongoing process depends on the type of process being performed. See the explanation of each mode in this manual for full details.

Transfer Mode

What you can do in this mode...

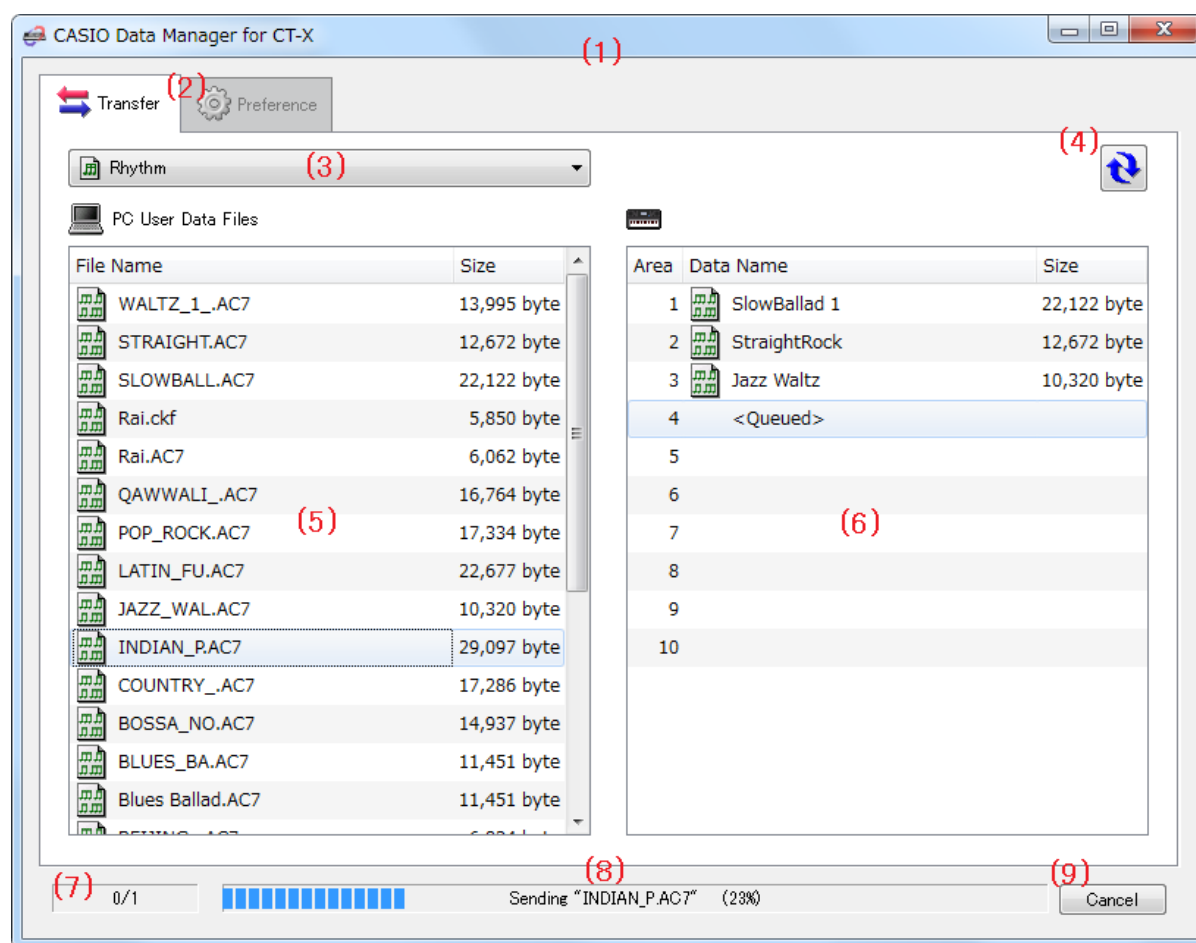
- Save user data you created on the Instrument to your computer.
- Transfer user data files from your computer to the Instrument.

Important!

- Your computer must be connected to the Instrument with a USB cable to use the functions in the transfer mode.
- See the Instrument's User's Guide for details about how to connect to a computer.
- Data Manager will not operate correctly if multiple Instruments are connected to your computer.
- Do not perform any operation on the Instrument while transferring Instrument data in the transfer mode. Doing so can cause operation problems with Data Manager and/or the Instrument, and can corrupt data in Instrument memory.

Data Manager Window (Transfer Tab)

- Examples show Windows 7 screen shots.



(1) Title bar

Click the close (x) button on the right end of the title bar to exit Data Manager. “<Disconnected>” is displayed in the title bar when there is no connection between the computer and Instrument.

(2) Mode tabs

Select the tab for the mode you want to use. For details about each mode, see the sections of this manual that cover them.

(3) Data type selection box

Selects the target data type for the mode you are in. The files and data that appear on the “(5) Computer file list” and “(6) Instrument data list” change in accordance with the data type you select here. The available data types depend on the connected Instrument model. For details, see the page 14.

(4) Reload button

Refreshes “(5) Computer file list” and “(6) Instrument data list” contents. Note that in the transfer mode, Data Manager does not refresh the lists automatically when you change user data by performing an operation on the Instrument, or when you perform a user data file folder (page 11) operation on your computer without using Data Manager. After performing such operations, click the reload button to refresh the lists.

(5) Computer file list

Lists data stored in the computer user data folder (page 11).

(6) Instrument data list

Lists user data stored in Instrument memory.

(7) All process progress bar

Shows how many processes have been completed out of the total number of processes being performed. This bar is displayed while processes are being performed.

(8) Individual process progress bar

Shows the progress of the current process. This bar is displayed while a process is being performed.

(9) Cancel button

Cancels an ongoing data transfer process. This button is displayed while a process is being performed.

Using the Transfer Tab

Transferring Data from the Instrument to a Computer

1. Use the “(3) Data type selection box” to select the type of data you want to transfer.
2. In the “(6) Instrument data list”, find the data you want to transfer.
3. Drag the data you want to transfer from the “(6) Instrument data list” and drop it*¹ into the “(5) Computer file list”.

The files you drag and drop are placed in a queue, and transferred one-by-one. The saved file appears in the “(5) Computer file list” as each process is completed.

IMPORTANT!

- The displayed size of a transferred file in the “(5) Computer file list” may be different from the displayed size of the same file in the “(6) Instrument data list”.

*¹ “Drag-and-drop” is a computer mouse operation for moving files and data from one location to another. Move the mouse pointer to the icon of the file or data you want to move and then hold down the mouse button. Keeping the mouse button depressed, move the mouse cursor to the destination of the move (“dragging” the file along with it) and then release the mouse button to “drop” the file or data into the new location.

Transferring User Data from a Computer to the Instrument

1. Use the “(3) Data type selection box” to select the type of data you want to transfer.
2. In the “(5) Computer file list”, find the data you want to transfer.
3. In the “(6) Instrument data list”, find the area to which you want to transfer the data.
4. Drag the data you want to transfer from the “(5) Computer file list” and drop it into the “(6) Instrument data list”.

The files you drag and drop are placed in a queue, and transferred one-by-one. The saved file appears in the “(6) Instrument data list” as each process is completed. If the destination area you select already contains data, a confirmation dialog box will appear before the transfer process is executed. Note that overwriting data causes the previous data to be deleted. Click the [Yes] button to overwrite the existing data with the new data.

IMPORTANT!

- The displayed size of transferred data in the “(6) Instrument data list” may be different from the displayed size of the same data in the “(5) Computer file list”.

Renaming a User Data File on Your Computer

1. In the “(5) Computer file list”, select the file you want to rename and then double-click it.
2. This will change to the file name editing mode. Enter the new name.
3. After you are finished entering a name, press the [Enter] key on your computer keyboard.

IMPORTANT!

- The file name you specify here is not reflected in the file name display on the Instrument screen. Changing the file name displayed by the Instrument is not supported by Data Manager. Use the appropriate Instrument operation to change the display file name. For details about changing the file name displayed by the Instrument, see the Instrument’s User’s Guide.

Canceling a Transfer Process

Click the “(9) Cancel button” while a transfer process is being performed. This will cause a confirmation dialog box to appear. Click the [Yes] button to confirm you want to cancel.

This will cancel the ongoing process and also discard any files in the transfer or delete queue.

IMPORTANT!

- Processes that have already been completed cannot be canceled.
- With some types of data, the “(9) Cancel button” will become dimmed during a data transfer operation, which indicates that the button is disabled. This means that the current operation cannot be canceled part way through.

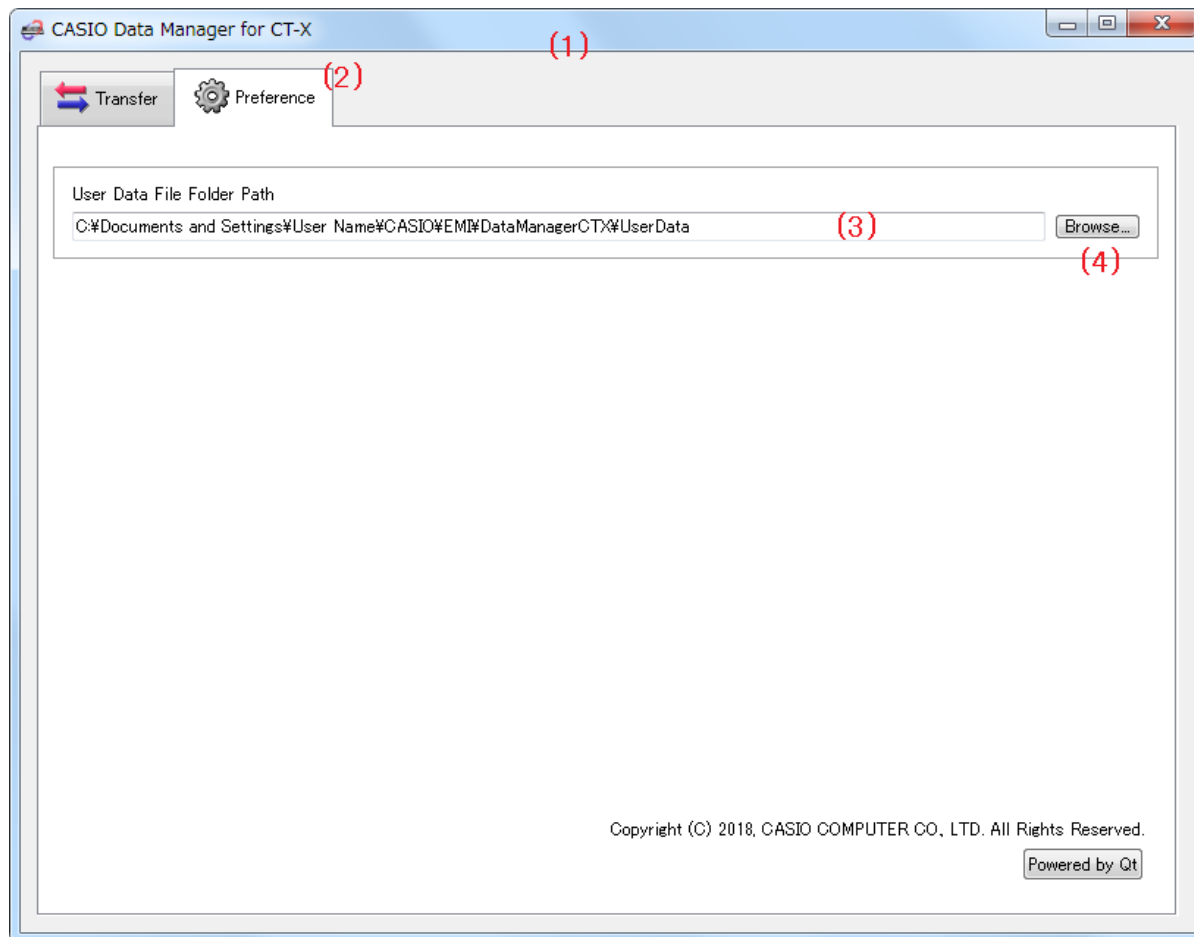
Preference Mode

What you can do in this mode...

View and configure the storage folders for the files used by Data Manager.

Screen Content

- Examples show Windows 7 screen shots.



(1) Title bar

Click the close (x) button on the right end of the title bar to exit Data Manager. “<Disconnected>” is displayed in the title bar when there is no connection between the computer and Instrument.

(2) Mode tabs

Select the tab for the mode you want to use. For details about each mode, see the sections of this manual that cover them.

(3) User data file folder path

Shows the path to the user data file storage folder. The files in this folder are displayed in the computer file list in the transfer mode.

(4) User data file folder path browse button

Displays a dialog box for specifying the path to the user data file storage folder.

Using the Preference Mode

Specifying the User Data Storage Folder

1. Click the “(4) User data file folder path browse button”.
2. On the select folder dialog box that appears, specify the storage folder.

Other Operations

Using a USB Flash Drive to Transfer Data between the Instrument and a Computer

User data files that have been saved to a USB flash drive on the Instrument can be copied to the user data file folder (page 11). This will make the files available to Data Manager. Also, user data files that have been saved from the Instrument to a computer using Data Manager can be copied to a USB flash drive. Then the USB flash drive can be inserted into the Instrument's USB port. This will allow direct access to the files by the Instrument.

Important!

- Use a USB flash drive that has been formatted on the Instrument.
- If a user data file name on the USB flash drive is longer than eight characters (excluding the file name extension), the Instrument will display a different file name. Change the file name so it is no more than eight characters long.
- The Instrument cannot display file name characters other than those shown in the table below. Change the file name so it contains only the allowable characters shown below.

0	1	2	3	4	5	6	7	8	9
A	B	C	D	E	F	G	H	I	J
K	L	M	N	O	P	Q	R	S	T
U	V	W	X	Y	Z	\$	&	_	'
()	-	^	{	}	@	~	`	

- Lower case characters are allowed, but the Instrument does not distinguish between upper case and lower case.

Copying Files in the User Data File Folder to a USB Flash Drive

Files in the user data file folder that appear in the computer file list in each mode can be dragged outside of the Data Manager window. Dragging user the computer file list to the USB flash drive's MUSICDAT folder will copy the file to the USB flash drive.

Copying a File from a Folder on Your Computer to the User Data File Folder








A file in a folder outside of Data Manager can be dragged to the computer file list to copy it to the list. To copy a user data file stored on a USB flash drive by the Instrument to the Data Manager user data file folder (page 11), open the USB flash drive's MUSICDAT file and then drag the file you want to copy to the Data Manager computer file list.

- Note that you will not be able to copy a file if it has a file name extension that is not supported by Data Manager.

User Data Reference

There may be no inter-compatibility between two Instruments with different model names. For details, visit the website at the URL below.

<http://world.casio.com/>

	Icon	File name extension	Data Type	Remarks
Tone		.TON	User Tones	–
Rhythm		.AC7, .Z00, .CKF	User Rhythms	See “Rhythm Data Notes”.
Song		.CMF, .MID, .CM2	Song	–
Lesson Rec Song		.LRF	Song	–
Multi Track Rec Song		.MRF	Song	–
Registration Bank		.RBK	Registration Bank	–
Phrase Set		.PHS	Phrase Set	–

Rhythm Data Notes

- Data Manager can be used to transfer rhythm data files of older models to the Instrument. Supported rhythm data files are those with the following file name extensions: “.AC7”, “.Z00”, “.CKF”.
- Rhythm data files that are larger than approximately 64 Kbytes cannot be transferred to the Instrument.

Error Messages

Operation errors, Instrument status problems, Data Manager operating environment problems, and other factors can cause error messages to appear during operation. Look up the error message in the list below and perform the required action as noted.

Message	Cause	Required Action
Already Running	A different instance of Data Manager is already running.	Use the already running instance of Data Manager.
Communication Error	An error occurred during communication with the Instrument.	<ul style="list-style-type: none"> • Check the connection between the computer and Instrument. • If another application is running, exit it. • On the Instrument, select the rhythm mode. • Make sure there is only one Instrument connected to the computer. • Do not perform any keyboard operations while data communication is in progress. • If you are connected via a USB hub or extension cable, change to a direct connection. • If the above actions do not resolve the problem, try turning the Instrument off and then back on again. Also try restarting Data Manager.
File Read Error	An error occurred during a file or folder read operation.	<ul style="list-style-type: none"> • Check to make sure the file or folder you are trying to read actually exists. • Check to make sure the file or folder you are trying to read is readable. • Check if the file is being used by another application. • Check to make sure that the path to the user data file folder does not contain any illegal characters. • If either path contains illegal characters, change the user data file folder to a folder whose path is made up only of supported single-byte alphanumeric characters.
File Write Error	An error occurred during a file or folder write operation.	<ul style="list-style-type: none"> • Check to make sure the location where you are trying to create the file actually exists. • Check to make sure the file you are trying to write to actually exists. • Check to make sure the file you are trying to write to is writable. • Check if the file is being used by another application. • Check to make sure that available computer or USB flash drive memory space is sufficient. • Check to make sure that the path to the user data file folder does not contain any illegal characters. • If either path contains illegal characters, change the user data file folder to a folder whose path is made up only of supported single-byte alphanumeric characters.

Message	Cause	Required Action
File Format Error	The format of the file is not supported by Data Manager.	The file is not supported by Data Manager. Use a different file.
	The file is corrupted.	The file is unusable. If the same data is still available on the Instrument, re-save the data and use it.
	The file is not compatible with the destination Instrument.	Use a file that is compatible with the destination Instrument. A file that was created on a model that is different from the destination Instrument may not be compatible, even if it has a file name extension that is supported by the destination Instrument. For details, visit the website at the URL below. http://world.casio.com/
File Too Large	Attempting to transfer a user data file to the Instrument that exceeds the maximum supported size.	The file is not supported by the Instrument. Use a different file.
Keyboard Data Is Different	The data on the keyboard may be different from the displayed data.	Click the reload button to refresh the screen contents.

CASIO®

CASIO COMPUTER CO., LTD.
6-2, Hon-machi 1-chome
Shibuya-ku, Tokyo 151-8543, Japan

MA1801-A

© 2018 CASIO COMPUTER CO., LTD.