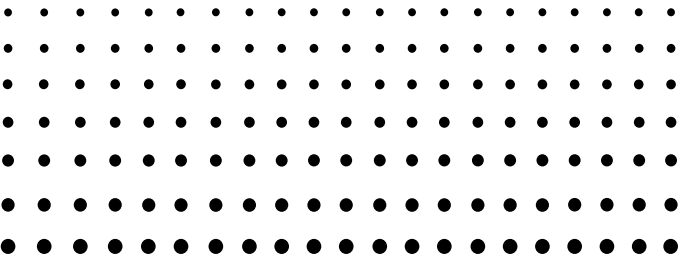
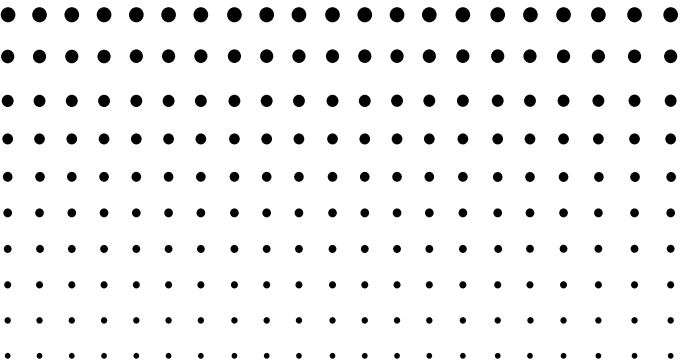


For fx-9860G Manager PLUS

E



Installing an Add-In
User's Guide



<http://world.casio.com/edu/>

You can perform the following procedure on the emulator to install an add-in application, add-in language, or an eActivity.

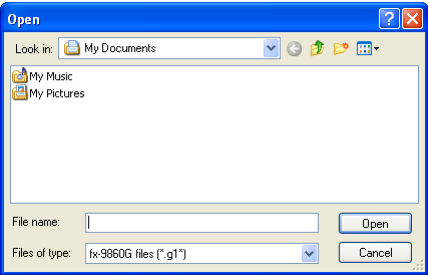
Example: To install an Add-in application

1. From the Main Menu, enter the MEMORY mode.



2. Click **[F3]** (SD).

- This displays a dialog box for opening a file.



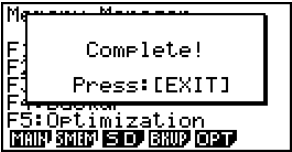
3. Select the add-in file you want and then click [Open].



4. Click **[2]**.



5. Click **[EXE]**.



6. Click **[EXIT]**.

7. Click **MENU**.

- The icon of the application you just installed should be visible on the Main Menu.



- Some add-in applications may act differently on the fx-9860G calculator than they do on the emulator.

CASIO®

CASIO COMPUTER CO., LTD.

6-2, Hon-machi 1-chome
Shibuya-ku, Tokyo 151-8543, Japan