

# Music Data Management Software Data Manager 6.1

## User's Guide

Use this manual in combination with the  
User's Guide that comes with the Instrument.

# Contents

|                                                        |           |
|--------------------------------------------------------|-----------|
| <b>Introduction .....</b>                              | <b>4</b>  |
| What is Data Manager? .....                            | 4         |
| Minimum Computer Operating Environment .....           | 4         |
| Use of This Software .....                             | 5         |
| <b>Getting Ready, Starting Up, Shutting Down .....</b> | <b>6</b>  |
| Getting Ready.....                                     | 6         |
| Starting Up Data Manager .....                         | 6         |
| Exiting Data Manager .....                             | 7         |
| <b>Transfer Mode.....</b>                              | <b>8</b>  |
| What you can do in this mode.....                      | 8         |
| Important! .....                                       | 8         |
| Data Manager Window (Transfer Tab) .....               | 8         |
| Using the Transfer Tab.....                            | 10        |
| <b>Backup Mode .....</b>                               | <b>12</b> |
| What you can do in this mode.....                      | 12        |
| Important! .....                                       | 12        |
| Screen Content .....                                   | 12        |
| Using the Backup Tab .....                             | 13        |
| <b>Package Edit Mode.....</b>                          | <b>15</b> |
| What you can do in this mode.....                      | 15        |
| Important! .....                                       | 15        |
| Screen Content .....                                   | 15        |
| Using the Package Edit Tab.....                        | 17        |

|                                                                                  |           |
|----------------------------------------------------------------------------------|-----------|
| <b>Package Transfer Mode .....</b>                                               | <b>19</b> |
| What you can do in this mode.....                                                | 19        |
| Important! .....                                                                 | 19        |
| Screen Content .....                                                             | 19        |
| Using the Package Transfer Mode .....                                            | 20        |
| <b>Audio Mode .....</b>                                                          | <b>22</b> |
| What you can do in this mode.....                                                | 22        |
| Important! .....                                                                 | 22        |
| Screen Content .....                                                             | 23        |
| Using the Audio Mode .....                                                       | 24        |
| <b>Preference Mode .....</b>                                                     | <b>27</b> |
| What you can do in this mode.....                                                | 27        |
| Screen Content .....                                                             | 27        |
| Using the Preference Mode.....                                                   | 28        |
| <b>Other Operations .....</b>                                                    | <b>29</b> |
| Using a Memory Card to Transfer Data between the Instrument and a Computer.....  | 29        |
| Important! .....                                                                 | 29        |
| Copying Files in the User Data File Folder to a Memory Card .....                | 29        |
| Copying a File from a Folder on Your Computer to the User Data File Folder ..... | 29        |
| <b>User Data Reference .....</b>                                                 | <b>30</b> |
| Rhythm Data Notes.....                                                           | 30        |
| <b>Error Messages .....</b>                                                      | <b>31</b> |

# Introduction

## What is Data Manager?

Data Manager is application software that lets you perform the following operations on your computer.

- Save Instrument\*<sup>1</sup> user data on your computer.
- Transfer user data files from your computer to the Instrument.
- Convert and save audio files\*<sup>2</sup> you recorded to a memory card\*<sup>3</sup> with the Instrument in a format that can be played on a computer.
- Convert WAVE files to a format that can be played by the Instrument and save them to a memory card.

\*1 The term “Instrument” in this manual refers to one of the CASIO electronic musical instruments included in the separate “Data Manager 6.1 Compatible Model List”.

\*2 For audio recording and playback, use one of the models specified as “Audio function built-in” in the “Data Manager 6.1 Compatible Model List”.

\*3 Use an SD memory card or an SDHC memory card. See the user’s guide that comes with the Instrument for details. Do not try to use any other type of memory card.

### IMPORTANT!

- **Do not use any other applications, disconnect your computer’s USB cable, remove your computer’s memory card, or turn any peripheral connected to your computer on or off while Data Manager is running. Doing so not only will cause Data Manager to operate abnormally, it also can corrupt data and cause malfunction of the Instrument and/or your computer.**

## Minimum Computer Operating Environment

### ■ Supported Operating Systems

Windows® XP (SP2 or higher) \*<sup>1</sup>

Windows Vista® \*<sup>2</sup>

Windows® 7 \*<sup>3</sup>

Mac OS® X (10.5.X, 10.6.X, 10.7.X) \*<sup>4</sup>

\*1: Windows XP Home Edition

Windows XP Professional (32bit Versions)

\*2: Windows Vista (32bit Versions)

\*3: Windows 7 (32bit Versions, 64bit Versions)

\*4: Intel Mac only

### ■ Display Settings

Resolution: At least 800 × 600 pixels

Color : Windows OS: At least 16bit

### IMPORTANT!

- **The above minimum computer operating environment does not guarantee proper operation of this software.**

## Use of This Software

- All rights to the software (this Software) revert to CASIO COMPUTER CO., LTD.
- Distribution of any version of this Software created by altering the structure, content, or any other aspect of the original Software is prohibited.
- This Software is provided “as is,” and CASIO makes no express warranty concerning the suitability of the Software functions for any particular purpose. NOTE THAT IN NO EVENT SHALL CASIO BE LIABLE FOR ANY DAMAGES WHATSOEVER (INCLUDING, WITHOUT LIMITATION, DAMAGES FOR LOSS OF PROFITS, BUSINESS INTERRUPTION, LOSS OF INFORMATION) ARISING OUT OF THE USE OF OR INABILITY TO USE THIS SOFTWARE, EVEN IF CASIO HAS BEEN ADVISED OF THE POSSIBILITY OF SUCH DAMAGES.
- You are granted the right to use this Software free of charge. You are also granted the right to distribute this Software freely, as long as such distribution is not for profit.
- Note that CASIO will not provide any support for this Software or its functions.
- The contents of this Software are subject to change without notice.
- The screen shots shown in this manual may differ from the screen contents produced by your computer.
- Except as authorized under GNU LESSER GENERAL PUBLIC LICENSE Version 2.1 (LGPL), you are not allowed to modify this Software without permission from CASIO.
- This Software uses the LGPL version Qt Library 4.6.3, and performs operations by dynamically linking to the Qt library. You can obtain the Qt library from <http://qt.nokia.com>.
- For the full text of the LGPL, see the LGPL.txt file that is included with the files distributed with this Software.

# Getting Ready, Starting Up, Shutting Down

## Getting Ready

### Windows Users

- 1. Download the Data Manager software file from the CASIO website to your computer.**
- 2. Uncompress the file.**

This will create a folder named "CASIO DataManager6" on your computer.

- If you have Data Manager 6.0 installed, replace each of your current "CASIO DataManager6" folders with Data Manager 6.1.

### Mac Users

- 1. Download the Data Manager software file from the CASIO website to your computer.**
- 2. Open the file.**

This will create an image named "CASIO DataManager6".

Copy "CASIO DataManager6" to your application folder.

- If you have Data Manager 6.0 installed, replace it with Data Manager 6.1.

## Starting Up Data Manager

### Windows Users

- 1. On the Instrument, select the rhythm mode.**

Data transfer and data delete cannot be performed when the Instrument is in any mode besides the rhythm mode.

- 2. Quit all other applications running on your computer.**

Data Manager will not run correctly if any other application is running on your computer.

- 3. Open the folder named "CASIO DataManager6".**

- 4. Double-click "CASIO DataManager6.exe".**

This will start up Data Manager.

### Mac Users

- 1. On the Instrument, select the rhythm mode.**

Data transfer and data delete cannot be performed when the Instrument is in any mode besides the rhythm mode.

- 2. Quit all other applications running on your computer.**

Data Manager will not run correctly if any other application is running on your computer.

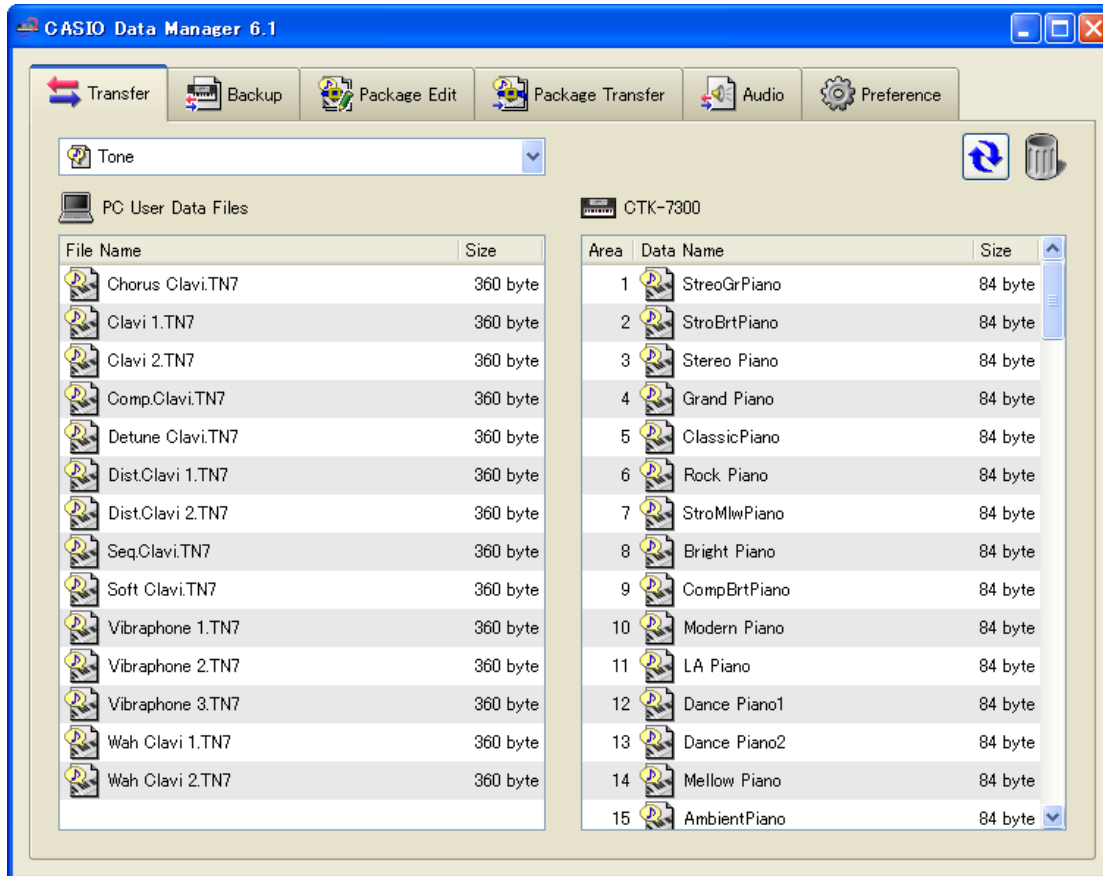
- 3. In the application folder, double-click "CASIO DataManager6".**

This will start up Data Manager.

## Screen Following Startup

Starting up Data Manager will display a screen like the one shown below. Click a tab to select the mode you want. For details about each mode, see the sections of this manual that cover them.

- Examples show Windows XP screen shots.



## Exiting Data Manager

Click the close (x) button in the title bar of the Data Manager window.

- A confirmation dialog box will appear if you try to exit Data Manager while it is transferring data or performing some other process. Click the [Yes] button to terminate the process and exit Data Manager. The effect of terminating an ongoing process depends on the type of process being performed. See the explanation of each mode in this manual for full details.

# Transfer Mode

## What you can do in this mode...

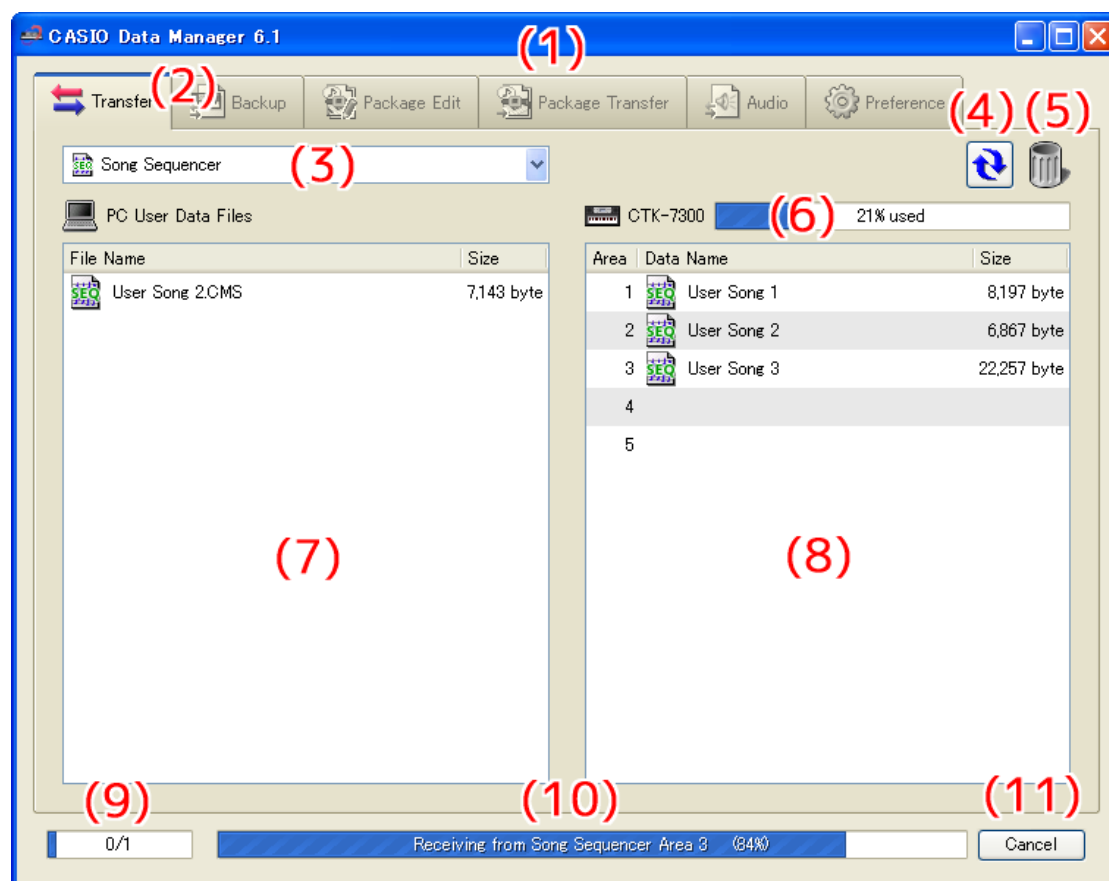
- Save user data you created on the Instrument to your computer.
- Transfer user data files from your computer to the Instrument.
- Delete user data in Instrument memory.
- Delete user data files stored on your computer.

## Important!

- Your computer must be connected to the Instrument with a USB cable to use the functions in the transfer mode.
- See the Instrument's User's Guide for details about how to connect to a computer.
- Data Manager will not operate correctly if multiple Instruments are connected to your computer.
- Do not perform any operation on the Instrument while transferring Instrument data in the transfer mode. Doing so can cause operation problems with Data Manager and/or the Instrument, and can corrupt data in Instrument memory.

## Data Manager Window (Transfer Tab)

- Examples show Windows XP screen shots.



### (1) Title bar

Click the close (x) button on the right end of the title bar to exit Data Manager. “<Disconnected>” is displayed in the title bar when there is no connection between the computer and Instrument.

### (2) Mode tabs

Select the tab for the mode you want to use. For details about each mode, see the sections of this manual that cover them.

### (3) Data type selection box

Selects the target data type for the mode you are in. The files and data that appear on the “(7) Computer file list” and “(8) Instrument data list” change in accordance with the data type you select here. The available data types depend on the connected Instrument model. For details, see the page 30.



#### **(4) Reload button**

Refreshes “(7) Computer file list” and “(8) Instrument data list” contents. Note that in the transfer mode, Data Manager does not refresh the lists automatically when you change user data by performing an operation on the Instrument, or when you perform a user data file folder (page 27) operation on your computer without using Data Manager. After performing such operations, click the reload button to refresh the lists.

#### **(5) Trash**

Use trash to delete Instrument data and computer files.

#### **(6) Memory usage bar**

Shows the current memory usage status of the Instrument’s memory. This bar is displayed when “Song Sequencer” or “Music Preset” is selected by the “(3) Data type selection box”. Maximum allowable memory usage is 100%.

#### **(7) Computer file list**

Lists data stored in the computer user data folder (page 27).

#### **(8) Instrument data list**

Lists user data stored in Instrument memory.

#### **(9) All process progress bar**

Shows how many processes have been completed out of the total number of processes being performed. This bar is displayed while processes are being performed.

#### **(10) Individual process progress bar**

Shows the progress of the current process. This bar is displayed while a process is being performed.

#### **(11) Cancel button**

Cancels an ongoing data transfer or data delete process. This button is displayed while a process is being performed.

# Using the Transfer Tab

## Transferring Data from the Instrument to a Computer

1. Use the “(3) Data type selection box” to select the type of data you want to transfer.
2. In the “(8) Instrument data list”, find the data you want to transfer.
3. Drag the data you want to transfer from the “(8) Instrument data list” and drop it\*<sup>1</sup> into the “(7) Computer file list”.

The files you drag and drop are placed in a queue, and transferred one-by-one. The saved file appears in the “(7) Computer file list” as each process is completed.

### **IMPORTANT!**

- The displayed size of a transferred file in the “(7) Computer file list” may be different from the displayed size of the same file in the “(8) Instrument data list”.

\*<sup>1</sup> “Drag-and-drop” is a computer mouse operation for moving files and data from one location to another. Move the mouse pointer to the icon of the file or data you want to move and then hold down the mouse button. Keeping the mouse button depressed, move the mouse cursor to the destination of the move (“dragging” the file along with it) and then release the mouse button to “drop” the file or data into the new location.

## Transferring User Data from a Computer to the Instrument

1. Use the “(3) Data type selection box” to select the type of data you want to transfer.
2. In the “(7) Computer file list”, find the data you want to transfer.
3. In the “(8) Instrument data list”, find the area to which you want to transfer the data.
4. Drag the data you want to transfer from the “(7) Computer file list” and drop it into the “(8) Instrument data list”.

The files you drag and drop are placed in a queue, and transferred one-by-one. The saved file appears in the “(8) Instrument data list” as each process is completed. If the destination area you select already contains data, a confirmation dialog box will appear before the transfer process is executed. Note that overwriting data causes the previous data to be deleted. Click the [Yes] button to overwrite the existing data with the new data.

### **IMPORTANT!**

- The displayed size of transferred data in the “(8) Instrument data list” may be different from the displayed size of the same data in the “(7) Computer file list”.

## Deleting Instrument User Data

### **1. Use the “(3) Data type selection box” to select the type of data you want to delete.**

You can delete only the three following types of data from Instrument memory: Rhythm, Song Sequencer, and Music Preset.

### **2. In the “(8) Instrument data list”, find the data you want to delete.**

### **3. Drag the data you want to delete from the “(8) Instrument data list” and drop it into “(5) Trash”.**

The files you drag and drop are placed in a queue, and deleted one-by-one. The deleted data is removed from the “(8) Instrument data list” as each process is completed.

## Deleting User Data from a Computer

### **1. Use the “(3) Data type selection box” to select the type of data you want to delete.**

### **2. In the “(7) Computer file list”, find the file you want to delete.**

### **3. Drag the data you want to delete from the “(7) Computer file list” and drop it into “(5) Trash”.**

This performs the same operation as that performed on your operating system when you discard something with trash.

## Renaming a User Data File on Your Computer

### **1. In the “(7) Computer file list”, select the file you want to rename and then double-click it.**

### **2. This will change to the file name editing mode. Enter the new name.**

### **3. After you are finished entering a name, press the [Enter] key on your computer keyboard.**

#### **IMPORTANT!**

- The file name you specify here is not reflected in the file name display on the Instrument screen. Changing the file name displayed by the Instrument is not supported by Data Manager. Use the appropriate Instrument operation to change the display file name. For details about changing the file name displayed by the Instrument, see the Instrument’s User’s Guide.

## Canceling a Transfer or Delete Process

Click the “(11) Cancel button” while a transfer or Instrument data delete process is being performed. This will cause a confirmation dialog box to appear. Click the [Yes] button to confirm you want to cancel.

This will cancel the ongoing process and also discard any files in the transfer or delete queue.

#### **IMPORTANT!**

- Processes that have already been completed cannot be canceled.
- With some types of data, the “(11) Cancel button” will become dimmed during a data transfer or delete operation, which indicates that the button is disabled. This means that the current operation cannot be canceled part way through.

# Backup Mode

## What you can do in this mode...

- Back up all user data in Instrument memory.
- Transfer and save backed up files to your computer.

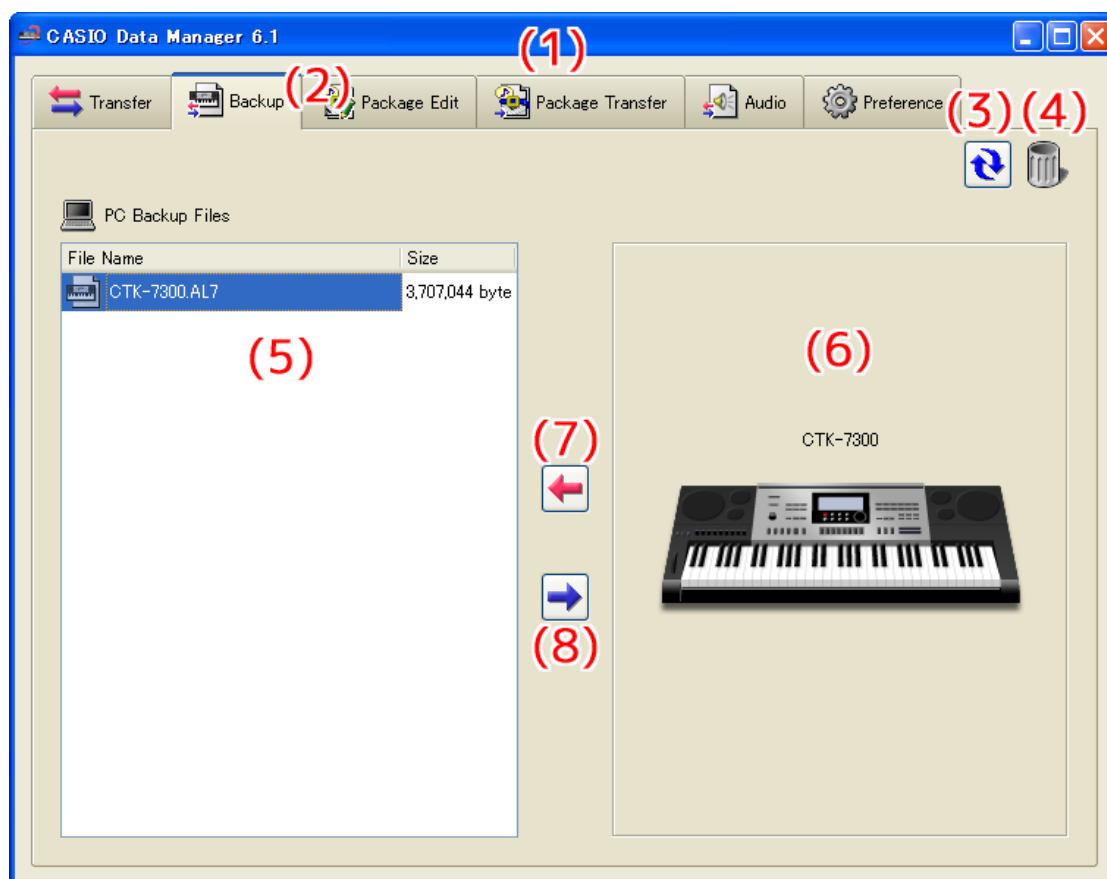
## Important!

- Do not perform any operation on the Instrument while transferring Instrument data in the backup mode. Doing so can cause operation problems with Data Manager and/or the Instrument, and can corrupt data in Instrument memory.
- Your computer must be connected to the Instrument with a USB cable to use the functions in the backup mode.
- See the Instrument's User's Guide for details about how to connect to a computer.
- Data Manager will not operate correctly if multiple Instruments are connected to your computer.
- When you transfer backed up files to the Instrument, only user data is restored on the Instrument. Restoring does not restore all Instrument data.

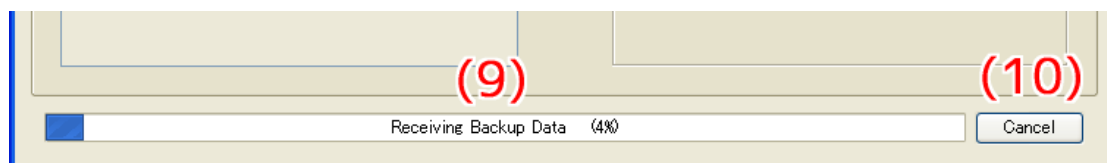
## Screen Content

### Backup Tab

- Examples show Windows XP screen shots.



### Data Transfer Progress Bar



### (1) Title bar

Click the close (x) button on the right end of the title bar to exit Data Manager. “<Disconnected>” is displayed in the title bar when there is no connection between the computer and Instrument.

### (2) Mode tabs

Select the tab for the mode you want to use. For details about each mode, see the sections of this manual that cover them.

### **(3) Reload button**

Click to refresh the “(5) Computer file list” with the newest information. Note that in the backup mode, Data Manager does not refresh the list automatically when you perform a user data file folder (page 27) operation on your computer without using Data Manager. After performing such an operation, click the reload button to refresh the list.

### **(4) Trash**

Use trash to delete backup files.

### **(5) Computer file list**

Lists backup files stored in the computer user data folder (page 27).

### **(6) Instrument image**

Shows the currently connected Instrument model.

### **(7) Backup file receive button**

Click to transfer a backup file from the Instrument to your computer.

### **(8) Send backup file button**

Select a backup file in the “(5) Computer file list” and then click this button to transfer the backup file to the Instrument.

### **(9) Progress bar**

Shows the progress of the current transfer process. This progress bar is displayed only while a transfer process is being performed.

### **(10) Cancel button**

Cancels the current ongoing transfer. This button is displayed only while a transfer process is being performed.

## **Using the Backup Tab**

### **Transferring Data from the Instrument to a Computer**

There are two different methods that can be used to transfer a backup file from the Instrument to your computer.

#### **■ Drag and Drop Transfer**

Drag the backup file from the “(6) Instrument image” and drop it into the “(5) Computer file list”.

#### **■ Button Operation Transfer**

Click the “(7) Backup file receive button”.

Either of the above operations will cause the “(9) Progress bar” to appear and file transfer will start.

### **IMPORTANT!**

- **Transfer of a backup file from the Instrument to a computer takes about 10 minutes for a model specified as a “Drawbar Organ Model” or “Oriental Music Model” on the “Data Manager 6.1 Compatible Model List”. For other models, it takes about one minute. Perform this operation when you have enough time to wait for the process to complete.**
- **Except for the cancel operation, all other operations are disabled while a backup file is being transferred.**

## **Transferring from a Computer to the Instrument**

There are two different methods that can be used to transfer a backup file from your computer to the Instrument.

### **■ Drag and Drop Transfer**

- 1. In the “(5) Computer file list”, find the backup file you want to transfer to the Instrument.**
- 2. Drop the file onto the “(6) Instrument image”.**
- 3. In response to the confirmation dialog box that appears, click the [Yes] button.**

### **■ Button Operation Transfer**

- 1. In the “(5) Computer file list”, select the backup file you want to transfer to the Instrument.**
- 2. Click the “(8) Send backup file button”.**
- 3. In response to the confirmation dialog box that appears, click the [Yes] button.**

Either of the above operations will cause the “(9) Progress bar” to appear and file transfer will start. Transfer will not be performed if you click the [No] button on the confirmation dialog box instead of the [Yes] button.

### **IMPORTANT!**

- Transfer of a backup file from a computer to the Instrument takes about 10 minutes for a model specified as a “Drawbar Organ Model” or “Oriental Music Model” on the “Data Manager 6.1 Compatible Model List”. For other models, it takes about one minute. Perform this operation when you have enough time to wait for the process to complete.
- Except for the cancel operation, all other operations are disabled while a backup file is being transferred.

## **Deleting a Backup File from Your Computer**

- 1. In the “(5) Computer file list”, find the file you want to delete.**
- 2. Drag the data you want to delete from the “(5) Computer file list” and drop it into “(4) Trash”.**  
This performs the same operation as that performed on your operating system when you discard something with trash.

## **Renaming a Backup File on Your Computer**

- 1. In the “(5) Computer file list”, select the file you want to rename and then double-click it.**
- 2. This will change to the file name editing mode. Enter the new name.**
- 3. After you are finished entering a name, press the [Enter] key on your computer keyboard.**

## **Canceling a Transfer Process**

Click the “(10) Cancel button” while a transfer process is being performed. This will cause a confirmation dialog box to appear. Click the [Yes] button to confirm you want to cancel.

### **IMPORTANT!**

- Canceling an ongoing transfer process can cause improper operation because only part of the data was transferred to Instrument memory. If this happens, perform the transfer operation from the beginning again.

# Package Edit Mode

## What you can do in this mode...

Create and edit package files that group multiple user files into a single file.

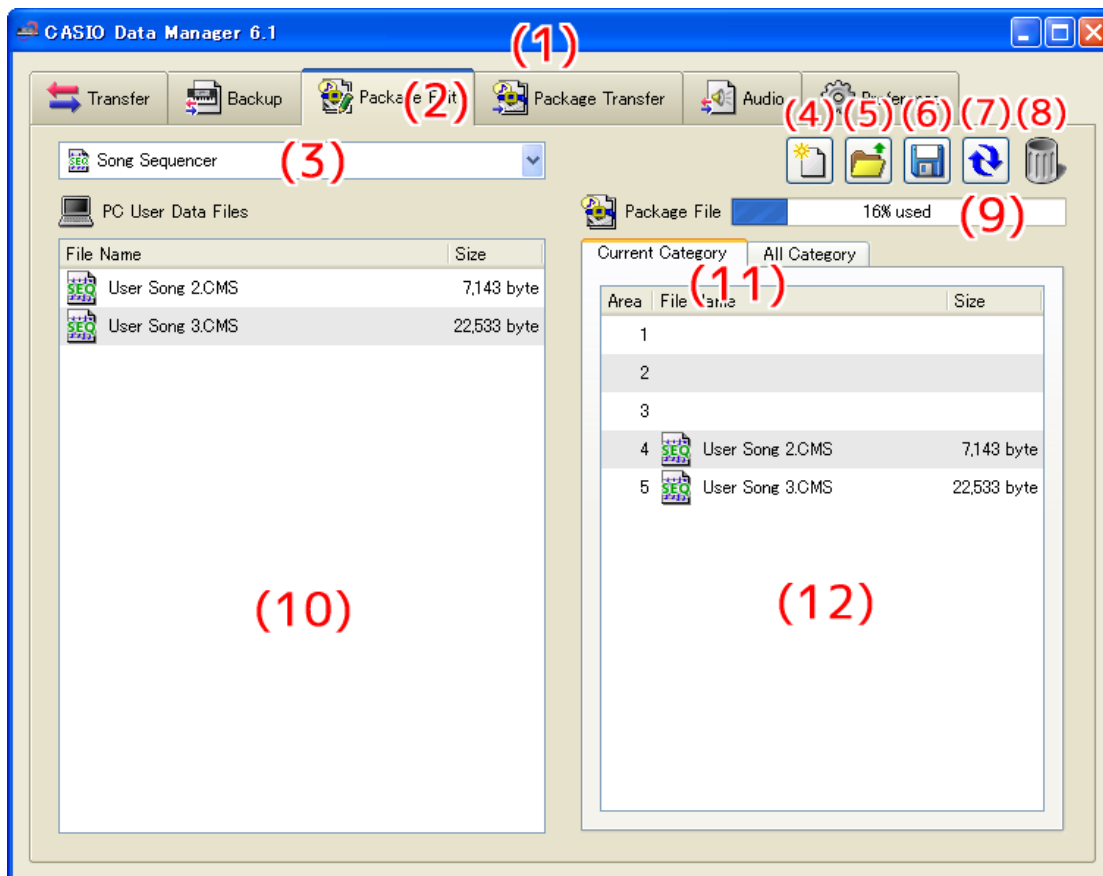
## Important!

- Though a USB connection is not required to use the package edit mode, a new package created when there is no USB connection will produce a package for the Instrument that was last connected via Data Manager.
- For information about compatibility between different Instruments, see the separate “CASIO Electronic Keyboard Data Compatibility”.
- To transfer a package file to the Instrument, use the package transfer mode.
- Package files are native to Data Manager and cannot be used directly by an Instrument. To use the files that make up a package file on an Instrument, you must use Data Manager to transfer them to the Instrument.

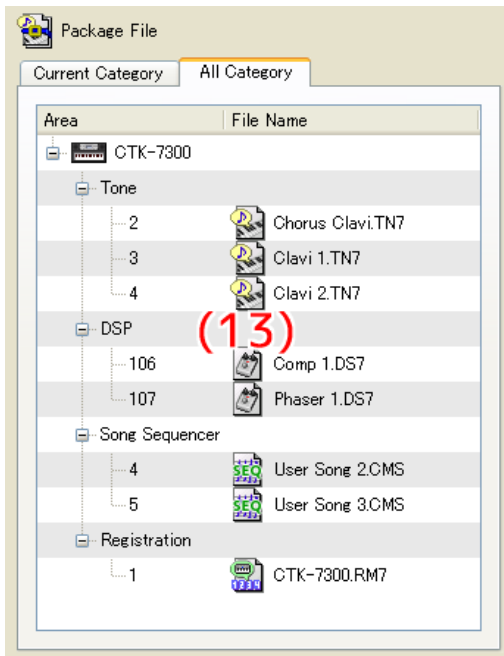
## Screen Content

### Package Edit Tab

- Examples show Windows XP screen shots.



## All Category Tab



### (1) Title bar

Click the close (x) button on the right end of the title bar to exit Data Manager. “<Disconnected>” is displayed in the title bar when there is no connection between the computer and Instrument.

### (2) Mode tabs

Select the tab for the mode you want to use. For details about each mode, see the sections of this manual that cover them.

### (3) Data type selection box

Selects the target data type for the mode you are in. The files that appear on the “(10) Computer file list” and “(12) Package content file list” change in accordance with the data type you select here. The available data types depend on the connected Instrument model. For details, see the page 30.

### (4) New package file button

Creates a new package file.

### (5) Open package file button

Opens an existing package file and displays its contents.

### (6) Save package file button

Saves the package file being edited.

### (7) Reload button

Click to refresh the “(10) Computer file list” with the newest information. Note that in the package edit mode, Data Manager does not refresh the list automatically when you perform a user data file folder (page 27) operation on your computer without using Data Manager. After performing such an operation, click the reload button to refresh the list.

### (8) Trash

Use trash to delete computer files or to delete user data files from a package file.

### (9) Memory capacity bar

This bar appears when “Song Sequencer” or “Music Preset” is selected with the “(3) Data type selection box”. After you transfer the package file you are editing to the Instrument, it shows the approximate memory usage for the currently selected data type (Song Sequencer or Music Preset). Note, however, that the capacity is an approximate value only, so you may not be able to transfer data even if the memory usage value indicates that it should be able to fit in memory. You cannot include a file that would cause memory capacity to exceed 100%.

### (10) Computer file list

Lists data stored in the computer user data folder (page 27).



### **(11) Package content file view tabs**

Use these tabs to switch between two different views of the files inside a package. The Current Category tab shows a “(12) Package content file list”, while the All Category tab shows a “(13) Package content file tree” of all the files in the package.

### **(12) Package content file list**

Lists the files in the package file being edited.

### **(13) Package content file tree**

Displays all of the user data in the package file being edited in data type tree format. Package file editing is not supported while the package file tree view is selected.

## **Using the Package Edit Tab**

### **Basic Operation**

The following is the basic flow for package file editing.

#### **1. Create a new package file.**

To create new package file immediately after starting up Data Manager, click the Package Edit tab. This will immediately enable package file editing. To discard the package file you are currently editing and create a new one, click the “(4) New package file button”.

- If the package file you are editing has not been saved yet, a confirmation dialog box will appear. For details, see “Save Confirmation Dialog Box” on page 18.

#### **2. Register user data files to the package file.**

**1. Use the “(3) Data type selection box” to select the type of data you want to register to the package file.**

**2. Use the “(11) Package content file view tabs” to select the Current Category tab.**

**3. In the “(10) Computer file list”, find the data file you want to register to the package file.**

**4. In the “(12) Package content file list”, find the area to which you want to register the file.**

**5. Drag the file from the “(10) Computer file list” and drop it into the “(12) Package content file list” area.**

**6. Repeat the above steps as many times are required.**

#### **3. Save the edited package file.**

Click the “(6) Save package file button”. This will display a dialog box for assigning a name to the package file. Specify a name and save the file.

### **IMPORTANT!**

- The file name extension for package files is “.PK7”.  
Use of a file with a file name extension other than “.PK7” is not supported.

## Other Operations

### ■ Deleting a File Registered to a Package File

Drag the data you want to delete from the “(12) Package content file list” and drop it into “(8) Trash”.

### ■ Re-editing an Existing Package File

Click the “(5) Open package file button”. This will display a dialog box for selecting a package file to edit. Select the package file you want to edit.

- If the package file you are editing has not been saved yet, a confirmation dialog box will appear. For details, see “Save Confirmation Dialog Box” on page 18.

### ■ Removing a File Registered to a Package File

Drag the data you want to remove from the “(12) Package content file list” and drop it into the “(10) Computer file list”. This removes the file from the package file and saves it in the user data file folder (page 27).

### ■ Viewing All the Files Registered to a Package File

Select the All Category tab with the “(11) Package content file view tabs” to display the “(13) Package content file tree”. This provides a view of all of the files registered to a package file, without the need to change the data type with the “(3) Data type selection box”.

### ■ Renaming a User Data File on Your Computer

1. In the “(10) Computer file list”, select the file you want to rename and then double-click it.
2. This will change to the file name editing mode. Enter the new name.
3. After you are finished entering a name, press the [Enter] key on your computer keyboard.

### IMPORTANT!

- The file name you specify here is not reflected in the file name display on the Instrument screen. Changing the file name displayed by the Instrument is not supported by Data Manager. Use the appropriate Instrument operation to change the display file name. For details about changing the file name displayed by the Instrument, see the Instrument’s User’s Guide.

### ■ Deleting User Data from a Computer

1. Use the “(3) Data type selection box” to select the type of data you want to delete.
2. In the “(10) Computer file list”, find the file you want to delete.
3. Drag the data you want to delete from the “(10) Computer file list” and drop it into “(8) Trash”.

This performs the same operation as that performed on your operating system when you discard something with trash.

## Save Confirmation Dialog Box

Clicking the “(4) New package file button” or “(5) Open package file button”, or attempting to exit Data Manager after you have edited but not yet saved a package file will display a confirmation dialog box asking if you want to save your edits. Click the [Cancel] button on the dialog box to close the dialog box and return to the package file you are currently editing. Click the [Yes] button to display a dialog box for assigning a name to the package file. Assign a name and save the file. Click the [No] button to discard the changes you have made to the package file you are editing without saving them.

# Package Transfer Mode

## What you can do in this mode...

Transfer package data created with the package edit mode to an Instrument.

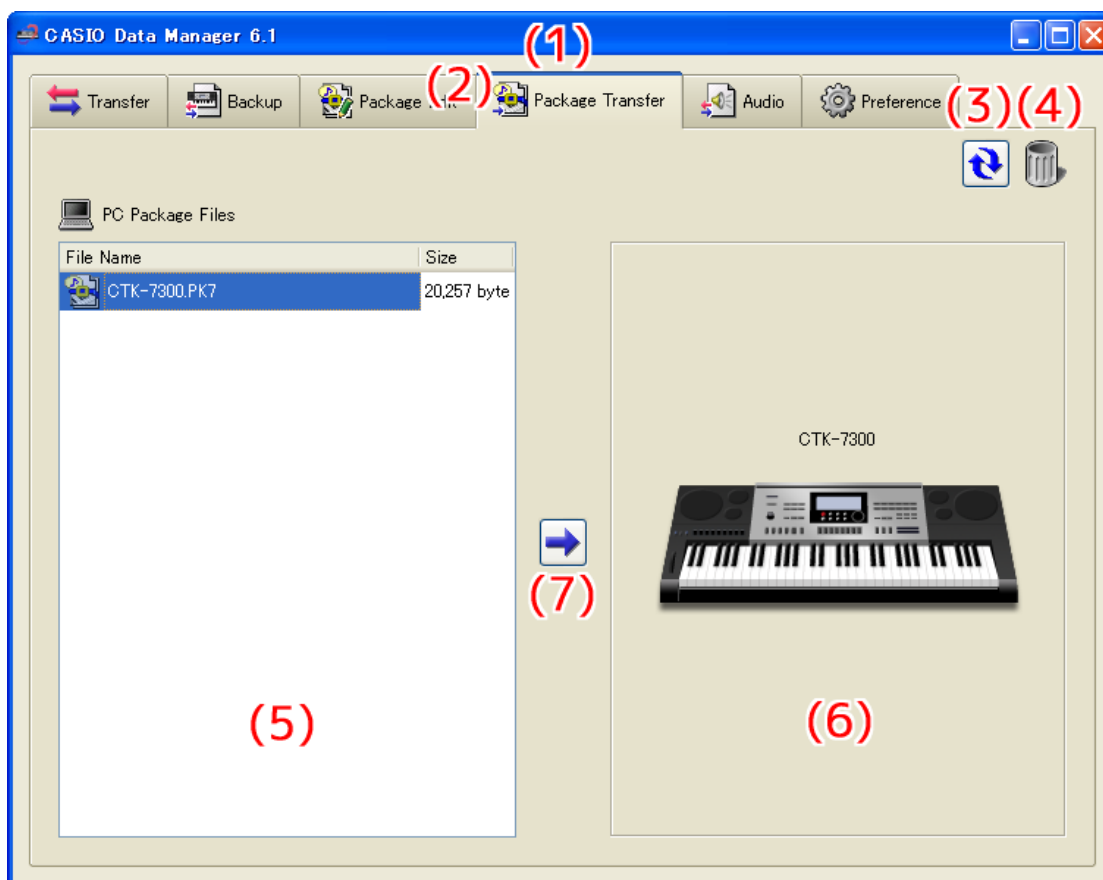
## Important!

- Your computer must be connected to the Instrument with a USB cable to use the functions in the package transfer mode.
- See the Instrument's User's Guide for details about how to connect to a computer.
- Data Manager will not operate correctly if multiple Instruments are connected to your computer.
- Do not perform any operation on the Instrument while transferring Instrument data in the package transfer mode. Doing so can cause operation problems with Data Manager and/or the Instrument, and can corrupt data in Instrument memory.

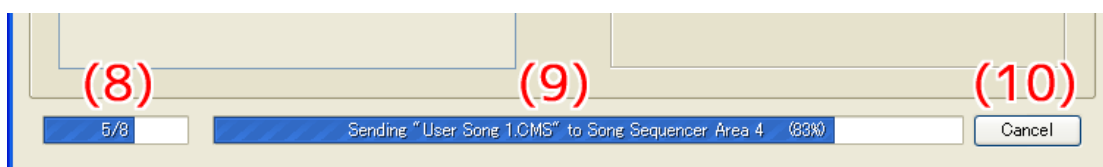
## Screen Content

### Package Transfer Tab

- Examples show Windows XP screen shots.



### Data Transfer Progress Bar



### (1) Title bar

Click the close (x) button on the right end of the title bar to exit Data Manager. "<Disconnected>" is displayed in the title bar when there is no connection between the computer and Instrument.

### (2) Mode tabs

Select the tab for the mode you want to use. For details about each mode, see the sections of this manual that cover them.

### **(3) Reload button**

Click to refresh the “(5) Computer file list” with the newest information. Note that in the package transfer mode, Data Manager does not refresh the list automatically when you perform a user data file folder (page 27) operation on your computer without using Data Manager. After performing such an operation, click the reload button to refresh the list.

### **(4) Trash**

Use trash to delete package files.

### **(5) Computer file list**

Lists package files stored in the computer user data folder (page 27).

### **(6) Instrument image**

Shows the currently connected Instrument model.

### **(7) Send package file button**

Select a package file in the “(5) Computer file list” and then click this button to transfer the files inside the package file to the Instrument.

### **(8) All process progress bar**

Shows how many files have been transferred out of the total number of files registered in the package file. This progress bar is displayed only while a transfer process is being performed.

### **(9) Individual process progress bar**

Shows the progress of the current transfer process. This bar shows the transfer status of each individual file within the package file. It does not show the overall progress of package file transfer. This progress bar is displayed only while a transfer process is being performed.

### **(10) Transfer cancel button**

Cancels an ongoing package file transfer operation. This button is displayed only while a transfer process is being performed.

## **Using the Package Transfer Mode**

### **Transferring from a Computer to the Instrument**

There are two different methods that can be used to transfer a package file from your computer to the Instrument.

#### **■ Drag and Drop Transfer**

- 1. In the “(5) Computer file list”, find the package file you want to transfer to the Instrument.**
- 2. Drop the package file onto the “(6) Instrument image”.**
- 3. In response to the confirmation dialog box that appears, click the [Yes] button.**

## ■ Button Operation Transfer

1. In the “(5) Computer file list”, select the package file you want to transfer to the Instrument.
2. Click the “(7) Send package file button”.
3. In response to the confirmation dialog box that appears, click the [Yes] button.

Either of the above operations will cause the “(9) Individual process progress bar” to appear and file transfer will start. Transfer will not be performed if you click the [No] button on the confirmation dialog box instead of the [Yes] button. You can click the “(10) Transfer cancel button” at this time to cancel the transfer operation.

### IMPORTANT!

- Depending on the number of files registered to the package file, package file transfer may take some time to complete. Perform this operation when you have enough time to wait for the process to complete.
- Except for the cancel operation, all other operations are disabled while a package file is being transferred.

## Deleting a Package File from a Computer

1. In the “(5) Computer file list”, find the file you want to delete.
2. Drag the file from the “(5) Computer file list” and drop it into “(4) Trash”.

This performs the same operation as that performed on your operating system when you discard something with trash.

## Renaming a Package File on Your Computer

1. In the “(5) Computer file list”, select the file you want to rename and then double-click it.
2. This will change to the file name editing mode. Enter the new name.
3. After you are finished entering a name, press the [Enter] key on your computer keyboard.

## Canceling a Transfer Process

Click the “(10) Transfer cancel button” while a transfer is being performed. This will cause a confirmation dialog box to appear. Click the [Yes] button to confirm you want to cancel.

### IMPORTANT!

- You may not be able to cancel an ongoing Song Sequencer data transfer process.

# Audio Mode

## What you can do in this mode...

- Save audio files stored on a memory card to a computer as WAVE files.
- Convert audio WAVE files on your computer to “play-only files” that can be played by the Instrument, and save them to a memory card.

## Important!

- To use the functions in the audio mode, you need to have your computer connected to a memory card that has been formatted on one of the “Audio Function Built-in Models” in the separate “Data Manager 6.1 Compatible Model List”.
- A memory card inserted in the Instrument’s card slot cannot be read from your computer. Use a computer memory card reader for connection.
- The functions in the audio mode can be used only with a memory card that has been formatted on a model under “Audio Function Built-in Models” in the separate “Data Manager 6.1 Compatible Model List”.
- Sufficient storage capacity is required on your computer when using the audio mode to convert a WAVE file.
- Only WAVE files of the format defined below can be converted by the audio mode for files that play back on the Instrument.

Data format : Linear PCM

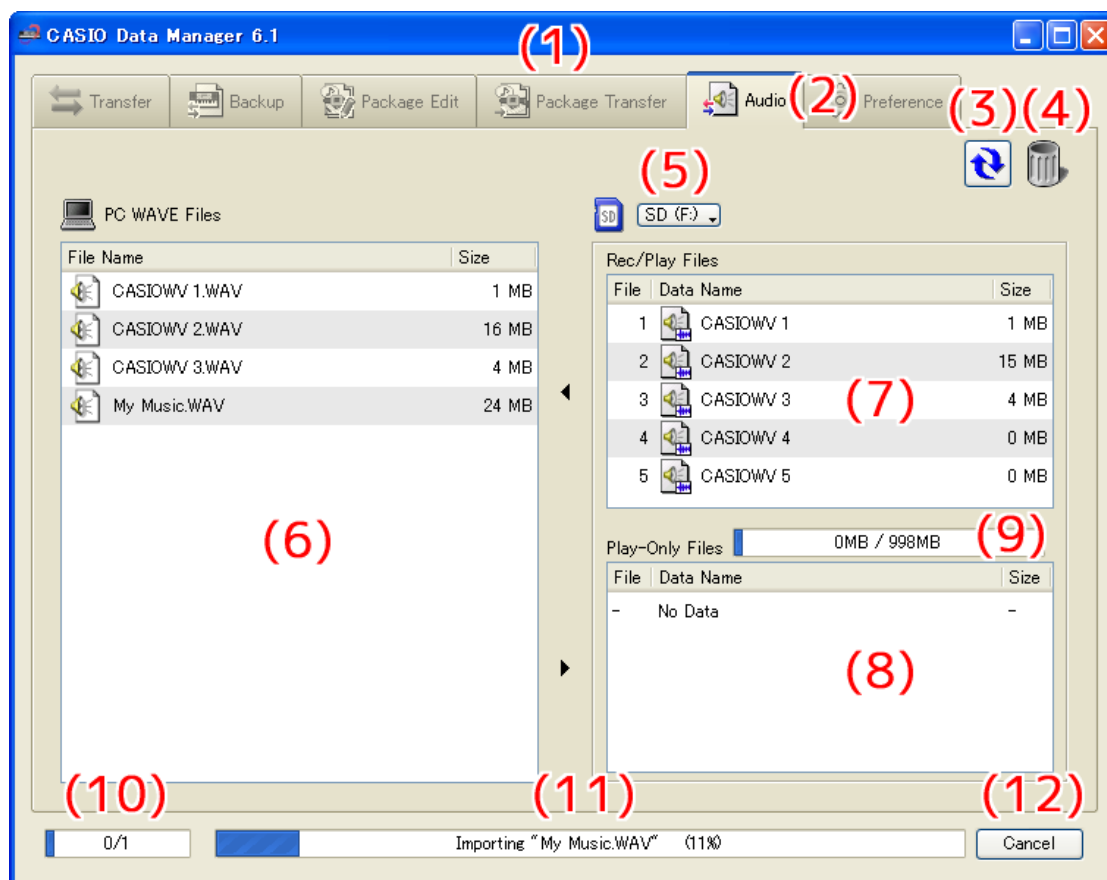
Quantization bit rate: 8bit/sample unsigned, 16bit/sample signed, 24bit/sample signed, 32bit/sample signed

Playback time : Up to 99 minutes 59 seconds

- Even if a particular WAVE file satisfies the above format, it may not be able to be converted properly due to other reasons.
- Files converted in the audio mode to a format that can be played on the Instrument can be played back only. The Instrument cannot record to a converted file.
- When an audio file recorded on the Instrument is saved to a computer, it is saved to a WAVE file of the format below.  
44100Hz, 16bit/sample signed, Stereo
- Under certain computer settings, the display may show the files described below on the memory card. Never try to delete or perform any other file operation on these files. Doing so can result in improper playback on the Instrument.
  - CASIOWV1.WAV to CASIOWV9.WAV
  - CASIOW10.WAV to CASIOW20.WAV
  - Files with names that start with an underscore ( \_ ) and end with the extension “.WV7”.
  - CASIOWAV.DIR

# Screen Content

- Examples show Windows XP screen shots.



## (1) Title bar

Click the close (x) button on the right end of the title bar to exit Data Manager. “<Disconnected>” is displayed in the title bar when there is no connection between the computer and Instrument.

## (2) Mode tabs

Select the tab for the mode you want to use. For details about each mode, see the sections of this manual that cover them.

## (3) Reload button

Refreshes the “(6) Computer file list”, “(7) Memory card record/play file list” and “(8) Memory card play-only file list” contents. Note that in the audio mode, Data Manager does not refresh the lists automatically when you perform a WAVE file folder (page 27) or memory card file operation on your computer without using Data Manager. After performing such an operation, click the reload button to refresh the lists.

## (4) Trash

Use trash to delete computer WAVE files and memory card audio files.

## (5) Select memory card button

Selects the target memory card for audio mode operations.

## (6) Computer file list

Lists files stored in the computer WAVE file folder (page 27).

## (7) Memory card record/play file list

Lists record/play files on the current target memory card.

## (8) Memory card play-only file list

Lists play-only files on the current target memory card. The Instrument can only play the files shown here.

## (9) Memory card capacity bar

Shows the capacity of the current target memory card.

## (10) All process progress bar

Shows how many processes have been completed out of the total number of processes being performed. This bar is displayed only while a process is being performed.

## (11) Individual process progress bar

Shows the progress of the current process. This bar is displayed only while a process is being performed.

## (12) Cancel button

Cancels the current ongoing process. This button is displayed only while a process is being performed.

# Using the Audio Mode

## Selecting the Audio Mode Target Memory Card

### ■ Click the “(5) Select memory card button”. On the list of memory cards that appears, select the one that contains audio files recorded by the Instrument.

- The memory card you select here will be selected automatically the next time you start up Data Manager. If the memory card content read process fails for some reason, the “(7) Memory card record/play file list” and “(8) Memory card play-only file list” will remain blank. The following are the most common causes of read failures.
  - The memory card is not selected correctly.
    - Select the memory card you want to use.
  - There is no folder named “MUSICDAT” on the memory card.
  - The card is formatted on an Instrument that does not have an audio function.
  - An audio file on the memory card is corrupted.
    - Reformat the memory card on an Instrument that has an audio function.

### IMPORTANT!

- **Formatting a memory card deletes all of its contents. Be sure to save any important files on the memory card that you want to keep to another location before formatting the memory card.**

If reformatting the memory card does not resolve the problem, it could mean that the memory card is defective. In this case, use a different memory card.

## Saving an Audio File Recorded on the Instrument to a Computer

- 1. In the “(7) Memory card record/play file list”, find the file you want to save to the computer.**
- 2. Drop the file into the “(6) Computer file list”.**

The files you drag and drop are placed in a queue, and saved one-by-one. The saved file appears in the “(6) Computer file list” as each process is completed.

### IMPORTANT!

- **The above step performs a data conversion process. Depending on the length of the recording, it may take some time to complete. Perform this operation when you have enough time to wait for the process to complete.**
- **The data transfer process may cause the volume level of an audio file to change.**



## Making a Computer WAVE File Playable on the Instrument

1. In the “(6) Computer file list”, find the file you want to play on the Instrument.
2. Drag the file from the “(6) Computer file list” and drop it into the “(8) Memory card play-only file list”.

The files you drag and drop are placed in a queue, and saved one-by-one. The WAVE file is converted to a format that can be played by the Instrument and added to the end of the “(8) Memory card play-only file list”.

- File numbers are sequentially appended to files added to the “(8) Memory card play-only file list”. The largest number is 999. Further addition of files will not be possible after number 999 is assigned.

### **IMPORTANT!**

- The above step performs a data conversion process. Depending on the size and format of the WAVE file, it may take some time to complete. Perform this operation when you have enough time to wait for the process to complete.
- A name is automatically assigned to the audio file based on the first 12 characters of the WAVE file name. However, any character that is not included in the table below is replaced automatically by an under bar (\_).

|   |   |   |    |   |   |   |   |   |   |
|---|---|---|----|---|---|---|---|---|---|
| ! | " | # | \$ | % | & | ' | ( | ) |   |
| * | + | , | -  | . | / | 0 | 1 | 2 | 3 |
| 4 | 5 | 6 | 7  | 8 | 9 | : | ; | < | = |
| > | ? | @ | A  | B | C | D | E | F | G |
| H | I | J | K  | L | M | N | O | P | Q |
| R | S | T | U  | V | W | X | Y | Z | [ |
| \ | ] | ^ | _  | ` | a | b | c | d | e |
| f | g | h | i  | j | k | l | m | n | o |
| p | q | r | s  | t | u | v | w | x | y |
| z | { |   | }  | ~ |   |   |   |   |   |

## Returning a File from the Memory Card Play-only File List

1. In the “(8) Memory card play-only file list”, find the file you want to return to the computer file list.
2. Drop the file into the “(6) Computer file list”.

The files you drag and drop are placed in a queue, and processed one-by-one. The returned file appears in the “(6) Computer file list” as each process is completed.

### **IMPORTANT!**

- A file returned to a computer is not the same as the original file, but rather a file that has been converted to a format that is supported for playback on the Instrument.

## Deleting a File in the Memory Card Play-only File List

1. In the “(8) Memory card play-only file list”, find the file you want to delete.
2. Drag the file from the “(8) Memory card play-only file list” and drop it into “(4) Trash”.

### **IMPORTANT!**

- Files in the “(7) Memory card record/play file list” cannot be deleted.

## **Deleting WAVE Files from a Computer**

- 1. In the “(6) Computer file list”, find the file you want to delete.**
- 2. Drag the file from the “(6) Computer file list” and drop it into “(4) Trash”.**

This performs the same operation as that performed on your operating system when you discard something with trash.

## **Renaming a WAVE File on Your Computer**

- 1. In the “(6) Computer file list”, select the file you want to rename and then double-click it.**
- 2. This will change to the file name editing mode. Enter the new name.**
- 3. After you are finished entering a name, press the [Enter] key on your computer keyboard.**

### **IMPORTANT!**

- Files in the “(7) Memory card record/play file list” and “(8) Memory card play-only file list” cannot be renamed using the above procedure. Use the Instrument file renaming function to rename these files. See the Instrument user’s guide for details about renaming files on the Instrument.

## **Canceling a Process**

**Click the “(12) Cancel button” while a process is being performed. This will cause a confirmation dialog box to appear. Click the [Yes] button to confirm you want to cancel.**

This will cancel the ongoing process and also discard any files in the process queue.

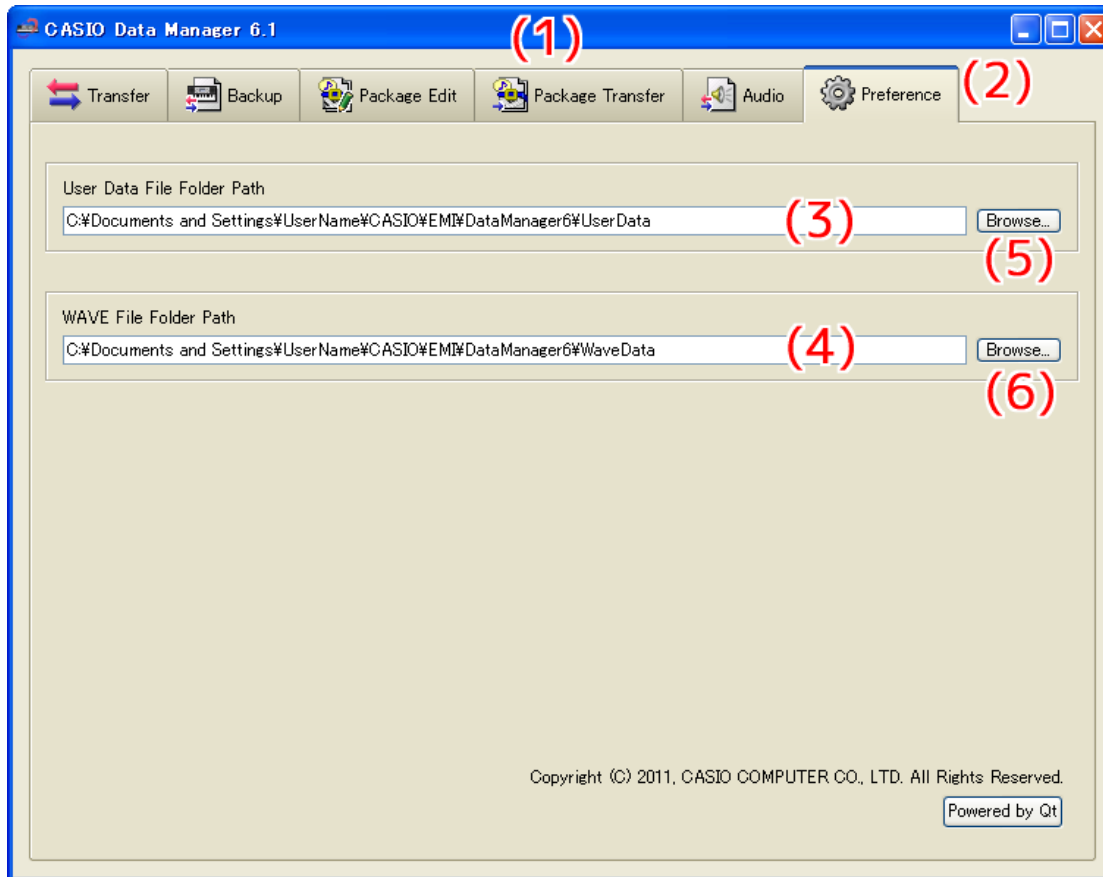
# Preference Mode

## What you can do in this mode...

View and configure the storage folders for the files used by Data Manager.

## Screen Content

- Examples show Windows XP screen shots.



### (1) Title bar

Click the close (x) button on the right end of the title bar to exit Data Manager. “<Disconnected>” is displayed in the title bar when there is no connection between the computer and Instrument.

### (2) Mode tabs

Select the tab for the mode you want to use. For details about each mode, see the sections of this manual that cover them.

### (3) User data file folder path

Shows the path to the user data file and package file storage folder. The files in this folder are displayed in the computer file list in the transfer, backup, package edit, and package transfer modes.

### (4) WAVE file folder path

Shows the path to the WAVE file storage folder. The files in this folder are displayed in the computer file list in the audio mode.

### (5) User data file folder path browse button

Displays a dialog box for specifying the path to the user data file and package file storage folder.

### (6) WAVE file folder path browse button

Displays a dialog box for specifying the path to the WAVE file storage folder.

## Using the Preference Mode

### Specifying the User Data and Package File Storage Folder

1. Click the “(5) User data file folder path browse button”.
2. On the select folder dialog box that appears, specify the storage folder.

### Specifying the WAVE File Storage Folder

1. Click the “(6) WAVE file folder path browse button”.
2. On the select folder dialog box that appears, specify the storage folder.

# Other Operations

## Using a Memory Card to Transfer Data between the Instrument and a Computer

User data files and backup files that have been saved to a memory card can be copied to the user data folder (page 27). This will make the files available to Data Manager. Also, user data files and backup files that have been saved from the Instrument to a computer using Data Manager can be copied to a memory card. Then the memory card can be loaded into the Instrument's card slot. This will allow direct access to the files by the Instrument.

### Important!

- Use a memory card that has been formatted on the Instrument.
- Package files cannot be used directly by the Instrument.
- If a user data file name on the memory card is longer than eight characters (excluding the file name extension), the Instrument will display a different file name. Change the file name so it is less than eight characters long.
- The Instrument cannot display file name characters other than those shown in the table below. Change the file name so it contains only the allowable characters shown below.

|   |   |   |   |   |   |    |   |   |   |
|---|---|---|---|---|---|----|---|---|---|
| 0 | 1 | 2 | 3 | 4 | 5 | 6  | 7 | 8 | 9 |
| A | B | C | D | E | F | G  | H | I | J |
| K | L | M | N | O | P | Q  | R | S | T |
| U | V | W | X | Y | Z | \$ | & | _ | ' |
| ( | ) | - | ^ | { | } | @  | ~ | ` |   |

\* Lower case characters are allowed, but the Instrument does not distinguish between upper case and lower case.

## Copying Files in the User Data File Folder to a Memory Card









The files displayed in the computer list in a mode can be dragged outside of the data manager window. Dragging a file from the computer list and dropping it into the MUSICDAT folder of a memory card will copy the file to the memory card.

## Copying a File from a Folder on Your Computer to the User Data File Folder

A file in a folder outside of Data Manager can be dragged to the computer list in a mode and dropped into the list. To copy a user data file stored to a memory card by the Instrument to the Data Manager user data file folder (page 27), open the memory card MUSICDAT folder and then drag the file you want to copy to the Data Manager computer list.

- Note that you will not be able to copy a file if it has a file name extension that is not supported by Data Manager.

# User Data Reference

|                | Icon                                                                                | File name extension | Data Type                | Delete        | Remarks                                                                                                                                                               |
|----------------|-------------------------------------------------------------------------------------|---------------------|--------------------------|---------------|-----------------------------------------------------------------------------------------------------------------------------------------------------------------------|
| Tone           |    | .TN7                | User Tones               | Not supported | –                                                                                                                                                                     |
| Drawbar Organ  |    | .DB7                | User Drawbar Organ Tones | Not supported | Can be used by models specified as “Drawbar Organ Models” on the “Data Manager 6.1 Compatible Model List”.                                                            |
| DSP            |    | .DS7                | User DSPs                | Not supported | –                                                                                                                                                                     |
| Rhythm         |    | .AC7, .Z00, .CKF    | User Rhythms             | Supported     | See “Rhythm Data Notes”.                                                                                                                                              |
| Scale Memory   |    | .CSD                | User Scale Memory        | Not supported | Can be used by models specified as “Oriental Music Models” on the “Data Manager 6.1 Compatible Model List”.                                                           |
| Song Sequencer |  | .CMS                | Song Sequencer           | Supported     | Total Song Sequencer area memory is limited. Certain Instrument conditions can make transfer impossible.                                                              |
| Music Preset   |  | .MPS                | User Music Presets       | Supported     | Total Music Preset area memory is limited. Certain Instrument conditions can make transfer impossible.                                                                |
| Registration   |  | .RM7                | Registration             | Not supported | There may be no inter-compatibility between two Instruments with different model names. For details, see the separate “CASIO Electronic Keyboard Data Compatibility”. |

## Rhythm Data Notes

- Data Manager can be used to transfer rhythm data files of older models to the Instrument. Supported rhythm data files are those with the following file name extensions: “.AC7”, “.Z00”, “.CKF”.
- For details of the older models whose data is supported, see “Connecting to a Computer” in the Instruments User’s Guide.
- Rhythm data files that are larger than approximately 32 Kbytes cannot be transferred to the Instrument.

# Error Messages

Operation errors, Instrument status problems, Data Manager operating environment problems, and other factors can cause error messages to appear during operation. Look up the error message in the list below and perform the required action as noted.

| Message             | Cause                                                       | Required Action                                                                                                                                                                                                                                                                                                                                                                                                                                                                                                                                                                                                                                                                                                                                                                                                                                                                                                                                                                                      |
|---------------------|-------------------------------------------------------------|------------------------------------------------------------------------------------------------------------------------------------------------------------------------------------------------------------------------------------------------------------------------------------------------------------------------------------------------------------------------------------------------------------------------------------------------------------------------------------------------------------------------------------------------------------------------------------------------------------------------------------------------------------------------------------------------------------------------------------------------------------------------------------------------------------------------------------------------------------------------------------------------------------------------------------------------------------------------------------------------------|
| Already Running     | A different instance of Data Manager is already running.    | Use the already running instance of Data Manager.                                                                                                                                                                                                                                                                                                                                                                                                                                                                                                                                                                                                                                                                                                                                                                                                                                                                                                                                                    |
| Communication Error | An error occurred during communication with the Instrument. | <ul style="list-style-type: none"> <li>• Check the connection between the computer and Instrument.</li> <li>• If another application is running, exit it.</li> <li>• On the Instrument, select the rhythm mode.</li> <li>• Make sure there is only one Instrument connected to the computer.</li> <li>• Do not perform any keyboard operations while data communication is in progress.</li> <li>• If you are connected via a USB hub or extension cable, change to a direct connection.</li> <li>• If the above actions do not resolve the problem, try turning the Instrument off and then back on again. Also try restarting Data Manager.</li> </ul>                                                                                                                                                                                                                                                                                                                                             |
| File Read Error     | An error occurred during a file or folder read operation.   | <ul style="list-style-type: none"> <li>• Check to make sure the file or folder you are trying to read actually exists.</li> <li>• Check to make sure the file or folder you are trying to read is readable.</li> <li>• Check if the file is being used by another application.</li> <li>• Check to make sure that the paths to the user data file folder and WAVE file folder do not contain any illegal characters.</li> <li>• If either path contains illegal characters, change the user data file folder or WAVE file folder to a folder whose path is made up only of supported single-byte alphanumeric characters.</li> </ul>                                                                                                                                                                                                                                                                                                                                                                 |
| File Write Error    | An error occurred during a file or folder write operation.  | <ul style="list-style-type: none"> <li>• Check to make sure the location where you are trying to create the file or folder actually exists.</li> <li>• Check to make sure the file or folder you are trying to write to actually exists.</li> <li>• Check to make sure the file or folder you are trying to write to is writable.</li> <li>• If you are trying to write to a memory card, check to make sure that its protect switch is not in the write protect position.</li> <li>• Check if the file is being used by another application.</li> <li>• Check to make sure that available computer or memory card memory space is sufficient.</li> <li>• Check to make sure that the paths to the user data file folder and WAVE file folder do not contain any illegal characters.</li> <li>• If either path contains illegal characters, change the user data file folder or WAVE file folder to a folder whose path is made up only of supported single-byte alphanumeric characters.</li> </ul> |

| Message                    | Cause                                                                                                                            | Required Action                                                                                                                                                                                                                                                                                                                                                                                                                                                                                                                                                                                                                         |
|----------------------------|----------------------------------------------------------------------------------------------------------------------------------|-----------------------------------------------------------------------------------------------------------------------------------------------------------------------------------------------------------------------------------------------------------------------------------------------------------------------------------------------------------------------------------------------------------------------------------------------------------------------------------------------------------------------------------------------------------------------------------------------------------------------------------------|
| File Format Error          | The format of the file is not supported by Data Manager.                                                                         | The file is not supported by Data Manager. Use a different file.                                                                                                                                                                                                                                                                                                                                                                                                                                                                                                                                                                        |
|                            | The file is corrupted.                                                                                                           | The file is unusable. If the same data is still available on the Instrument, re-save the data and use it.                                                                                                                                                                                                                                                                                                                                                                                                                                                                                                                               |
|                            | The file is not compatible with the destination Instrument.                                                                      | Use a file that is compatible with the destination Instrument. A file that was created on a model that is different from the destination Instrument may not be compatible, even if it has a file name extension that is supported by the destination Instrument. For information about file compatibility between different Instrument models, see the separate "CASIO Electronic Keyboard Data Compatibility".                                                                                                                                                                                                                         |
| Memory Full                | User data memory is full.                                                                                                        | <ul style="list-style-type: none"> <li>• If the message appears in the package edit mode<br/>Check if the selected data type when the error appeared was "Song Sequencer" or "Music Preset". In this case, no more of the selected data type can be transferred. Delete package data you no longer need to make room for more data.</li> <li>• If the message appears in another mode (not the package edit mode)<br/>Check if the selected data type when the error appeared was "Song Sequencer" or "Music Preset". Delete data you no longer need from among the currently selected data type to make room for more data.</li> </ul> |
| File Too Large             | Attempting to transfer a user data file to the Instrument or to register a package file that exceeds the maximum supported size. | The file is not supported by the Instrument. Use a different file.                                                                                                                                                                                                                                                                                                                                                                                                                                                                                                                                                                      |
| Keyboard Data Is Different | The data on the keyboard may be different from the displayed data.                                                               | Click the reload button to refresh the screen contents.                                                                                                                                                                                                                                                                                                                                                                                                                                                                                                                                                                                 |



**CASIO®**

**CASIO COMPUTER CO.,LTD.**  
6-2, Hon-machi 1-chome  
Shibuya-ku, Tokyo 151-8543, Japan

MA1202-A DM61-E-1A  
© 2012 CASIO COMPUTER CO., LTD.