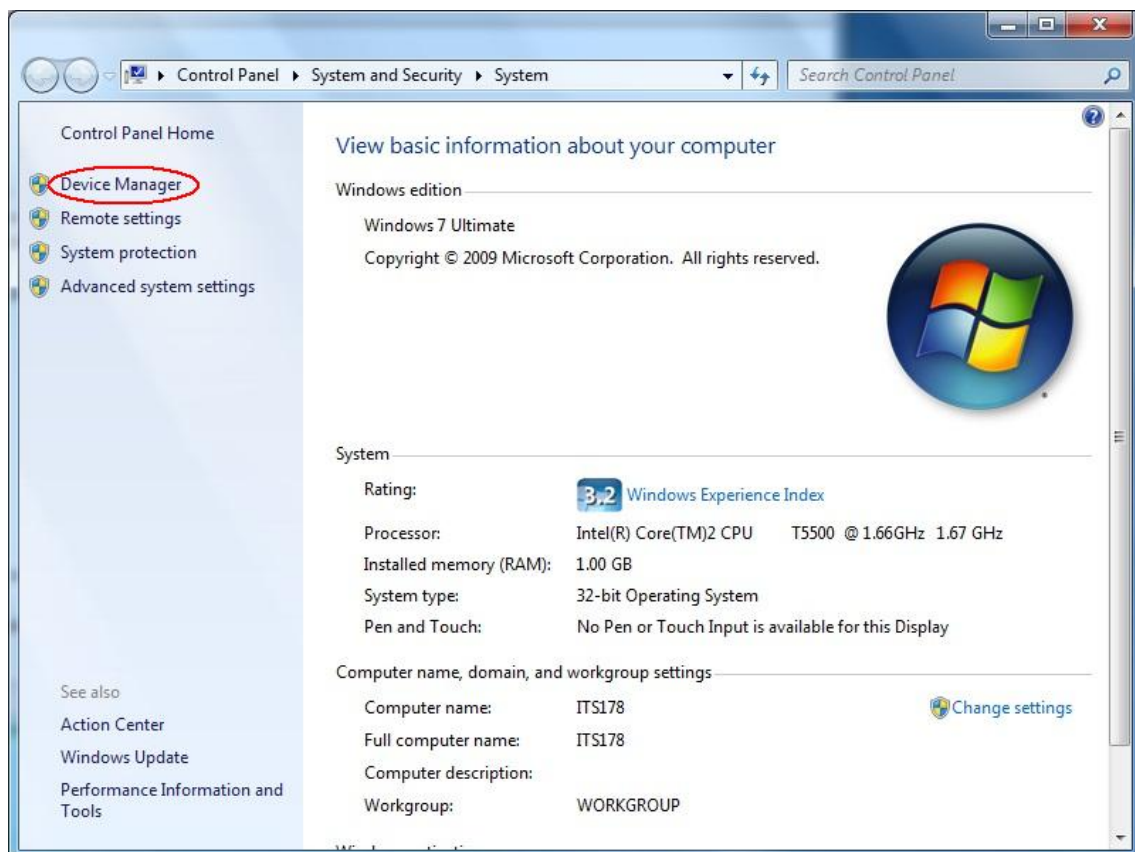


## Using the SB-88 Cable to Connect a Calculator to a Computer Running Windows 7

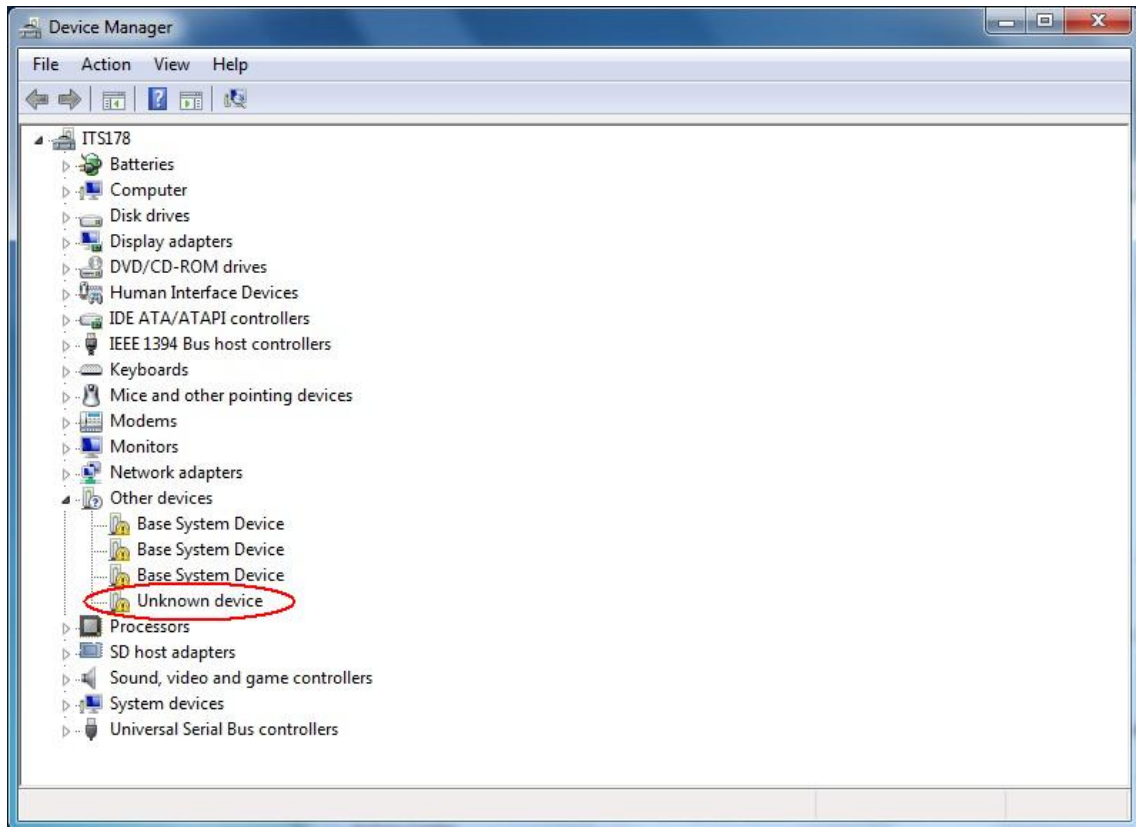
1. On the Start menu, right-click Computer and then select Properties.



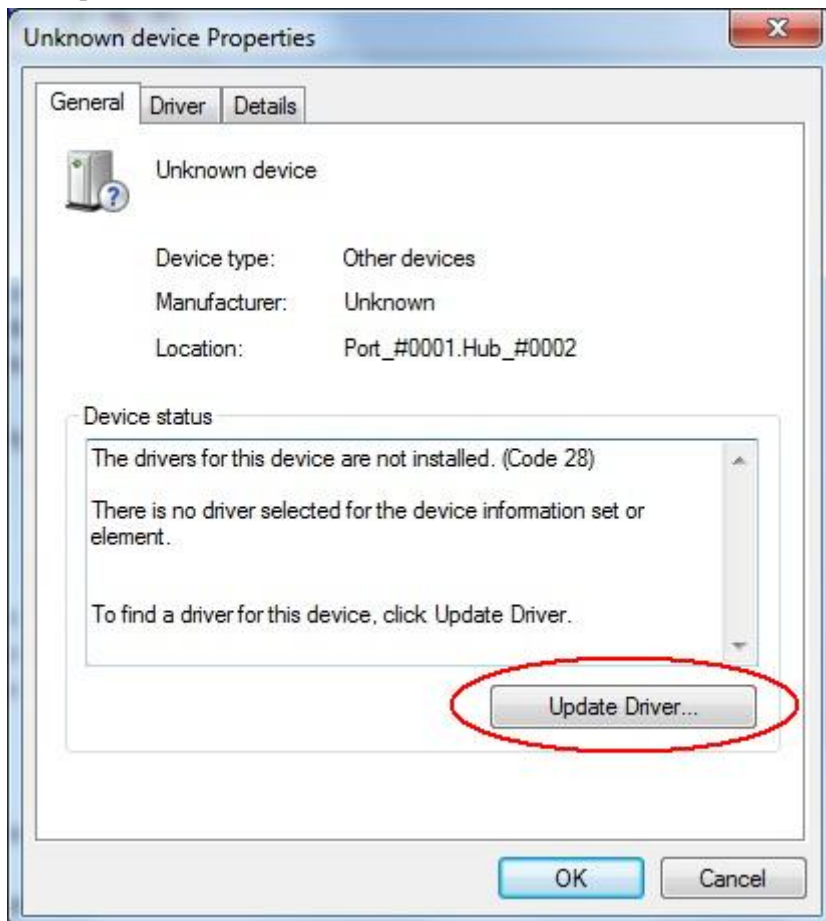
2. Select Device Manager.



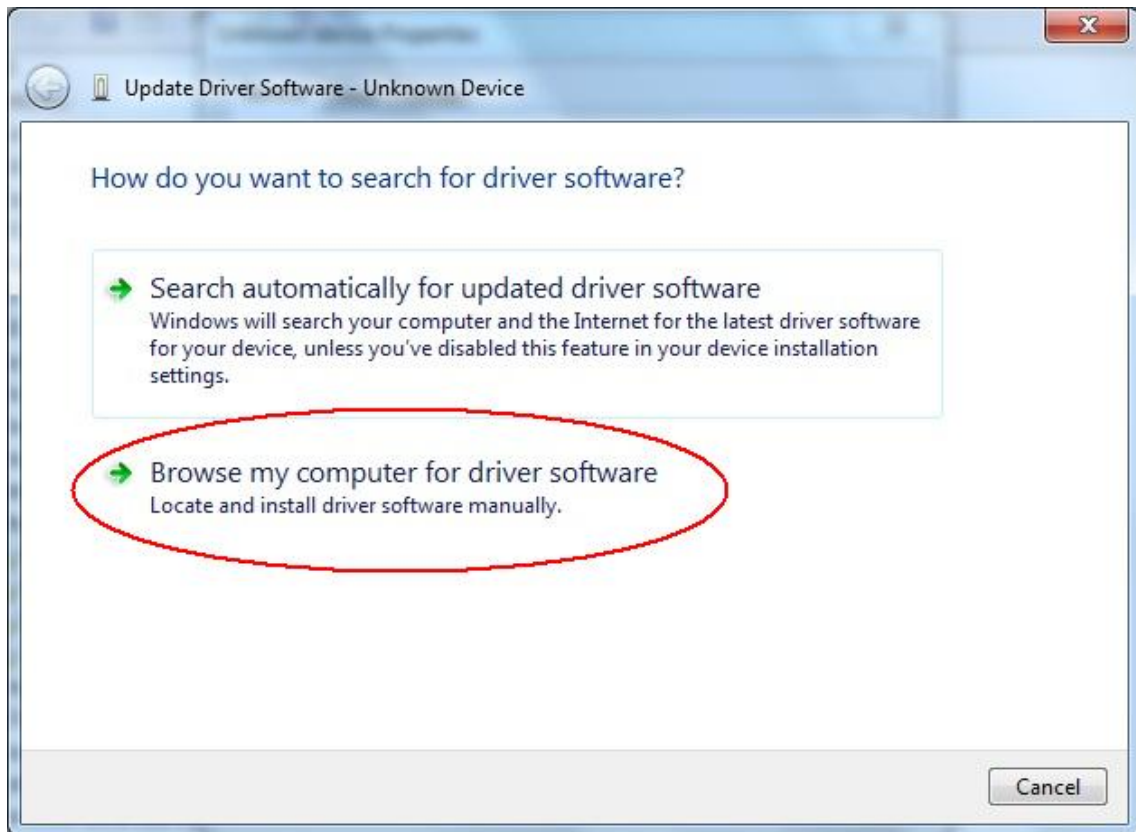
3. Confirm that Unknown Device is shown for Other Devices.



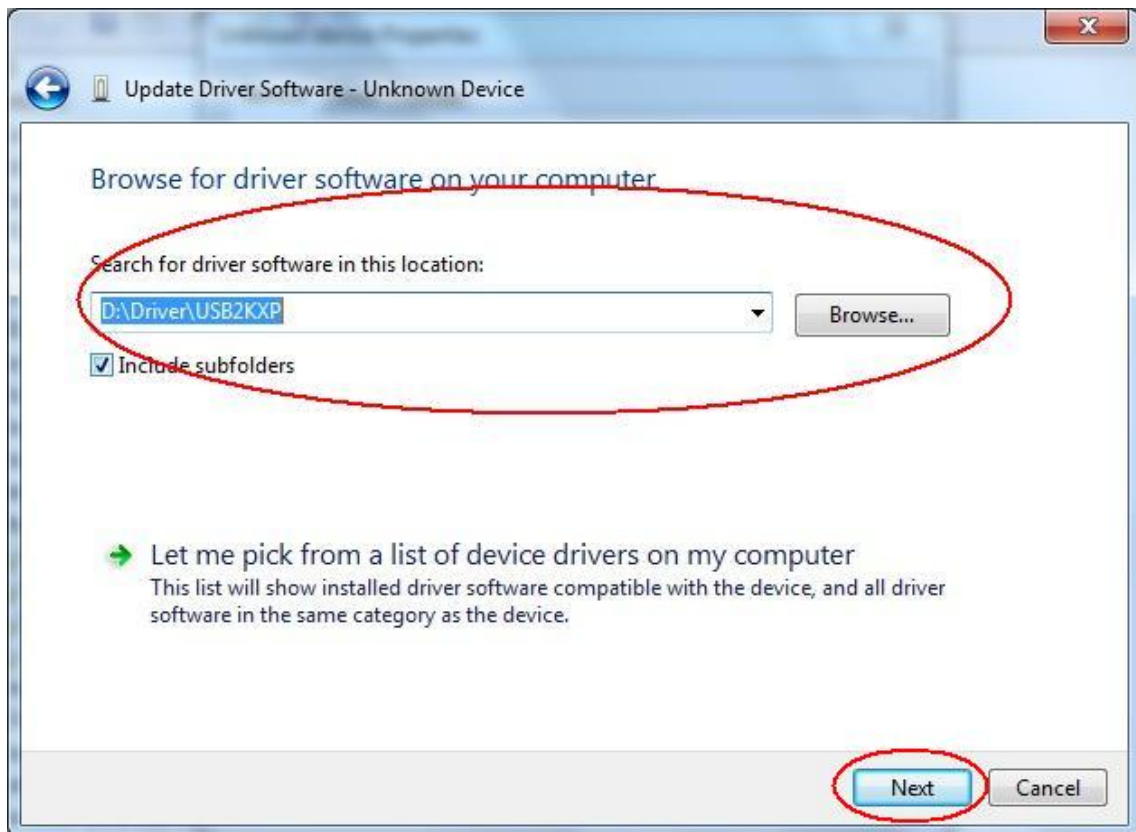
4. Right-click Unknown Device under Other Devices. After selecting Properties, select Update Driver... on the General tab.



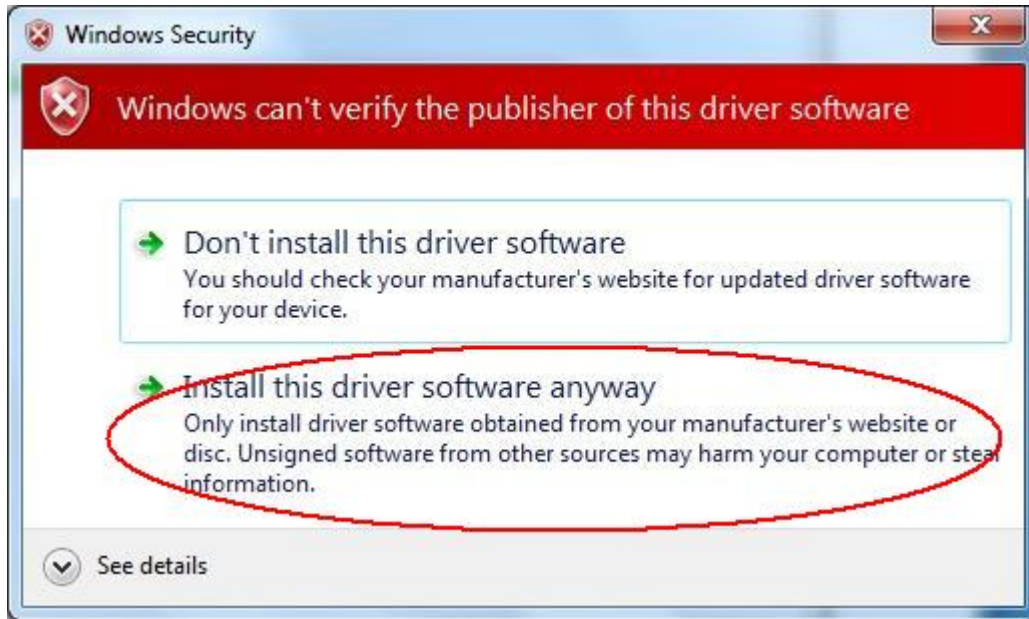
5. Select “Browse my computer for driver software”.



6. Select the driver location (for FA-124, CD driver's Driver¥USB2KXP) and then select [Next].



7. Select "Install this driver software anyway".



8. This completes driver installation. You now can use the SB-88 cable to connect the calculator to your computer.

