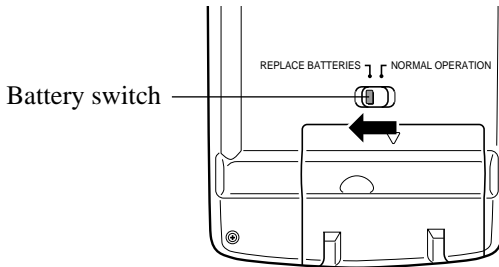


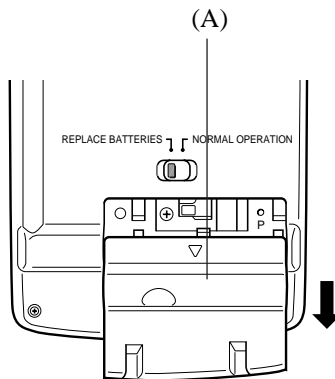
## Before using the PV-100/PV-200 for the first time...

Use the following procedure to load batteries before using it for the first time.

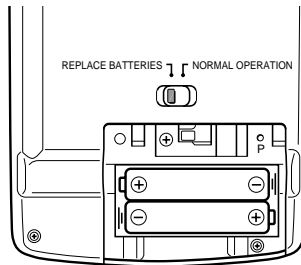
1. Slide the battery switch on the back of the PV Unit to the REPLACE BATTERIES position.



2. While pressing at the point marked (A) in the illustration, slide the battery compartment cover in the direction indicated by the arrow to remove it.



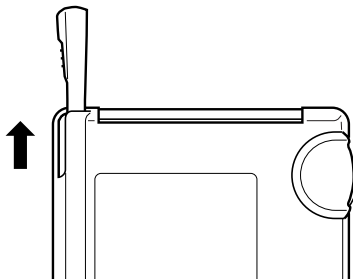
- 
3. Load two new batteries, making sure that their positive (+) and negative (-) ends are facing in the proper directions.



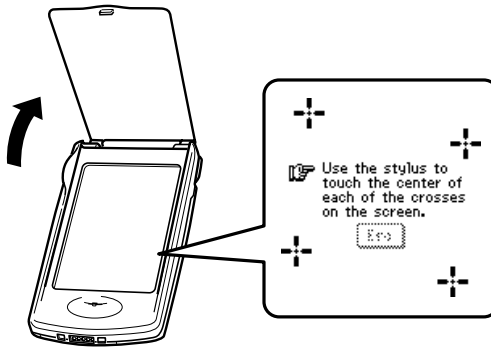
4. Taking care not to damage its tabs, replace the battery compartment cover back onto the PV Unit.
5. Slide the battery switch back to the NORMAL OPERATION position.

**Important!**

- Always make sure the battery switch is in the NORMAL OPERATION position at all times, except when loading batteries.
  - See “To replace the batteries” on page 16 for details on replacing batteries.
6. Remove the stylus from the PV Unit.
  - Pull the stylus straight out in the direction indicated by the arrow.



- 
7. Open the cover and touch the screen with the stylus to turn on power.



- If the above does not appear on the display, remove the batteries and then reload them into the PV Unit, making sure you follow proper procedures. If this does not solve the problem, refer to “Troubleshooting” on page 182.
8. Tap the center of each of the four cross marks as they appear on the screen.
    - The contrast adjustment screen appears next.
  9. Tap ◀ or ▶ to adjust the contrast of the display, and then tap **OK**.
    - This causes the system language selection screen to appear.
  10. Tap the button next to the language you want to select as the system language, and then tap **Set**.
  11. In response to the message that appears (**Check your home time setting and correct it if necessary!**), tap **OK** to change to the pop up tool screen.
  12. Check the time setting and correct it if necessary (page 156).

---

## About the EL backlight (PV-200 only)

- The PV-200 is equipped with an EL backlight that allows easy viewing of display contents in a theater, or anywhere else where lighting is dim.
- Note, however, that frequent or extended use of the EL backlight shortens battery life.

The following shows how backlight use affects battery life under controlled test conditions\*.

<b>Backlight Operation</b>	<b>Battery Life</b>
3 minutes per hour	Approximately 60 hours
15 minutes per hour	Approximately 30 hours

### \* Test Conditions

- “Battery Life” is the number of hours before battery failure when the unit is left on (5 minutes of a processing operation and 55 minutes of continuous display only (no processing operation) per hour in the Contacts Mode, plus the backlight operation described below). The above values assume ambient temperature of 20 C, starting with a fresh set of new batteries.
- “Backlight Operation” is the number of minutes the backlight is turned on per hour during the display only (no processing operation) period.
- Be sure to use alkaline batteries. Manganese batteries provide very short battery life.