

Printer Driver CASIO KL16H_EN

For Windows User's Guide

A printer driver is printer control software that makes it possible to print text and graphics displayed by your computer.

You need to install this printer driver on your computer when you want to print from an application on a KL-G2 printer and to use CASIO label printing software (BA-300).

Be sure to keep all user documentation handy for future reference.

Configuring Advanced
Printer Driver Settings



Deleting or
Renaming a Printer



Printing a Tape from an
Application



Important!

The copyright of this manual and rights related to the software all revert to CASIO COMPUTER CO., LTD.

- Microsoft, Windows, Excel, and PowerPoint are registered trademarks or trademarks of Microsoft Corporation of the United States in the United States and other countries.
- Other company names and product names used herein are trademarks or registered trademarks of others. Note that TM and ® marks are not used within the text of this manual.
- For operation procedures and other information about Windows and other applications, refer to the user documentation that comes with them.
- Except as required for proper use or for creating backup copies, any reproduction of this manual and/or the program, either in part or in their entirety, is strictly forbidden without the express written permission of CASIO COMPUTER CO., LTD.

© 2017 CASIO COMPUTER CO., LTD.

Precautions when Printing

- Avoid using the printer in any location where any of the following is present: exposure to direct sunlight, high humidity, static electric charge, extreme temperature fluctuations, extreme temperatures. The operating temperature range of the printer is: 10°C to 35°C (50°F to 95°F).
- Do not disconnect the AC adaptor or USB cable from the printer while printing is in progress.
- Before starting a print operation, check to make sure that there is enough tape remaining in the Nameland tape cartridge you are using. Repeatedly performing the cut operation when there is no tape loaded in the printer can lead to damage.
- Be sure to remove any tape residue or other foreign matter that may be present on the printer's rubber rollers.

- Do not stick your fingers into the cutter or touch it with your hand. Doing so creates the risk of personal injury. It also can cause malfunction of the printer.
- Do not allow paper clips or pins to get into the printer.
- Do not subject the printer to strong impact.
- Do not forcibly pull tape out of or push it back into the printer.
- Using the printer in a location exposed to strong direct sunlight can cause malfunction of the printer's internal light sensor, resulting in display of error messages.

Introduction

Before using this driver, be sure to read the contents this manual and ensure that you use the driver correctly. Also, keep this manual in a safe place for future reference.

Precautions when Using This Manual

- CASIO COMPUTER CO., LTD. shall not be held liable for any damages or losses suffered by you or any third party due to the use of the examples presented in this manual.
- Any copying of the contents of this User's Guide, either in part or its entirety, is forbidden. Except for your own personal use, any other use of the contents of this manual without the permission of CASIO COMPUTER CO., LTD. is prohibited under copyright laws.
- The specifications of the printer driver and the contents of this manual are subject to change without notice.
- Note that example printouts, display screens, and other details may differ somewhat from that of the actual printer.

- For information about installing the printer driver, refer to the user documentation that comes with your printer.
- This printer driver is designed to operate on a computer running Windows 10, Widows 8.1, and Windows 7 SP1.
- Certain computer configurations (CPU, hard disk capacity, memory capacity, etc.) may make normal operation of this printer driver impossible.

Contents

Important!.....	1
Precautions when Printing	1
Introduction	2
Precautions when Using This Manual	2
Supported Printer Models.....	4
Using This Manual.....	4
About this manual	4
Conventions Used in This Manual.....	5
What you can do with this printer driver	6
Advanced Printer Driver Settings	7
Displaying Printer Driver Print Settings	7
Displaying Properties from an Application	8
Printer Driver Setting Items	8
Deleting a Printer.....	15
Renaming a Printer.....	15

Printing a Tape from an Application	16
Printing from Microsoft Word	16
■ Header and Footer Settings.....	18
■ Margin Settings	19
Printing from Microsoft Excel	20
■ Header and Footer Settings.....	22
Printing from Microsoft PowerPoint.....	22
Printing from Paint.....	23
Error Messages	25

Supported Printer Models

This printer driver can be used for tape printing on the printer models below (as of February 2017).

KL-G2

Using This Manual

About this manual

■ This manual does not explain how to perform Windows operations.

This publication is the user's manual for the printer driver of the CASIO KL-G2 printer. This printer driver can run under Windows 10, Windows 8.1, and Windows 7 SP1 (hereinafter referred to as "Windows"). This manual does not explain operations of Windows itself.

This manual was written for users of the printer driver who are at least familiar with the basic Windows operations below.

- Click, double-click right-click, drag, drag and drop, and other mouse operations
- Menu operations with the mouse
- Text input with the keyboard
- Standard Windows window operations

Refer to the user documentation that came with your computer or applications for details about these basic Windows operations and application operations.

■ Terms Used in This Manual

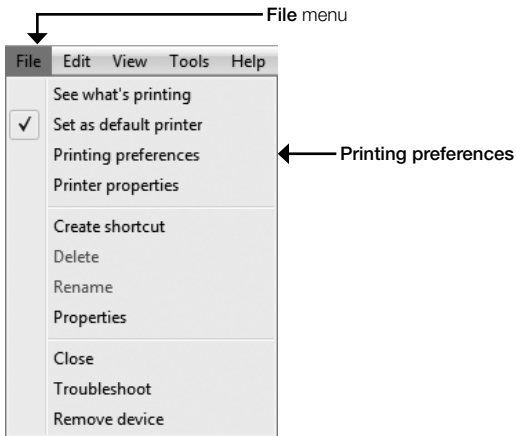
In this manual, the term Printer refers to the CASIO KL-G2 printer.

Conventions Used in This Manual

■ Menu and Button Operations

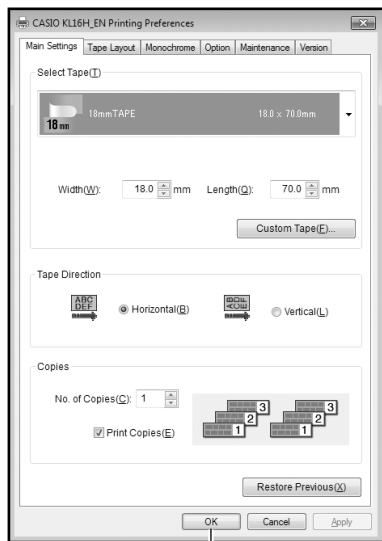
All of the operations in this manual are shown as being performed with your computer's mouse.

- Menu and command operations are indicated as shown below.



On the **File** menu, click **Printing preferences**.

- Dialog box buttons are indicated as shown below.



OK

Click OK.

■ Display Screens

- The screenshots in this manual are Windows 7 SP1. The screens produced by other operating systems may be different from those shown here.

What you can do with this printer driver

- This printer driver makes it possible for you to print data created with the applications you normally use on your computer on your CASIO printer. You can also use it to monitor the current status of your printer. You can also print tapes without using a label printer application.

CZ-005

Plan
Specs
Marketing

- You can use your normal applications to edit special paper sizes used by the printer.



Advanced Printer Driver Settings

This section explains how to configure advanced printer driver settings.

Important!

- This setting is not required if you are using label printing software (BA-300).
- If you are using the label printing software (BA-300), select **Horizontal (B)** for the **Tape Direction** setting.

Displaying Printer Driver Print Settings

■ Windows 7 SP1

On the Windows **Start** menu, click **Devices and Printers**. Next, in the **Printers and Faxes** area, click the model you want to install. Right-click and then select **Printing preferences** from the menu that appears to display a screen for configuring printer settings.

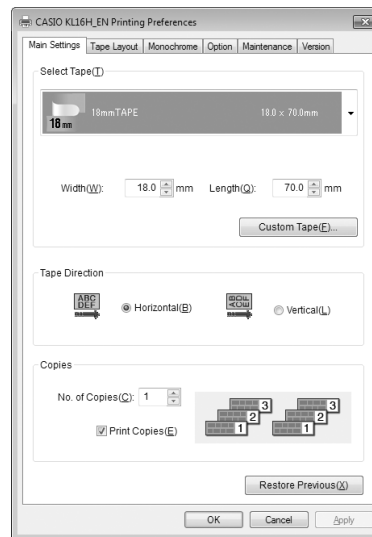
■ Windows 10

Right-click the Windows **Start** button. On the menu that appears, click **Control Panel**. Open **Devices and Printers**. Next, in the **Printers** area, click the model you want to install. Right-click and then select **Printing preferences** from the menu that appears to display a screen for configuring printer settings.

■ Windows 8.1

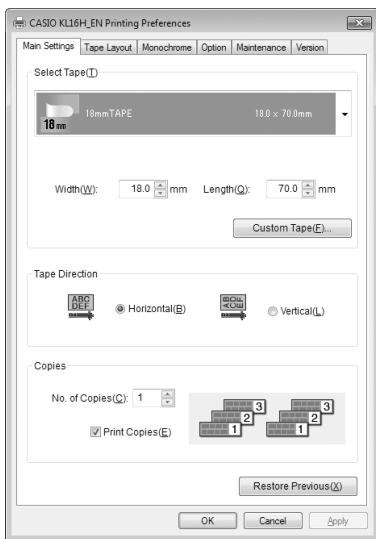
From the desktop, display the charm bar, and then click in the following sequence: **Settings - Control Panel - View devices and printers**. Next, click the printer model you want to install.

Right-click and then select **Printing preferences** from the menu that appears to display a screen for configuring printer settings.



Displaying Properties from an Application

- See "Printing a Tape from an Application" (page 16) for examples that show how to configure settings from a variety of different applications
- 1 On the **File** menu of the application you are running, click **Print**.
 - 2 On the **Print** dialog box, use **Select Printer** to select the printer you want to install, and then click **Printer Properties** or **Advanced**.
 - Depending on the button you clicked, this displays the **Properties** or **Printing Preferences** screen.



- In addition, you could also display properties with **File - Page Setup**, etc.

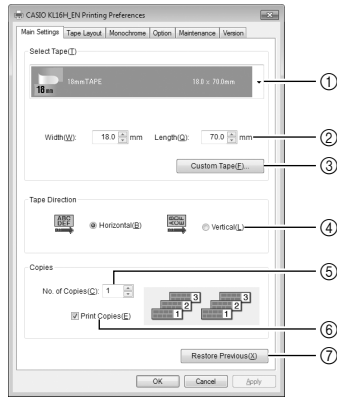
Printer Driver Setting Items

You can configure function settings to suit the need of how you are using the printer driver. This section explains how to configure the settings on the tabs displayed by **Properties** and **Printing Preferences**. A list of tabs is shown below.

- **Main Settings**
- **Tape Layout**
- **Monochrome**
- **Option**
- **Maintenance**
- **Version**

■ Main Settings

Use this table to configure the following basic settings: **Select Tape**, **Tape Direction**, **Copies**.



⑤	No. of Copies (C)	Specifies the number of copies to be printed.
⑥	Print Copies (E)	When printing multiple copies of a document, select this check box to print one complete copy of the document, following by the next complete copy, etc.
⑦	Restore Previous (X)	Restores settings to what they were before you changed them.

Important!

Specifying Paper with **Select Tape**

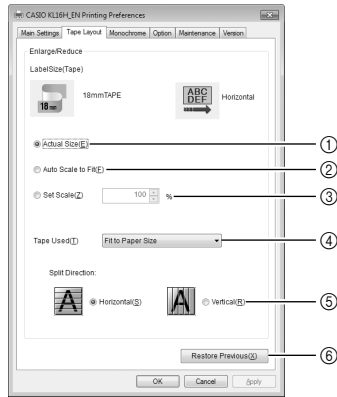
The paper size specified by the application and the paper size specified by **Select Tape (T)** must be identical. Abnormal printing may result if the sizes are different.

- See "Printing a Tape from an Application" (page 16) for a variety of examples of settings from applications



①	Select Tape (T)	Specifies the tape to be used.
②	Width (W), Length (L)	Changes the width and length of the specified tape. Note that changes to this setting are not saved. To add a new tape size, use Custom Tape to register the new tape size.
③	Custom Tape (F)...	Displays a dialog box for registering a custom tape. You can create a new size tape or add to the Select Tape list (page 14).
④	Horizontal (B), Vertical (L)	Specifies the page orientation of the selected tape. However, note that even if you change the page orientation, the actual printing direction is fixed, and orientation of the text and graphics within the print area is does not change.

■ Tape Layout

The **Enlarge/Reduce** settings on this tab are used when actually printing data created with an application onto tape.



①	Actual Size (E)	Prints the actual Label Size (100%) to the Tape Used . If the Label Size is larger than the Tape Used , the label will be printed on multiple pieces of tape.
②	Auto Scale to Fit (F)	Automatically enlarges or reduces the Label Size to fit the Tape Used .
③	Set Scale (Z)	Allows manual specification of enlargement or reduction of the Label Size for printing to the Tape Used . You can specify a factor in the range of 1% to 400% for this setting. If this setting results in the Label Size being larger than the Tape Used , the label will be printed on multiple pieces of tape.

④	Tape Used (T)	<p>Specifies the tape loaded in the printer, which will be used for printing.</p> <ul style="list-style-type: none"> ● Fit to Paper Size Selected Prints based on the paper size setting of the application. A tape error will occur if the tape size loaded in the printer does not match the size specified by the application. ● Other Item Selected Prints in accordance with the tape specified here, regardless of the paper size setting of the application. A tape error will occur if the tape size loaded in the printer does not match the size specified here.
⑤	Split Direction	<p>If the Label Size is larger than the Tape Used, the label will be printed on multiple pieces of tape. This setting allows specification of the split direction (Horizontal (S) or Vertical (R)). When Horizontal is specified, printing is performed with vertical page orientation, so the tapes need to be assembled vertically.</p> <p style="text-align: center;">  <input checked="" type="radio"/> Horizontal(S)  <input type="radio"/> Vertical(R) </p>
⑥	Restore Previous (X)	Restores settings to what they were before you changed them.

Important!

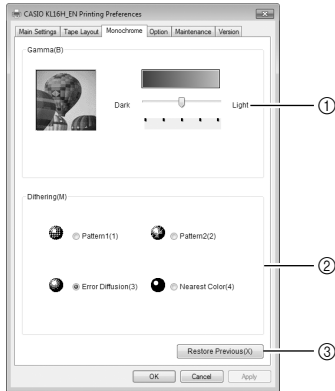
Specifying **Tape Used**

Load tape into the printer that matches the **Tape Used** setting, or specify the tape size loaded in the printer for the **Tape Used** setting. Printing will not be possible (trying to print will display an error message) if the **Tape Used** setting and the size of the tape loaded in the printer do not match.

■ Monochrome

The **Gamma** and **Dithering** settings on this tab are used when printing color images, etc.

(Color images are printed in monochrome.)



①	Gamma (B)	Adjusts brightness when printing images, etc.
②	Dithering (M)	Adjusts quality when printing images, etc. <ul style="list-style-type: none"> ● Pattern1 (1) Prints in accordance with a fixed pattern. ● Pattern2 (2) Prints in accordance with a fixed pattern that provides more detail than Pattern1. ● Error Diffusion (3) Prints in accordance with a random pattern that is not as noticeable as Pattern. ● Nearest Color (4) Prints in pure black and white.
③	Restore Previous (X)	Restores settings to what they were before you changed them.

Important!

Gamma changes the gradation of images and other print objects. It is different from actual print density. To change the actual print density, go to the **Option** tab and adjust **Print Density (D)**.

• How Pattern, Error Diffusion, and Nearest Color Differ from Each Other

Both the **Pattern** and **Error Diffusion** monochrome settings make dark colors blacker and light colors lighter, producing the same effect as that when a color photograph is copied on a color copy machine. However, compared with **Pattern**, **Error Diffusion** produces better looking printing results. Conversely, **Nearest Color** print all colors within a specific value range as black and all light colors as white, resulting in strong contrast.

Pattern1



Pattern2



Error Diffusion

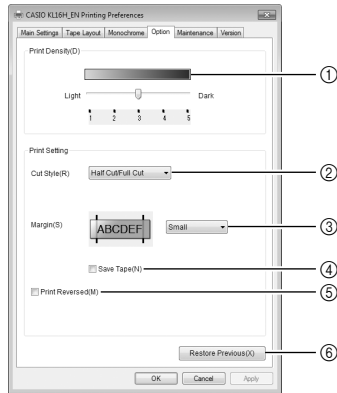


Nearest Color



■ Option

Use the **Option** tab to configure **Print Density** and **Print Setting** settings.

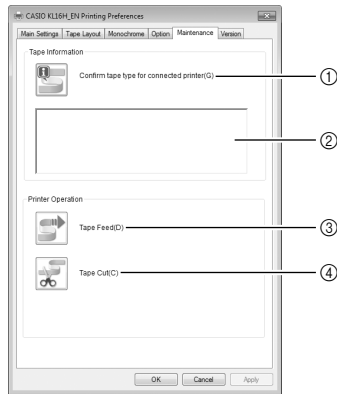


①	Print Density (D)	Adjusts the print density. Adjust this setting when printing results are smudged or too dense. Light: Makes printing lighter. Dark: Makes printing darker.
②	Cut Style (R)	Specifies the tape cut style. No Cut: Auto cut disabled. Full Cut Only: Performs a full cut after each tape is printed. Half Cut/Full Cut: Performs a half cut after each tape is printed, and a full cut after all of the tapes are printed.
③	Margin (S)	Specifies the length of leading and trailing margins. Small: Margins of approximately 3 mm each. Medium: Margins of approximately 10 mm each. Large: Margins of approximately 21 mm each.

④	Save Tape (M)	Select this check box to eliminate blank space between printing and the end of a tape. Clearing this check box outputs a tape of the length specified by Select Tape . Any space between the printing and the end of the tape is left blank. <ul style="list-style-type: none"> • Check box selected <div data-bbox="1099 221 1262 288" style="border: 1px solid black; padding: 5px; text-align: center;">ABCDE</div> <ul style="list-style-type: none"> • Check box cleared <div data-bbox="1099 333 1345 400" style="border: 1px solid black; padding: 5px; text-align: center;">ABCDE</div>
⑤	Print Reversed (M)	Prints so characters appear normally when viewed from the back of the tape. <ul style="list-style-type: none"> • Use this setting when printing to fabric transfer tape (sold separately). This setting is not necessary when printing to iron on tape (sold separately). • Use this setting when printing to transparent tape (sold separately) which will be affixed to the back of glass or some other transparent surface.
⑥	Restore Previous (X)	Restores settings to what they were before you changed them.

■ Maintenance

Use this tab to view information about the tape loaded in the connected printer, and to perform cutting and other operations.



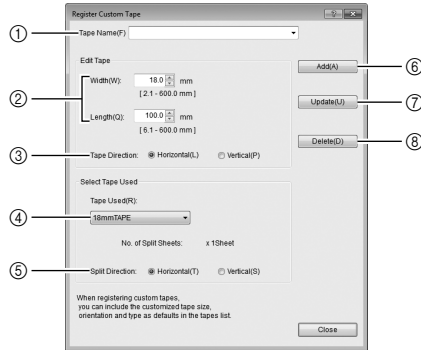
①	Confirm tape type for connected printer (G)	Click the button to the left to check the status of the tape cartridge loaded in the connected printer.
②	Tape information display area	Displays the information acquired by the operation with the ① button above. <ul style="list-style-type: none"> • Tape cartridge loaded/not loaded • Tape width
③	Tape Feed (D)	Click the button to the left to feed the tape of the connected printer.
④	Tape Cut (C)	Click the button to the left to cut the tape of the connected printer.

■ Registering a Custom Tape

You can use the settings on this screen to create a new size tape, which is added to the **Selected Tape (T)** list of the **Main Settings** screen.

You can also delete a custom tape (layout) and change its settings as required.

To display this screen, click **Custom Tape (F)...** under **Selected Tape (T)** on the **Main Settings** screen.



⑤	Split Direction Horizontal (T), Vertical (S)	Select a split direction. This setting corresponds to Split Direction on the Tape Layout screen.
⑥	Add (A)	Registers the created tape size and adds it to the Select Tape list.
⑦	Update (U)	Updates the custom tape specified by Tape Name with the current settings on the dialog box.
⑧	Delete (D)	Deletes the custom tape specified by Tape Name .

①	Tape Name (F)	Input the name you want to use for a tape you create. The name you input here will appear in the tape selection list on the Main Settings screen. To select a previously created tape, click ▾.
②	Width (W), Length (Q)	Specify the width and length of the tape you are creating.
③	Tape Direction Horizontal (L), Vertical (P)	Select the direction of the tape you are creating. This setting corresponds to Tape Direction on the Main Settings screen.
④	Tape Used (R)	Select the size of the tape to be printed to.

Deleting a Printer

- 1 On the Windows **Start** menu, click **Devices and Printers**.
 - This displays the **Devices and Printers** screen.
- 2 Select the printer you want to delete by clicking its printer name or printer icon.
- 3 While the printer is selected, right-click and then select **Remove device** from the menu that appears.
 - A **Delete print queue** option may be displayed while the printer is performing a print operation. After clicking this option, you can select the name of a printer to be deleted.
- 4 Click **Yes**.

Renaming a Printer

When you have multiple printers connected to your computer, it may be helpful if you assign printer names that show the types of tape cartridges loaded in the printers. This section explains how to rename printers.

- 1 On the Windows **Start** menu, click **Devices and Printers**.
 - This displays the **Devices and Printers** screen.
- 2 Click the printer you want to rename to select it. Next, right-click and then select **Printer Properties** from the menu that appears.
 - In this example, we will select a printer that has 18mm white tape loaded.
 - If multiple printer names are displayed, click the printer name you want to change.
- 3 Change the printer name.
 - For this example, we will change the name to **18mm Wh**.
- 4 Click **OK**.

Printing a Tape from an Application

Printing from Microsoft Word

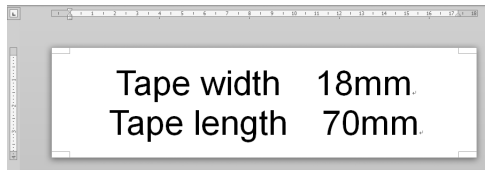
This section shows an example of how to print with Microsoft Word 2010. It shows samples of how to print by creating a tape using a format downloaded from the net, and creating a tape with a new document.

Important!

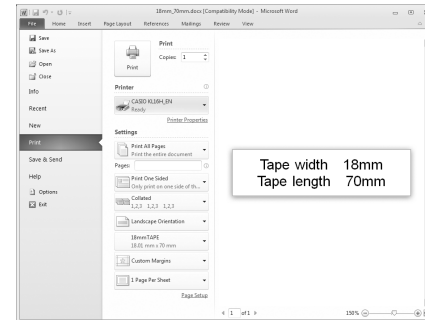
When actually printing a label, a tape cartridge of the width you specified must be loaded in the printer.

■ Using a Sample Format to Print

- 1 On the **File** tab, click **Open**. In the downloaded **Samples** folder, open **18mm_70mm.docx**.
 - This opens a pre-created label printing document.



- 2 On the **File** tab, click **Print**, and then select **CASIO KL16H_EN** for the **Printer** setting.



- 3 Click **Printer Properties**.

4 Configure settings on the Printer Properties **Main Settings** tab and **Option** tab in accordance with the page settings.

● Sample Properties Settings

Main Settings Tab

Width: 18.0mm

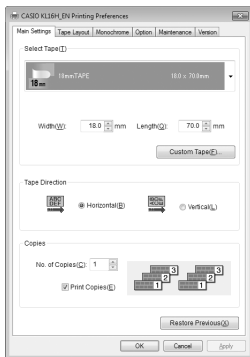
Length: 70.0mm

Tape Direction: Horizontal

Option Tab

Cut Style: Half Cut/Full Cut

Margin: Small



• The size of the margins will change in accordance with the tape type and printing direction. For more information, see "Margin Settings" (page 19).

5 After the settings are the way you want, click **OK** to return to the print screen, and then click the **Home** tab.

6 If you want to modify text, click it to make the text box editable.

7 Edit the text as required.

8 On the **File** tab, click **Print**.

9 After you are finished checking the layout on the preview image, click **Print**.

■ Printing a Newly Created Document

1 On the **File** tab, click **New**. Select a template and then click **Open**.

2 On the **File** tab, click **Print**, and then select **CASIO KL16H_EN** for the **Printer** setting.

3 Click **Printer Properties**.

4 Click the **Main Settings** tab and then specify the tape you will use.

5 Click **OK** to return to the print screen.

6 On the **File** tab, click **Print**, and then click **Page Setup**.

- For this setting, specify the same tape that you specified in step 4 above.

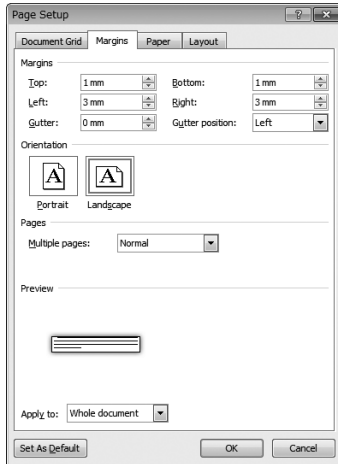
7 Click the **Paper** tab and then use **Paper Size** to specify the tape you plan to use.

8 Click the **Margins** tab.

9 Configure margin value settings.

Using **18mmTAPE** with **Small** margins configures the settings shown below.

- Horizontal
Top: 1mm **Bottom:** 1mm
Left: 3mm **Right:** 3mm
- Vertical
Top: 3mm **Bottom:** 3mm
Left: 1mm **Right:** 1mm



- The size of the margins will change in accordance with the tape type and printing direction. For more information, see "Margin Settings" (page 19).

10 After the settings are the way you want, click **OK** to return to the print screen, and then click the **Home** tab.

11 Input the text to be printed.

12 On the **File** tab, click **Print**.

13 Click **Print**.

Header and Footer Settings

When printing from Microsoft Word, you can configure header and footer settings. The print area of a tape is much more limited than that available on normal paper, so you should skip header and footer settings for tape printing. Refer to Microsoft Word help for details.

Margin Settings

The tape width and length that are specified with the printer properties are used as-is for the vertical and horizontal dimensions of an application's paper size.

The printer driver settings allow specification of the margin settings **Small**, **Medium**, and **Large**, but applications specify margin using number input.

Also, margin values depend on the width of tape being used.

- Refer to Tables 1 and 2 below when configuring margin settings.

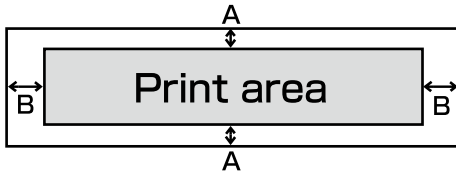


Table 1: Tape Width (6, 9, 12, 18, 24 mm) and A Value

Tape Width	A (mm)
6mm	1.00
9mm	1.00
12mm	1.00
18mm	1.00
24mm	4.00

Table 2: Tape Margin Setting and B Value

Margin Setting	B (mm)
Small	3
Medium	10
Large	19

● **Example: Setting margins for Microsoft Word**

18mmTAPE; Margin: **Small**; Tape Direction: **Horizontal**

Margin settings are as shown below when the above printer properties are configured.

Top and bottom margins (Table 1): 1 mm

Left and right margins (Table 2): 3 mm

Printing from Microsoft Excel

This section shows an example of how to print with Microsoft Excel 2010. It shows samples of how to print by creating a tape using a format downloaded from the net, and creating a tape with a new book.

Important!

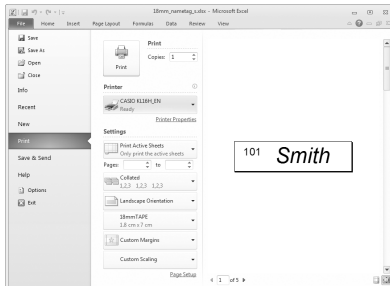
When actually printing a label, a tape cartridge of the width you specified must be loaded in the printer.

■ Using a Sample Format to Print

- 1 On the **File** tab, click **Open**. In the downloaded **Samples** folder, open **18mm_nametag_s.xlsx**.
 - This opens a pre-created label printing document.

	A	B
1	101	Smith
2	102	Jones
3	103	Taylor

- The initial default input is fictitious. Any resemblance to real persons living or dead, organizations, etc. is purely coincidental.
- 2 On the **File** tab, click **Print**, and then select **CASIO KL16H_EN** for the **Printer** setting.



- 3 Click **Printer Properties**.
- 4 Configure settings on the Printer Properties **Main Settings** tab and **Option** tab in accordance with the page settings.

● Sample Properties Settings

Main Settings Tab

Select Tape: 18mmTAPE

Width: 18.0mm

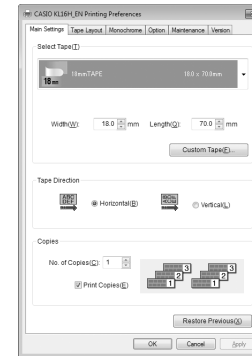
Length: 70.0mm

Tape Direction: Horizontal

Option Tab

Cut Style: Half Cut/Full Cut

Margin: Small



- The size of the margins will change in accordance with the tape type and printing direction. For more information, see "Margin Settings" (page 19).

- 5 After the settings are the way you want, click **OK** to return to the print screen, and then click the **Home** tab.
 - Edit the tape contents as required.
- 6 Select the cell you want to print and then on the **Page Layout** tab click **Print Area**. On the menu that appears, click **Set Print Area**.
 - Here, we will select cell A1 through cell B1.
- 7 On the **File** tab, click **Print**.
- 8 After you are finished checking the layout on the preview image, click **Print**.

■ Printing a Newly Created Document

- 1 On the **File** tab, click **New**. Select a template and then click **Open**.
- 2 On the **File** tab, click **Print**, and then select **CASIO KL16H_EN** for the **Printer** setting.
- 3 Click **Printer Properties**.
- 4 Use the **Main Settings** tab and **Option** tab to configure settings for the tape you will use, and then click **OK**.

● Sample Properties Settings

Main Settings Tab

Select Tape: 18mmTAPE

Tape Direction: Horizontal

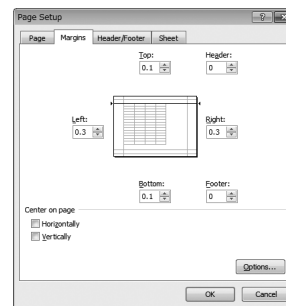
Option Tab

Margin: Small

Cut Style: Half Cut/Full Cut

- 5 When all of the settings are the way you want, click **OK** to return to the print screen.
- 6 On the print screen, click **Custom Margins** on the margins pull-down list (Initial Default: **Normal Margins**).
- 7 Click the **Margins** tab and then configure the margin value settings.
 - Margin Setting Example

Top: 0.1	Bottom: 0.1
Left: 0.3	Right: 0.3
Header: 0	
Footer: 0	



- The size of the margins will change in accordance with the tape type and printing direction. For more information, see "Margin Settings" (page 19).
- You can also configure margin and print direction settings using the **Page Setup** group on the **Page Layout** tab.

- 9 After the settings are the way you want, click **OK** to return to the print screen, and then click the **Home** tab.
- 10 Input the data to be printed.
- 11 On the **File** tab, click **Print**.
- 12 Click **Print**.

Header and Footer Settings

When printing from Microsoft Excel, you can configure header and footer settings. The print area of a tape is much more limited than that available on normal paper, so you should skip header and footer settings for tape printing. Refer to Microsoft Excel help for details.

Printing from Microsoft PowerPoint

Power Point has a function that automatically adjusts the size of the print image in accordance with the paper size. You should use this function when editing and printing. Use the procedure below for printing.

- 1 On the **File** tab, click **Print**, and then select **CASIO KL16H_EN** under **Printer**.
2. Under **Settings**, use **Slides** (Initial Default: **Full Page Slides**) to select **Scale To Fit Paper**.
 - Make sure there is a check mark to the left of **Scale To Fit Paper**.
3. Click the **Home** tab and then edit the slide text as required.
 - To adjust the slide width, go to the **Design** tab, click **Page Setup**, and then change the **Width** value.
4. After you are finished editing the data, click **Print** on the **File** tab and then check the layout on the preview screen.
 - If necessary, click **Printer Properties** and then adjust tape length and other settings.
5. Click **Print**.

Printing from Paint

Printing from Paint can be performed by creating a tape using a format downloaded from the net, and by creating a tape with new image data.

Important!

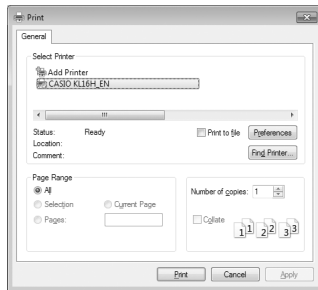
When actually printing a label, a tape cartridge of the width you specified must be loaded in the printer.

■ Using a Sample Format to Print

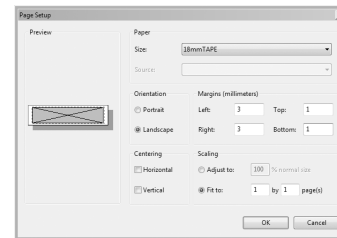
- 1 On the **File** tab, click **Open**. In the downloaded **Samples** folder, open **18mmFRAGILE.bmp**.
 - This displays a bitmap image.



- 2 Click the **Print** button. In the **Print** item area, click **Print**.
- 3 On the print dialog box that appears, use **Select Printer** to select **CASIO KL16H_EN**, and then click **Apply**.



- 4 Click **Preferences**, and then configure the print settings on the **Main Settings** tab and **Option** tab.
 - Example Printing Preferences
 - Main Settings Tab**
 - Select Tape: 18mmTAPE
 - Tape Direction: Horizontal
 - Option Tab**
 - Cut Style: Half Cut/Full Cut
 - Margin: Small
- 5 After you are finished configuring settings, click **OK** to return to the printer selection dialog box. Next, click **Apply** and then **Cancel**.
- 6 Click the **Paint** button. In the **Print** item area, click **Page Setup**.
- 7 On the **Page Setup** dialog box, configure the margin value settings.
 - Margin Setting Example
 - Left: 3 mm Top: 1 mm
 - Right: 3 mm Bottom: 1 mm



- The size of the margins will change in accordance with the tape type and printing direction. For more information, see "Margin Settings" (page 19).

- 8 When all of the settings are the way you want, click **OK**.
- 9 On the paint editing screen, edit the data.
- 10 After you are finished editing, click the **Paint** button. In the **Print** item area, click **Print**.
- 11 Click **Print**.

■ Printing a Newly Created Document

The example below shows how to create a label with the setup below on a KL-G2 Printer.

18mmTAPE

Horizontal Length: 70 mm

Margin: Medium

- 1 Click the **Paint** button and then click **New**.
- 2 Click the **Paint** button. In the **Print** item area, click **Print**.
- 3 Use **Select Printer** to select **CASIO KL16H_EN**.
- 4 Click **Preferences**.
- 5 Click the **Main Settings** tab and then specify the tape you will use.
 - Example Printing Preferences
 - Main Settings** Tab
 - Select Tape: 18mmTAPE
 - Tape Direction; Horizontal
 - Option** Tab
 - Cut Style: Medium
 - Cut Style: Half Cut/Full Cut

- 6 After you are finished configuring settings, click **OK** to return to the printer selection dialog box. Next, click **Apply** and then **Cancel**.
- 7 Click the **Paint** button. In the **Print** item area, click **Page Setup**. On the **Page Setup** dialog box that appears, configure margin value settings.
 - Margin Setting Example
 - Left:** 10 mm **Top:** 1 mm
 - Right:** 10 mm **Bottom:** 1 mm
 - The size of the margins will change in accordance with the tape type and printing direction. For more information, see "Margin Settings" (page 19).
- 8 When all of the settings are the way you want, click **OK**.
- 9 In the **Image** group of the **Home** tab, click **Resize** and then specify a value.
 - Example Settings
 - Maintain aspect ratio:** Off
 - By:** Pixels
 - Horizontal:** 400
 - Vertical:** 128
- 10 When all of the settings are the way you want, click **OK**.
- 11 On the paint editing screen, input the data you want.
- 12 After you are finished inputting data, click the **Paint** button. In the **Print** item area, click **Print**.
- 13 Click **Print**.

Error Messages

Error Message	Required Action
Check printer connection.	Check to make sure that the printer is connected to the computer. Check to make sure that printer power is turned on and then try printing again.
Printer error. Restart the printer.	Some printer abnormality occurred. Turn power off and then back on again. Next, try printing again. Confirm that the USB driver is installed correctly on the computer.
Document printing cancelled. Printing cancelled.	A print operation was cancelled.
Check printer/tape.	The printer head is overheated. Wait for a while to allow the head to cool and then try again. Check to make sure that the proper width and type of tape is loaded in the printer. Check for tape jamming inside the printer, and confirm that the tape width and type are correct, and that there is still tape left in the cartridge. The specified printer is not connected to the computer. Check the printer and try printing again. ● If the specified driver port is KL-16H-USB PORT: The specified printer is not connected to any port. Connect the printer to a computer USB port.

Error Message	Required Action
Load a tape cartridge.	There is no tape cartridge loaded. Load a new tape cartridge.
Check tape cartridge.	The wrong type of tape cartridge is loaded. Load the correct type of tape cartridge.
Check for a tape jam in the printer.	Check for tape jamming in the printer.
Close cover.	Close the printer cover.
Check printer/tape.	<p>● If the specified driver port is KL-16H-USB PORT#1_2, etc.: The specified printer is not connected to the specified port. Even if the specified printer is connected to another port, this error message will appear if it is not connected to the specified port. Connect the specified printer model to the specified port. You can check the port specification using the port tap of printer properties.</p> <p>The connected printer model is different from the specified printer model. Check the printer and try printing again.</p> <p>● If the specified driver port is KL-16H-USB PORT: This error does not occur.</p> <p>● If the specified driver port is KL-16H-USB PORT#1_2, etc.: The printer model connected to the specified port is different from the specified model. Make sure that the specified printer model is connected.</p>
No response from printer's host computer.	Appears when the connected printer is on a network. Check the print settings of the computer connected to the printer.

CASIO®

CASIO COMPUTER CO., LTD.

6-2, Hon-machi 1-chome
Shibuya-ku, Tokyo 151-8543, Japan

MO1612-A

© 2017 CASIO COMPUTER CO., LTD.