

CW-L300

CASIO®

Read this first

In addition to CW-L300 operating precautions, these instructions also include information about installing the software that comes bundled with the CW-L300 and how to connect it to your computer.

For information about using the CW-L300 and the bundled software, see printed documentation and the documentation on the CD-ROM that come with the CW-L300.

Before using the CW-L300, see the safety precautions in the CW-L300 User's Guide.

Keep these instructions in a safe place for future reference.

- CASIO COMPUTER CO., LTD. shall not be held liable for any loss or claims by you or any other person or entity that may arise through the use of this product.
- Reproduction of this manual in any form, either in part or its entirety, is forbidden without the express permission of CASIO COMPUTER CO., LTD. You are granted permission to use this software for your own personal use. Any and all other use of this software without the express permission of CASIO COMPUTER CO., LTD. is forbidden under international copyright laws.
- The contents of the manual are subject to change without notice.
- Due to the time required for printing on paper, contents of the manual may be outdated by the version of software supplied to you. Because of this, the software and the contents of the displays it produces may be different from those described in this manual, or some items described in this manual may no longer be available.

- We recommend that you print on a disc* before you record anything on it. Printing on a disc that already has data recorded on it can cause the data to become corrupted.
 - Note that CASIO COMPUTER CO., LTD. shall not be held liable for any loss or corruption of data on discs arising through the use of this printer.
- * CD-R, CD-RW, DVD-R, etc.

RJA514734-8

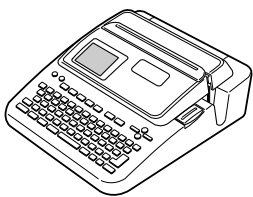
MO0412-A Printed in China

- Microsoft, Windows and Windows NT are registered trademarks or trademarks of Microsoft Corporation in the United States and other countries.
- Pentium is a registered trademark of Intel Corporation in the United States.
- Macintosh, Mac OS and TrueType are registered trademarks of Apple Computer, Inc. in the United States and other countries.
- Other company and product names used herein may also be company and product names of others.

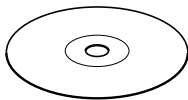
Unpacking

Check to make sure all of the following items are included.

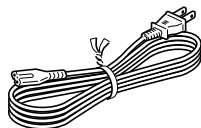
CW-L300 Printer



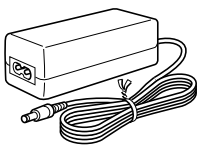
Application CD-ROM
DISC TITLE PRINTER
LABEL-BIZ SOFTWARE



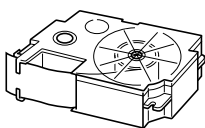
Power cord



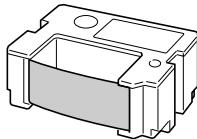
AC adaptor



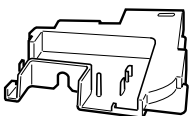
Tape cartridge



Ink ribbon cassette



Ink ribbon cassette adaptor



USB cable



Before using the CW-L300 for the first time...

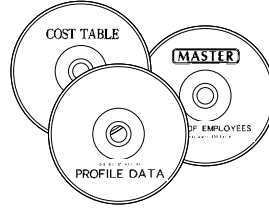
CW-L300 Printer

You can use the CW-L300 either to print directly onto discs, or to print paste-on tape labels.

■ Using the CW-L300 in a standalone configuration

The following standalone operations do not require installation of software or connection to a computer.

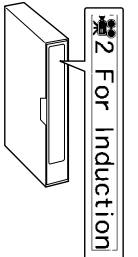
- Take the CW-L300 along anywhere for easy on-the-spot label printing.
- Print directly onto discs.
- Print tape labels you can affix to disc cases.
- Print tape labels for other applications.



Disc printing



Disc case label printing

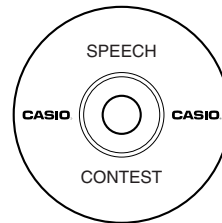


General label printing

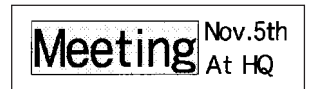
■ Using the CW-L300 connected to a computer

The following operations require installation of software and a printer driver on your computer, and connection of the CW-L300 to the computer.

- Layout labels as you view the results on your computer screen, and then print on the CW-L300.
- Print directly onto discs.
- Print tape labels for other applications.



Disc printing



General label printing

Getting Ready

Perform the following preparatory steps before using the CW-L300.

Initialize CW-L300 memory.

See "Initializing Printer Memory" on page 8 of the Startup Guide.

- When printing a disc label

- When printing a general tape label
- When printing a disc case label

Load an ink ribbon cassette.

See "Loading and Removing an Ink Ribbon Cassette" on page 11 of the Startup Guide.

Load a tape cartridge into the CW-L300.

See "Loading and Removing a Tape Cartridge" on page 13 of the Startup Guide.

Preparation is complete!

- For information about producing a test print, see "DISC Mode" (page 18) and "TAPE Mode" (page 23) under "Label Printing Basics" in the Startup Guide.
- Regardless of whether you are using the CW-L300 in a standalone configuration or connected to a computer, you need to layout a label before you can print it.
- The procedure in the next section is to view the applicable user documentation for the type of label you want to layout and print.

User Documentation

The CW-L300 comes with the four types of user documentation described below.

■ Printed Documentation

- ① CW-L300 Startup Guide
- ② CW-L300 User's Guide

■ PDF File Documentation (CD-ROM)

- ③ DISC TITLE PRINTER Application User's Guide
- ④ FA-B30 Basic Label Printing Software User's Guide

The following table shows which documentation you need to check for each type of printing operation.

When you want to do this:	See this user documentation:
<ul style="list-style-type: none">• Print a tape label or disc label without connecting to a computer• Print a disc case label	①, ②
<ul style="list-style-type: none">• Connect to a computer and print a disc label	①, ②, ③
<ul style="list-style-type: none">• Connect to a computer and print a tape label	①, ②, ④

- All of the remaining procedures of this manual assume that the CW-L300 is connected to your computer. See the Startup Guide for information about using the CW-L300 in a standalone configuration.

About the Bundled CD-ROM

Handling Precautions

- When handling the disc, avoid getting finger smudges, dirt, scratches, etc. on either of its surfaces.
- Should the disc become dirty, use an eyeglass cleaning cloth or some other soft cloth to wipe it lightly from the center of the disc outwards towards its edge. Never use phonograph record cleaner or any other cleaning agent.
- Never write on either of the disc's surfaces with a pen or pencil, or affix a sticker to the disc surfaces.
- Use of a disc that is cracked or deformed, or a disc that has adhesive on it is dangerous. Never use such a disc.

Storage Precautions

- Avoid storing discs in areas subjected to high temperature, high humidity, or direct sunlight.
- When you are not using a disc, store it in its original case or in a commercially available CD case.
- Avoid storing a disc so its label comes in direct contact with the surface of a vinyl case, bag, etc.

Warning!

Never play a CD-ROM disc on any device that is not specifically designed to play back CD-ROM discs. Audio output at a high volume setting creates the risk of damaged hearing and damage to audio speakers.

Minimum System Requirements

OS: Microsoft® Windows® XP, 2000 Professional, Me, 98SE, or 98 (English/French/German/Italian/Spanish Version)

Computer: IBM PC/AT with the following specifications.

- Windows XP, 2000 Professional, Me, 98SE, or 98 pre-installed
- Pentium®II 266MHz or higher CPU or CPU recommended for running the OS you are using.
- USB port

Memory: 64MB minimum (128MB minimum recommended)

Hard disk: At least 40MB available for installation of these applications, at least 60MB available for running the applications.

Display: Color display (256 colors minimum, Full-Color recommended), compatible with Windows XP, 2000 Professional, Me, 98SE, or 98, and capable of being connected to your computer.
Resolution: 800 x 600 or higher

Pointing device: Mouse or other equivalent device compatible with Windows XP, 2000 Professional, Me, 98SE, or 98

Keyboard

CD drive

- The applications may not run correctly on certain system hardware and software configurations.
- Operation under Windows 3.1, 95, and NT®, on a Macintosh®, and under Mac® OS is not supported.
- Operation of the applications are not guaranteed on a computer upgraded to XP, 2000 Professional, Me, 98SE, or 98.

Installing the Software

This document explains how to install the bundled software on a computer running the English version of Windows XP. For details about basic Windows operations, see the user documentation or help for your computer.

Precautions when Installing and Uninstalling

- You need to be logged in to your computer with as an administrator (Windows XP) or with administrator privileges (Windows 2000) in order to install or uninstall the software.

Software and User Documentation

Printing Software

- DISC TITLE PRINTER Application
- FA-B30 Basic Label Printing Software

User Documentation (PDF Files)

- DISC TITLE PRINTER Application User's Guide
- FA-B30 Basic Label Printing Software User's Guide

Adobe Reader

To Install Software

Important!

- Be sure to install the software before you connect the printer to your computer. Connecting before you install the software can result in improper operation.
- Make sure you quit all other anti-virus and other applications running on your computer before starting installation. Installing while other applications are running can result in incorrect installation. You can restart the applications after installation is complete.
- If you leave an anti-virus application running, it may display error and warning message during the installation procedure. If this happens, perform the following steps.

1. After installation is complete, uninstall the software you just installed.
2. Exit the anti-virus application and any other applications currently running on your computer.
3. Re-install the software.
4. After installation is complete, re-start the applications you exited in step 2.

■ To install the printing software

The examples in this manual show installation from a CD-ROM drive named drive D:

1. Start up Windows, and place the **DISC TITLE PRINTER LABEL-BIZ SOFTWARE** CD-ROM into your computer's CD-ROM drive.

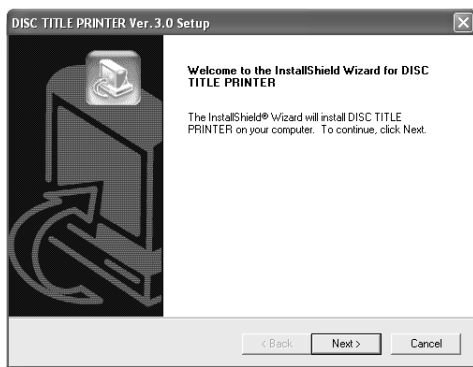
The installer should start up automatically, and display the screen shown below.



If the installer does not start up automatically

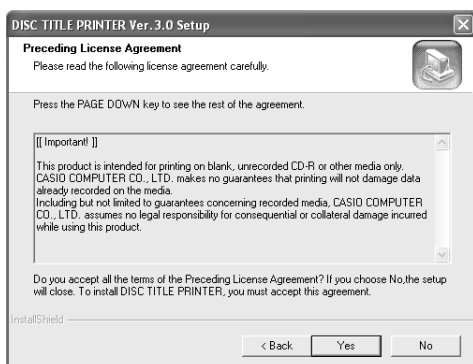
- ① On the Windows **Start** menu, click **Run**.
 - ② Type **D:\Setup.exe**. Be sure to change the "D" to the actual name of your computer's CD drive. See the user documentation that comes with your computer for information about the name of its CD drive.
 - ③ Click **OK**.
This starts the installer on the CD-ROM.
- If you want to cancel installation, click the **Cancel** button on each of the installer screens.
 - If you want to install the DISC TITLE PRINTER Application only, click **Cancel** for installation of the FA-B30 software.
 - If you want to install the FA-B30 software only, click **Cancel** for installation of the DISC TITLE PRINTER Application. This will start installation of the FA-B30 software.

2. Select the language of the version you want to install, and then click **OK**.



3. Click **Next**.

This displays the “Preceding License Agreement”. Be sure to read the “Preceding License Agreement”.



4. After reading the agreement, click **Yes**.

This displays the “Software End User License Agreement”. Be sure to read the “Software End User License Agreement”.

5. After reading the agreement, click **Yes**.

This displays the **Choose Destination Location** screen.

6. Check the install destination location, and then click **Next**.

- If you want to change the installation location, click **Browse**.
- Clicking **Next** starts installation.

7. The **InstallShield Wizard Complete** screen will appear after installation is complete. Click **Finish**.

This will advance automatically to installation of FA-B30 Software.

8. The installer will start up automatically, and display the screen shown below. Click **Next**.



9. This displays the “Software End User License Agreement”. After reading the agreement, click **Yes**.

- Be sure to read the “Software End User License Agreement”. Clicking **Yes** will display the **Choose Destination Location** screen.

10. Check the install destination location, and then click **Next**.

- If you want to change the installation location, click **Browse**.
- Clicking **Next** displays the **Option Selection** screen.

11. Select the options you want, and then click **Next**.

- Clear the check box of any option you want to deselect.
 - The information presented in this manual assumes that the check boxes of all the options are selected.
- This displays the **Printer Selection** screen.

12. After confirming that **CW-L300** is selected, click **Next**.

This displays the **Select Program Folder** screen.

13. Normally, you should just click **Next** without changing anything.

This displays the **Start Copying Files** screen.

14. Normally, you should just click **Next** without changing anything.

The **InstallShield Wizard Complete** screen will appear after installation is complete.

15. Click **Finish**.

Check to make sure that everything was installed correctly.

- **DISC TITLE PRINTER Application:** If you installed this application following the above steps, there should be a **DISC TITLE PRINTER** shortcut icon on your Windows desktop.
- **FA-B30 Software:** If you installed this application following the above steps, there should be a **Basic Label Printing Software FA-B30** shortcut icon on your Windows desktop. If you disabled display of shortcut icons on the **Option Selection** screen, you will need to navigate to the location where you installed the software to see if they are present.

Installing Adobe Reader

Your computer must have Adobe Reader or Acrobat Reader 4.0 or higher installed in order to view the PDF file user documentation for the DISC TITLE PRINTER or FA-B30 Software. If your computer does not have one of these readers installed, perform the following procedure to install Adobe Reader 6.0 from the CD-ROM.

■ To install Adobe Reader

1. Place the CD-ROM that comes with the printer into the CD driver of your computer.
2. When the installer screen for the printing software appears, click **Cancel** to cancel it.
3. Navigate to the **Adobe Reader** folder on the CD-ROM, where you will find folders whose names indicate the language version: English, French, German, Italian, Spanish. Open the folder whose language matches that of your computer operating system. In the folder, open the file named **Readme_casio**, and carefully read its contents. After you are finished, close the **Readme_casio** file. Be sure to read the entire contents of the **Readme_casio** file.
4. Inside the folder where the **Readme_casio** is located, double-click the file named **AbdeRdr60_xxx_full.exe**.
 - The “xxx” portion of the file name will be a three-letter code indicating the language of the file contents.Double-clicking the file will start installation of Adobe Reader. Follow the instructions that appear on your computer screen to complete installation.

To Read the Contents of a Manual in a PDF file

1. Place the CD-ROM that comes with the printer into the CD drive of your computer.
2. When the installer screen for the printing software appears, click **Cancel** to cancel it.
3. Navigate to the **User's Guide** folder on the CD-ROM, where you will find folders whose names indicate the language version: English, French, German, Italian, Spanish. Open the folder whose language matches that of your computer operating system. Depending on the documentation you want to view, double-click the PDF file in the folder you opened to view its contents.
 - The examples in the User's Guide use the contents of the English-language documentation.

To Uninstall Printing Software

1. Click the Windows **Start** button, and then click **Control Panel**.
2. Double click the **Add or Remove Programs** icon.

This causes the **Add or Remove Programs** dialog box to appear.
3. In the list of installed software, click **DISC TITLE PRINTER** or **Basic Label Printing Software FA-B30** to select it.
4. Click the **Change/Remove** button.
5. On the file delete confirmation dialog box that appears, perform one of the following operations.

If you selected DISC TITLE PRINTER Application in step 3, click **Yes** to uninstall it. If you selected FA-B30 Software in step 3, click **OK** to uninstall it.

Note

 - Some files may cause a separate confirmation dialog box to appear before they can be deleted. If you are unsure about whether you should keep a file, select **No**.
6. On the dialog box that appears, perform one of the following operations.

If you selected DISC TITLE PRINTER Application in step 3, click **OK**. If you selected FA-B30 Software in step 3, click **Finish**. This completes the printing software uninstall operation.

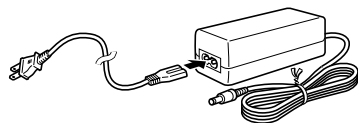
Connecting to your Computer

Important!

- Perform the following procedures only after you have installed the software on your computer.
- Use only the USB cable that comes bundled with the printer.

To Connect to Your Computer

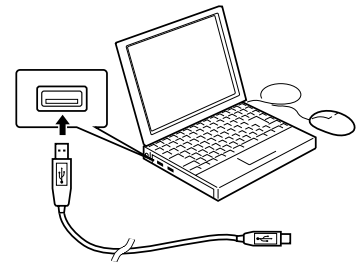
1. Connect the power cord to the AC adaptor.



2. Connect the USB cable to the USB port of your computer.

Important!

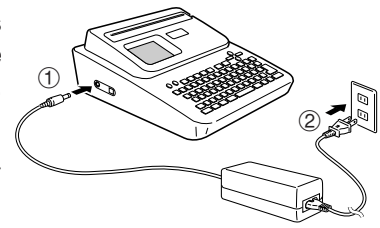
- Be sure you connect directly to the USB port of the computer. Connecting through a hub or chaining through another USB device may cause misoperation.
- The first time you connect the USB cable, you have to remove the sticker covering the printer's USB port.



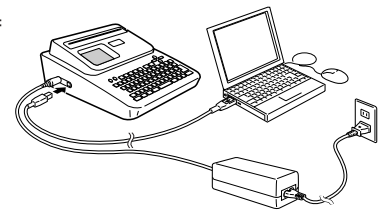
3. Plug the AC adaptor plug into the printer's AC adapter terminal (①), and then plug the power cord into a household power outlet (②).

Important!

- Use only the AC adaptor that comes bundled with the printer.



4. Connect the USB cable to the USB port of the printer.



Installing the USB Driver

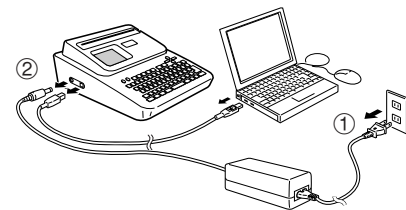
After installing the bundled software, connect the CW-L300 to your computer, and then press the **COMPUTER LINK** button. This will start the USB driver installation wizard. Follow the instructions that appear on the display to install the USB driver.

- If you are running Windows XP, the message shown nearby will appear during USB driver installation. When it does, click **Continue** to proceed with the installation.
- If you are running Windows 2000, the "Digital Signature Not Found" error message may appear during USB driver installation. If it does, click **Yes** to proceed with the installation.
- The above messages do not appear on a system running Windows ME, 98SE, or 98.



Disconnecting from a Computer

1. Unplug the USB cable from the computer and printer.
2. Unplug the power cord from the wall outlet (①), and then unplug the AC adaptor from the printer (②).



Important!

- Never disconnect the AC adaptor, power cord, or USB cable while a print operation is in progress. Doing so creates the risk of printer malfunction.