

CASIO®

EN

App for a Smartphone or Tablet Terminal

EXILIM Link

User's Guide

- The procedures in this manual are performed using a typical smartphone/tablet. Certain details (display contents, etc.) may differ on the device you are actually using.
- Keep the User's Guide in a safe place for future reference.

EXILIM

Read this first!

- The contents of this manual are subject to change without notice.
- The contents of this manual have been checked at each step of the production process. Feel free to contact us if you notice anything that is questionable, erroneous, etc.
- Any copying of the contents of this User's Guide, either in part or its entirety, is forbidden. Except for your own personal use, any other use of the contents of this manual without the permission of CASIO COMPUTER CO., LTD. is forbidden under copyright laws.
- CASIO COMPUTER CO., LTD. shall not be held liable for any damages or lost profits suffered by you or any third party due to the use of this application software.
- CASIO COMPUTER CO., LTD. shall not be held liable for any damages or lost profits caused by loss of memory contents due to malfunction, repair, or any other reason.
- Note that the example screens and product illustrations shown in this User's Guide may differ somewhat from the screens and configuration of the actual camera.


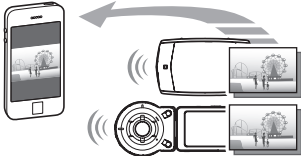
Contents

Read this first!	2
What you can do with EXILIM Link	4
Getting Ready to Establish a Connection between a Smartphone and Your Camera	5
■ Installing the EXILIM Link App on Your Smartphone	5
■ Establishing a Wireless Connection for the First Time	6
Change camera's SSID and password before using wireless LAN	7
Using a Smartphone as a Camera Remote Controller . (Remote Capture) . . .	8
Sending a Snapshot or Movie File from Camera Memory to a Smartphone . . .	9
Viewing Images or Sharing Images on a Social Network Service	10
Trouble shooting	11
Copyrights	12

What you can do with EXILIM Link

Installing EXILIM Link on your smartphone and then establishing a connection with your camera enables the functions described below.

For details about how to install EXILIM Link, see the user documentation that comes with your digital camera.

With this function:	You can do this:	See page:
<p>Remote Capture (Certain camera models)</p> 	<p>Remotely control and shoot with the camera using a smartphone.</p>	<p>8</p>
<p>Send to phone</p> 	<p>You can select one more snapshot and/or movie file in camera memory and send a copy to a smartphone.</p>	<p>9</p>

IMPORTANT!

- Never use wireless LAN functions inside an aircraft or anywhere else where such operation is restricted.
- Some smartphone models may not be able to play back movie files from your camera.
- Depending on your smartphone model, its operating system version, and/or its remaining storage capacity can cause failure of a movie or snapshot save operation. Receiving a camera file, perform the required operation on your phone to check if the file was stored properly.
- Viewing a movie received on an Android terminal:
Note that movies are not displayed by Gallery. Movies are stored in a folder named "EXILIM Link". A separate movie player is required to playback movies (whose files have the file name extension MOV). Depending on your movie player, you may not be able to playback movies and/or audio.
- Images recorded with another company's camera cannot be received by a phone using this app.
- Attempting to use a memory card that includes a wireless function with your camera can cause abnormal operation.

NOTE

- Note that using wireless LAN functions requires more battery power usage than normal. Make sure that the camera battery is sufficiently charged before starting a wireless LAN operation.
- The operating range depends on the local communication environment and on the type of smartphone you are connected to.

Getting Ready to Establish a Connection between a Smartphone and Your Camera

Installing EXILIM Link on a smartphone enables remote control of the camera from your phone. You can also receive images recorded with the camera. Search the EXILIM Link app on Google Play or App Store and install it on your smartphone.

■ App operation guarantees

No guarantees are made concerning the ability to operate the EXILIM Link app on any particular smartphone or tablet.



IMPORTANT!

- For information about operating system version supported by the app, check the information on Google Play or the App Store.
- App functions and the required operating environment are subject to change without notice.

Installing the EXILIM Link App on Your Smartphone

■ Android terminal

1. Open “Google Play”.
2. In the search field, type “EXILIM Link”.
3. Install EXILIM Link.

■ iPhone (iOS)

1. Open “App Store”.
2. In the search field, type “EXILIM Link”.
3. Install EXILIM Link.

Establishing a Wireless Connection for the First Time

The first time you establish a wireless LAN connection between a smartphone and your camera, you will need to configure your phone's wireless LAN settings, and input the camera's SSID and password. For information about how to do this, refer to your camera's user documentation. Once you configure wireless LAN settings, you will not need to configure them again.

- What you need to do to establish a wireless LAN connection depends on the type of smartphone you are using. For details about how to establish a wireless LAN connection see the user documentation that comes with your smartphone.

■ What to do if you are unable to establish a wireless LAN connection between the camera and a smartphone.

This problem may be caused when the smartphone is already wirelessly connected to one of the networks or devices below. Go to your smartphone's Wi-Fi settings and select your camera's SSID.

- Household wireless LAN
- Public wireless LAN
- Portable wireless LAN device



IMPORTANT!

- Note that the wireless LAN connection between the camera and smartphone is maintained even while the EXILIM Link app is not running on the smartphone or when the app is running in the background. Leaving a wireless LAN connection in effect will shorten camera battery life and cause the camera to become warm. Shut down the EXILIM Link app and turn off the camera to terminate the wireless LAN connection whenever you are not using it.

Change camera's SSID and password before using wireless LAN

With some camera models, you will need to configure your phone's wireless LAN settings, and change the camera's SSID and password the first time you establish a wireless LAN connection with a smartphone. Certain camera models have the same SSID and password when they are shipped from the factory. If you use multiple cameras in the same area without changing their SSIDs and passwords, there is the chance of connection with the wrong phone and unauthorized access to your personal information (images, etc.)

1. Enable the camera's wireless function.

See your camera user documentation for information about what you need to do to enable wireless.

This will enable connection with a smartphone.

2. On your smartphone, start up the EXILIM Link app.

3. On the smartphone, tap "Connection starting".

This will connect the smartphone to the camera.

- If this is the first time you started up the app, its terms of use will appear on your smartphone. Read the terms and then tap "Agree".

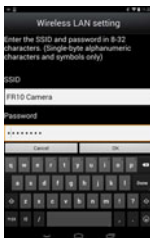
4. Tap "📷".

5. Enter the new SSID and password.

- For the SSID and password, enter from eight to 32 single-byte characters and symbols.

6. Tap "OK".

The new SSID and password will become effective the next time you turn on the camera.



NOTE

- Note that after changing the SSID and password on the camera, you will also need to change the Wi-Fi settings of the smartphone.

Using a Smartphone as a Camera Remote Controller (Remote Capture)

With some camera models, you can remotely control snapshot and movie recording from a smartphone. You also can perform remote zoom, self-timer, and other operations as well.

1. Enable the camera's wireless function.

See your camera user documentation for information about what you need to do to enable wireless.

2. On your smartphone, start up the EXILIM Link app.

3. On the smartphone, tap "Connection starting".

This will connect the smartphone to the camera.

- If this is the first time you started up the app, its terms of use will appear on the smartphone screen. Read the terms and then tap "Agree".

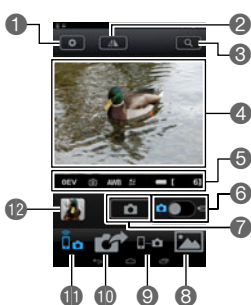
4. On the smartphone, tap "📷".

5. Compose the image on your smartphone's screen as you shoot.

- After you are finished using Remote Capture exit the app on your smartphone.

■ Controlling Your Camera with a Smartphone

During Remote Capture shooting, you can use the EXILIM Link app to control the camera from a smartphone. Some screen contents produced by your phone and required operations depend on your smartphone model, and so may be different from those presented in this manual.



- 1 Configures REC settings.
- 2 Flips the screen image horizontally.
- 3 Performs a zoom operation.
- 4 Displays what is being picked up by the camera's lens.
- 5 Displays current settings.
- 6 Toggles between snapshot and movie shooting.
- 7 Shoots an image.
- 8 Tap to view images copied to the smartphone or to share images on a social network service (page 10).
- 9 Tap to change the camera's SSID and password from the smartphone (page 7).
- 10 Tap to have an image shot by the camera sent to the smartphone (page 9).
- 11 Tap to enable remote control of the camera from the smartphone (page 8).
- 12 Shows the image that was just shot.

NOTE

- Images shot with Remote Capture can also be stored on the smartphone at the time when the image is shot. To do so, tap **1**, select “Synchronous Save”, and then select “On”.

Sending a Snapshot or Movie File from Camera Memory to a Smartphone

You can select one or more snapshot and/or movie file in camera memory and send it to a smartphone. You can select up to 99 files, totaling no more than 1500MB for a single send.

1. Enable the camera’s wireless function.

See your camera user documentation for information about what you need to do to enable wireless.

2. On your smartphone, start up the EXILIM Link app.

3. On the smartphone, tap “Connection starting”.


This will connect the smartphone to the camera. The smartphone display shows a list of images stored in camera memory.

- If this is the first time you started up the app, its terms of use will appear on the smartphone screen. Read the terms and then tap “Agree”.

4. On the smartphone, tap “”.

5. Tap the images of the files you want to have sent to the smartphone.

6. After selecting the images of all of the files you want to send to the smartphone, touch “”.

This will send the images you selected to the smartphone. You can view the sent images with “” (page 10).

IMPORTANT!

- Some smartphone models may not be able to play back movie files.
- Depending on your smartphone model, its operating system version, and/or its remaining storage capacity can cause failure of a movie or snapshot save operation. After send operation, perform the required operation on your smartphone to ensure that the movie or snapshot was saved properly.
- Viewing a movie received on an Android terminal:
Note that movies are not displayed by Gallery. Movies are stored in a folder named “EXILIM Link”. A separate movie player is required to playback movies (whose files have the file name extension MOV). Depending on your movie player, you may not be able to playback movies and/or audio.

NOTE

- You can use the smartphone apps below to view snapshots after sending them.
 - iPhone: Camera Roll
 - Android terminal: Gallery or another photo browser app
- In the case of an iPhone, sent snapshots cannot be deleted with the EXILIM Link app. To delete an image, use Camera Roll.
- With some camera models, you can specify the size of snapshots sent to the smartphone using the camera's "Resize before send" feature.

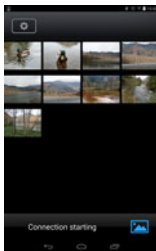
Viewing Images or Sharing Images on a Social Network Service

You can use the procedure below to view past images copied to the smartphone using EXILIM Link, without connecting the camera and phone.


1. On your smartphone, start up EXILIM Link.

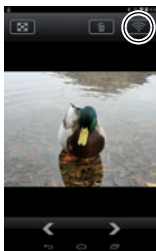
2. Tap ".

This displays a menu of images.



3. Tap the image you want to view. This will display an enlarged view of the image.

You can share an image on a social network service by tapping ".



Trouble shooting

The camera won't send movies.

- EXILIM Link has a maximum file size limitation when sending files. Movie files that are 1500MB or greater in size cannot be sent.

The camera cannot connect with a smartphone.

- If the smartphone or other device has a Wi-Fi connection auto switching function (auto network switching), the function may be affecting the connection with the camera. Disable Wi-Fi connection auto switching (network auto switching) by clearing the setting's check box, etc.
- Delete the camera SSID from the smartphone Wi-Fi settings, and then re-input it along with the required password.

A movie sent to a smartphone cannot be viewed. I don't know where the movie file is stored.

- An Android terminal does not display movies in the Gallery, but movies are stored in the EXILIM Link folder. To play back a movie, you need to install a separate movie player app (that supports playback of MOV files) on your terminal. Depending on your movie player, you may not be able to play back a movie or its audio.

Copyrights

Except for your own personal enjoyment, unauthorized use of snapshots or movies of images whose rights belong to others, without the permission of the right holder, is forbidden by copyright laws. In some cases, shooting of public performances, shows, exhibitions, etc. may be restricted entirely, even if it is for your own personal enjoyment. Regardless of whether such files are purchased by you or obtained for free, posting them on a website, a file sharing site, or any other Internet site, or otherwise distributing them to third parties without the permission of the copyright holder is strictly prohibited by copyright laws and international treaties. For example, uploading or distributing on the Internet images of TV programs, live concerts, music videos, etc. that were photographed or recorded by you may infringe upon the rights of others. Note that CASIO COMPUTER CO., LTD. shall not be held liable for use of a camera in any way that infringes on the copyrights of others or that violates copyright laws.

The following terms, which are used in this manual, are registered trademarks or trademarks of their respective owners.

Note that trademark [™] and registered trademark [®] are not used within the text of this manual.

- iPhone is a trademark of Apple Inc.
- Android and Google Play are trademarks or registered trademarks of Google Inc.
- App Store is a service mark of Apple Inc.
- iOS is a trademark or registered trademark of Cisco Systems, Inc. of the United States.
- Wi-Fi is a registered trademark of the Wi-Fi Alliance.
- EXILIM and EXILIM Link are registered trademarks or trademarks of CASIO COMPUTER CO., LTD.
- All other company or product names mentioned herein are registered trademarks or trademarks of their respective companies.

Any and all unauthorized copying, distribution, and transfer for commercial purposes of the software provided by CASIO are prohibited.

CASIO®

CASIO COMPUTER CO., LTD.
6-2, Hon-machi 1-chome
Shibuya-ku, Tokyo 151-8543, Japan